

CATTLEMEN'S
BALL

JUNE 2

20
07

SANDPOINT
CATTLE CO.

LODGEPOLE, NE

Power of the Point



BEEF. RURAL LIFE. RESEARCH.

Cattlemen's Ball



Cattlemen's Ball Mission Statement

The Cattlemen's Ball of Nebraska, Inc. is established to promote beef in a healthy diet, to showcase rural Nebraska and to raise money for health care research.



7 Six-foot Painted Fiberglass Boots

Six artists from Nebraska and one from Texas have painted the fantastic boots to be auctioned at all the auctions—2 at the Friday Night Reception, 2 at the Saturday Brunch, and 3 on the Saturday Evening Auction. The boots were made by Fiberglass Animals of Shelton, NE.

These boots are 'one of a kind' works of art that can be places outside or inside your home or business. Make sure you check out these exceptional pieces of art that are on display around the grounds.

20
Cattlemen's Ball
07

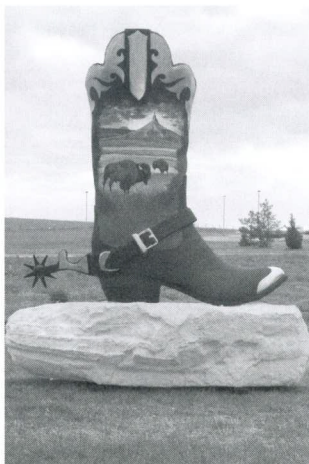
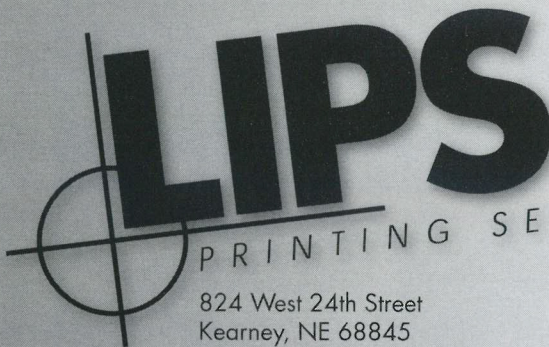


Table of Contents


Host Family Welcome.....	2-3	Silent Auction	20-24
Chairmen Welcome.....	4	Working Cow Horse Event.....	25
Committee Chairmen	5	Trail Boss Brunch Auction.....	26
Ricketts Family Ad	6	Trail Boss Brunch	27
Greetings from Advisory Board.....	7	Afternoon Activities	28-29
Mayors' Welcomings	8	Ball General Store	30
Information /Concessions	9	Vendor Store	31
Message from Eppley Cancer Center	10	Heifer Calf Pregnancy Auction	32
NE Beef Ad	11	Style Show	33
Golf Tournament	12	In-kind Donors	34-37
Pickup/ Tractor Raffle	12	Evening Menu and Program.....	38
Cabela's Ad	13	Evening Auction	39-41
Trail Boss Reception Auction.....	14	About Jo Dee Messina	42
Trail Boss Appreciation Ad	15	About High Horses.....	43
Underwriting Donations.....	16-18	2008 Cattlemen's Ball Information.....	43
Hero's Memorial Wall	18	Map Legend.....	44
Trail Boss Champagne Social	19	Map of Grounds.....	Inside Back Cover
Art Show	19	Schedule of Events.....	Back Cover



LIPS
PRINTING SERVICE

824 West 24th Street
Kearney, NE 68845

800.498.9580 (in-state)
308.234.2319 (phone)



Proud to be the **DESIGNER & PRINTER** of the **2007 CATTLEMEN'S BALL**

KEARNEY, NE • WWW.LIPSPRINTZONE.COM

Welcome to the 2007 Cattlemen's Ball

We would like to welcome everyone to the 2007 Cattlemen's Ball of Nebraska. The Ball returns to Western Nebraska for the first time in several years. We are excited to offer our guests an authentic western ranch environment, quality entertainment and numerous activities all while helping to provide funding for the UNMC Eppley Cancer Center continue the fight against cancer.

The SandPoint Cattle Company, LLC along with Ray & Mary Alger and John & Laurie Widdowson have been gracious enough to host this year's event. They have truly provided a first class environment for the ball this year, employing their financial resources as well as the countless hours of work that John and Laurie have contributed. The quality and detail that they have strived to achieve for this event is demonstrative of the day to day operations at SandPoint Cattle Company.

Cheyenne and Deuel County residents have pulled together offering tremendous support to this year's event. The success of this year's event can only be attributed to the volunteerism of nearly 600 caring individuals, the in-kind donations by several business and non profit organizations and unprecedented financial support derived from numerous individuals and entities. Within our counties we are truly blessed, we have a thriving agriculture market; incredible employment growth spearhead by Cabela's our area's largest employer and the philanthropic nature of the Thomas Buckley Trust. We welcome you into our community and hope you enjoy your time here.

We would like to thank our 32 committee chairs and the volunteers that they have recruited; YOU are the reason why the Cattlemen's Ball is a success. We cannot express how grateful we are that you have helped us with this event, you are very much appreciated, THANK YOU!

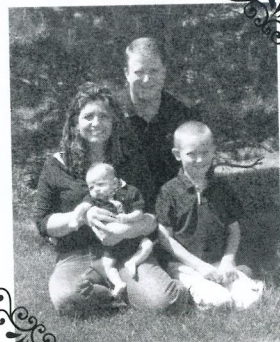
Mike Behrends

Mike Behrends
General Chairman



Matt Monheiser

Matt Monheiser
General Chairman



20
Cattlemen's Ball
07

2007 Committee Chairmen

Thank you to these spectacular Committee Chairmen of the 2007 Power of the Point Cattlemen's Ball! The effort and commitment that they have shown to this cause has been incredible and it is evident in what you all see today. We could not have done this without all of you, your co-chairs, volunteers, friends, and family! We thank you!

Co- Chairman	Mike Behrends & Matt Monheiser
Treasurer	Corrine Fischer
Tickets	Mark Empson
Grounds	Gary Dible
Underwriting	Chris & Flo Ray
Secretary	Laurie Widdowson
Publicity	Suzy Ernest & Jeff Campbell
Evening Meal	Diane Kucera
Raffle	Jason Zoellner
Decorations	Cindy Williams
Wine - Beef - County	Mary Bond
Casino	David McCarville
Concessions	Ronda Mitchell
Bar	Joel Nienheuser
Trail Boss Social Hour	Amy Jay
Trail Boss Brunch	Leslie Cook
Art Show	DeAnna Volkmer & Judy McElroy
Activities	Marty McMillen
Golf Tournament	Tom Kruger & Tim Miller
Live Auction	Larry & Lisa Reiser
Silent Auction	Dan & Linda Markel
General Store	Dawn Batt
Beef Display	Travis Wenzel
Program Book & Printing	LIPS Printing Service, Kearney, NE
Safety/Security	Jeff Ortgies



BACK ROW: Jason Zoellner, Larry Reiser, Dan Markel, Gary Dible, Joel Nienheuser, Amy Jay, Suzy Ernest, Jeff Campbell, Mary Bond, Tim Miller, Tom Krueger

FRONT ROW: Mark Empson, Florence Ray, Chris Ray, Lisa Reiser, Leslie Cook, Linda Markel, Cindy Williams, Dawn Batt, Corrine Fischer, Judy McElroy, Ronda Mitchell, Diane Kucera, Travis Wenzel

NOT PICTURED: Marty McMillen, Deanna Volkmer, David McCarville, Tory Duncan, Jeff Ortgies

Welcome



THE RICKETTS FAMILY
IS PROUD TO BE A
DIAMOND TRIAL BOSS SPONSOR
FOR THE 2007 CATTLEMEN'S BALL
AND IS COMMITTED TO
HELPING FIND A CURE FOR CANCER
WITH THE HELP OF THE
EPPLEY CANCER RESEARCH CENTER.



20
Cattlemen's Ball
07

Greetings and welcome to the 9th Annual Cattlemen's Ball of Nebraska! On behalf of the Cattlemen's Ball of Nebraska Advisory Board, I'd like to thank you for attending today's event in the beautiful Panhandle of Nebraska!

It is the mission of the Advisory Board to promote beef in a healthy diet, showcase rural Nebraska, and to raise money for health care research. We are so proud of our local partners over the past eight years who have led the charge to raise nearly \$2,000,000 for the University of Nebraska Medical Center/Eppley Cancer Center. And just as important is the 10% of the proceeds raised each year that are donated to local health agencies as selected by the local Ball Committee.

A huge thank you must go to the Sandpoint Cattle Company for hosting the 2008 Cattlemen's Ball of Nebraska! John and Laurie Widdowson and Ray and Mary Alger have brought to life the "Power of the Point. Beef. Rural Life. Research." the theme for this years fund-raising event!

The impetuses to making this event possible are Mike Behrends and Matt Monheiser. As general Co-Chairmen, Mike and Matt have led numerous volunteers through months of planning and hard work to make this occasion a reality. Without the efforts of the volunteers this showcase of what Nebraska can be proud of could not be achieved.

Last but not least are the donors who have helped to make today possible. The businesses and individuals who have given of their time and money are an integral part to the success of the Cattlemen's Ball of Nebraska. Thank you for your donations to this worthwhile cause.

We hope that you enjoy your day here in the great state of Nebraska and we look forward to seeing you again next year on June 7, 2008 at Niewohner Cattle Company in Albion for the 2008 Cattlemen's Ball of Nebraska!



Ann Marie Bosshamer, Chairman
Cattlemen's Ball of Nebraska Advisory Board

Cattlemen's Ball of Nebraska Advisory Board

Ann Marie Bosshamer • Holly Schroeder • Darreld Saltzman • Shari Flaming • Lynn Timmerman •
Kae Pavlik • Deb Hansen • Wade Horton • Ivan Rush • Bill Pullen • Alan Svajgr • Jim Gardner •
Sheryl Graff • Barbara Rishel • Barbara Martinson • Ann K. Bruntz

Mayors' Welcomings

FROM THE VILLAGE OF LODGEPOLE

Mayor, Dianne L. Borm



"As a representative for the members of the Village Board of Trustees and all of the residents of the Lodgepole community, we welcome everyone to the Annual Nebraska Cattlemen's Ball.

We are honored that we in the panhandle can be part of this event that is for a cause so important to all of us."

FROM THE CITY OF CHAPPELL

Mayor, Larry Rahe



"On behalf of the city council and all the residents of Chappell, we are proud to welcome you to the 2007 Nebraska Cattlemen's Ball. It is an honor to be part of this event for such a worthy cause. We are proud of our area and we welcome you to beautiful Western Nebraska."

FROM THE CITY OF SIDNEY

Mayor, Dr. Wendall Gaston



"I want to welcome everyone to this special event. The Cattleman's Ball is not only a fun event but it is an event that shows the giving hearts of Nebraska's people. While you are out west please take the time to visit with the friendly people of Western Nebraska. I hope you will get to enjoy several wonderful sunrises and our unbelievable sunsets. An event that will produce a memory for life and may save a life at the same time. We are glad you all have come. Enjoy."

20
Cattlemen's Ball
07

Information Page

TROLLEY TRANSPORTATION:

There are five trolley stops on the grounds. The trolleys will run continuously to help you get around the ball site and to the parking lots.

FIRST AID:

EMT's will be on site to provide care for any medical situation. They are located in the Eppley Cancer Tent between the Activities Tent and the Casino.

PAYMENT OPTIONS:

The Cattlemen's Ball will accept cash, check or credit card for purchases at the General Store, Silent Auction, and Live Auction. The Bar and Concessions are CASH ONLY. Payment options may vary by other vendors.

A treasurer is located at the Calving Barn if you need to get cash on your credit card.

CHIPS:

Casino chips are only good in Casino this year.

CONCESSIONS:

The stand will open at 11:00 AM and close at 12:00 AM.

Cash will be accepted.

**BBQ SANDWICH • HOT DOGS • POTATO CHIPS •
NACHOS • COOKIES • PEPSI PRODUCTS •
BOTTLED WATER**

The Cattlemen's Ball of Nebraska, Inc and SandPoint Cattle Company, LLC assume no liability.
You are attending at your own risk.



UNMC EPPLEY Cancer Center



Part of the mission of the Eppley Cancer Center is to facilitate application of new knowledge about the etiology, diagnosis, treatment and prevention of cancer and to improve health and quality of life. For the last nine years, the Cattlemen's Ball of Nebraska has provided vital support in the battle against cancer in Nebraska.

The theme for this year's Ball, "The Power of the Point" speaks to the power of Nebraskans when they are committed to a cause, as the Cattlemen's Ball Association is to fighting cancer. This is the tenth year that the Cattlemen's Ball has supported research efforts at the Eppley Cancer Center, raising a total of over \$2 million. Last year's Cattlemen's Ball in Milford raised over \$563,000.

All of us have been touched by cancer in some way, which is what makes this event so meaningful. Nearly 9,000 Nebraskans will be diagnosed with cancer this year alone. The "Cattlemen's Cancer Research Grant" supports cutting-edge cancer research right here in Nebraska. Each and every day, scientists at the Eppley Cancer Center are waging the war on cancer, learning why this disease develops, and investigating therapies in the laboratory that can be brought to the patient's bedside to treat cancer.

Your contribution to the Cattlemen's Ball, whether through a donation of money or time, means everything to scientists fighting cancer in the laboratories and in the clinic and, most of all, to the patients waging a very personal battle. It means hope.

Thank you for your support in working toward our goal, a cancer-free Nebraska. We are grateful for the support from the Cattlemen's Ball of Nebraska.

20
Cattlemen's Ball
07

Sincerely,
Kenneth H. Cowan, M.D., Ph. D.
Eppley Professor of Oncology
Director, UNMC Eppley Cancer Center
Director, Eppley Institute for Cancer Research

COME VISIT OUR CANCER SCREENING TENT

2007 Cattlemen's Ball Golf Tournament

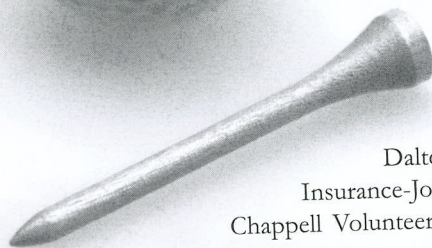
GOLF TOURNAMENT

Friday, June 1, 2007

Hillside Golf Course Sidney, NE

10 am Shot Gun start

4-person Scramble Format



Flag Prizes donated by:

McDonalds • Alltel Wireless • Wells
Fargo Bank-Lincoln • First National
Bank-Sidney • First National Bank-
Dalton • First National Insurance • State Farm

Insurance-John Eshleman • American National Bank •

Chappell Volunteer Fire Dept. • Dietrich Distributing • Chappell

Feedlot • Chappell Dental Clinic • Miller Office Products • Cheyenne

County Abstract • KSID Radio • Schering-Plough • Sandburg Implement •

Steve & Cathy Matoon • Harley and Marsha Burgmeyer • Jim & Joyce Holtmeier

2007 Cattlemen's Ball Raffle

State ID Number: 01-7793405

Drawing **SATURDAY, JUNE 2ND, 2007 • 7:00 PM**
to Benefit the UNMC/Eppley Cancer Center and the Local Community

Winning ticket holder will have their choice of...

2007 FORD F150 XLT, 4x4 Pickup, Extended Cab

Donated by Summers-Zoellner Ford



JOHN DEERE 4120 TRACTOR 400X Loader

Donated by 21st Century Equipment • Western Nebraska



Winning ticket holder must notify the Raffle Ticket committee of their choice no later than June 9, 2007.
Winner must select one of the listed choices. There is no cash buyout.

Winner will be responsible for taxes and licensing, plus provide a U.S. Government 1099 Form.

TICKET PRICE: \$100 • Winner need not be present to win

Friday Night Trail Boss Reception Auction Items

1. "Kickin' Up Your Heels" by Ron Kephart of Gering, NE 6' Fiberglass Boot

The lodgepole pine tree and cowboy dancing with his girl, shown on this boot, show the best of what the "old west has to offer". Remember those Saturdays, after a hard day on the horse, "kickin' up your heels" at the local establishment with your favorite girl? Having a good time on Saturday night was a reward for a cowboy's hard work all week. He has used the Cattlemen's "Ball" idea to incorporate music and country swing dancing on his boot. He has cut out of black metal a lodgepole pine tree, a cowgirl fiddler and a cowboy/cowgirl swing dancing that is attached to the sleeve of his boot. He is totally incorporating "lodgepole and dancing" in his theme of his boot. Donated by Ogallala Livestock.

2. Tailgate Package

Tailgating has never been easier. With the E-Z Up Shelter, Cabela's Lantern, Cabela's Deluxe Camp Chairs, Tailgator Blender, Cooler and Road Trip Grill you're sure to have the time of your life. Donated by Cabela's, World's Foremost Outfitter, Sidney, NE

3. "Life in the Fast Lane"

Framed Print by Fred Fellows

Donated by Fred Fellows

4. Cabela's Camping Package

This package is what any avid camper needs. It comes with a 6 person Alaskan Guide Tent, 0 degree sleeping bag, self inflating sleeping pads and radio pack.

Donated by Cabela's, World's Foremost Outfitter, Sidney, NE

5. "Scrappy Goose in the Pond" Quilt and Quilt Print

This quilt is 75" x 107" (full size with pillow tuck). Colors are shades of green, red and blue with a beige background. This quilt is machine pieced & machine quilted and is donated by Sharon & Mike Jessen who each have lost a parent to cancer.

Donated by Mike & Sharon Jessen, Sidney, NE

The 20 x 30 framed print by Fred Fellows depicts a young pioneer woman mending a quilt. Fred has signed this piece and is numbered.

Donated by Fred Fellows, Bigfork, MT

6. Colonoscopy

Colonoscopy (including anesthesia) at Sedgwick County Health Center. Valid through 2007.

Donated by Sedgwick County Health Center & Val Meredith, CRNA

7. Thomas D. Mangelsen Print

"Alpine Reflections" – Enjoy this signed & numbered print by Thomas D. Mangelsen. This framed limited edition print is 23" x 54" in size and would look great in your home or office.

Donated by Thomas D. Mangelsen, Omaha, NE

8. Cast & Blast

One day of guided fishing on the Platte River & your choice of one day of guided upland game hunting or duck hunting from heated blinds. Two nights lodging for four at the Crazy Rainbow Lodge. This package is fully customizable to fit your dates of travel.

Donated by Farm Credit Services of America

9. "Down in the Valley" by Gary Medley of Kearney, NE 6' Fiberglass Boot

Country farms and windmills are the theme of this Amherst, NE native. Landscapes of farms, cranes, trees and the Platte River Valley are depicted. "It's been an enjoyable experience and it's been an honor. I love doing it for that reason alone," Medley said. This boot is true Nebraska with green corn fields and blue sky. Donated by the Widdowson Family in Loving Memory of Jim & Winnie Widdowson.

#1



#4



TRAIL BOSS ★ \$600.00 (CONT.)

Steffens Home Interiors, LLC	Sidney, NE	Galen & Pam Kluck	Richland, NE
The Schoular Foundation	Omaha, NE	Pete & Suzan Kruce	Nebraska
Western Drug Co, Inc.	Sidney, NE	James G & Carole J Kontny	Julesburg, CO
Dr & Mrs J.D. Akerson	Sidney, NE	Robert & Myrna Krohn	Omaha, NE
James & Clarissa Babcock	Florissant, CO	Ray & Teri Kuehn	Sidney, NE
Don Beerman	Lincoln, NE	Ron & Nancy Kvols	Wisner, NE
Mike Behrends	Lodgepole, NE	Jim & Lou Ann McCartney	Papillion, NE
Gerald & Linda Berlage	Sidney, NE	Tom & Beverly Milligan	Hooper, NE
James Bessler	Sycamore, IL	Matt & Monica Monheiser	Sidney, NE
Tom & Leslie Biggs	Sidney, NE	Stewart & Kelly Mowery	Sidney, NE
Firth & Marilyn Booth	Lodgepole, NE	Don & Gloria Nelson	Bridgeport, NE
Brian & Ann Marie Bosshamer	Amherst, NE	Delbert & Marilee Niewohner	Albion, NE
Doug & Gail Brand	Seward, NE	Paul & Eunice O'donnell	Giltner, NE
Roger & Sharon Brandes	Central City, NE	Kae Pavlik	Yutan, NE
David & Seana Brown	Idaho Falls, ID	Shanan Plough	Wauneta, NE
Eric & Ruth Brown	Lexington, NE	Lee A Shell	Omaha, NE
David D & Ann K Bruntz	Friend, NE	Donald & Bonnie Sliffe	Papillion, NE
Jerry & Mary Carlson	Omaha, NE	Mark & Pam Spurgin	Paxton, NE
Clarence Castner	Lincoln, NE	Brad & Susan Sutton	Sidney, NE
Bill & Sandra Condon	Sterling, CO	Keith D. Swarts	Nebraska
Hal & Mary Daub	Omaha, NE	Norman & Arlene Tasler	Omaha, NE
R D & Judy Doose	Gretna, NE	Dr. J.E. & Lois Thayer	Sidney, NE
Jeff Ebberson	Coleridge, NE	Lendon & Leone Thompson	Elsie, NE
John Epp	Lincoln, NE	Benny & Patricia VonSeggern	Sidney, NE
Randy & Terri Faessler	Sidney, NE	Dean & Margaret Walker	Sidney, NE
Leslie & Beverly Farlin	Nebraska	Ron & Annette Wallman	Seward, NE
Charles & Shari Flaming	Paxton, NE	Ray & Jolene Ward	Kearney, NE
Ron & Sharon Gade	Seward, NE	Loyd and Anne Wegner	Scribner, NE
Mark & Jane Gloor	Marquette, NE	Travis & Kimberly Wenzel	Hyannis, NE
Robert & Dana Goodwin	Sidney, NE	Nicholas Wilson	Lodgepole, NE
Calvin Handley	Sidney, NE	David J Wolf	Kimball, NE
Dr & Mrs Rommie J Hughes	Scottsbluff, NE	Jay Wolf	Albion, NE
Jan & Hohn Hutson	Sidney, NE	William G Zimmerman	Pierre, SD

Hero's Memorial Wall

The 2007 Cattlemen's Ball welcomes you to add your names to this Memorial Wall that travels to a new ball site each year. Sign your name of survivorship, sign the names of loved ones in their memory, whatever tributes you would like to have passed on.

This is one big reason that a lot of us are here – to raise money for cancer research and help those battling cancer. This is a simple way for everyone in attendance to see the impact that we have.

Spend some time of reflection in our Country Church that we have set up with the Hero's Wall. This is a special place, don't miss it!

Trail Boss Champagne Social Hour

10-11 AM in Activities Tent

MENU

Champagne • Mango/OJ Mimosa's • Chocolate Macaroons • Creme Puffs • Fresh Fruit •
Tea Cake • Chocolate Fountain • Assorted Cheese Platter with Crackers

2007 Cattlemen's Ball of Nebraska Art Show

Art Show is open in the Activities Tent from 10AM - 5 PM

FINANCIAL DONORS FOR THE CATTLEMEN'S BALL ART SHOW:

Hobson Insurance Agency • The Insurance Store • State Farm Insurance/Ron Ahlschwede • Farm Bureau Insurance/Trina Stitt • New York Life Insurance Co./Marla Sprenger • Sidney Rotary Club • Chappell Rotary Club

ARTIST/LOCATION

MEDIUM

Beth Erdman, Scottsbluff	Oil, Acrylic, Pastel
Bud Watson, Torrington, WY	Oil
Carol Dunne Benson, Kimball	Jewelry
Emma Stricker, Torrington, WY	Colored Pencil
Edith Bowen, Colorado	Oil
Tim Collins, Laramie, WY	Oil, Acrylic, Watercolor
James Whartman, Hemingford	Oil
Ross Lampshire, Loveland, CO	Acrylic, Pottery, Dream Warrior
Don Holst, Chadron	Oil, Photography
Peggy Campbell, Greeley, CO	Sculptures
Judy McElroy, Gurley	Watercolor, Acrylic, Pencil
Peggy Nelson, Potter	Wheat Weaver
Mary Beth Dodson, North Platte	Oil, Acrylic, WC, Pastels, Leather Journals
Pam Brown, Akron, CO	Prints, Cards, Watercolor
Marlene Blanchard, North Platte	Mixed Media, Purses, Jewelry
Kathy Sigle, Spearfish, SD	Watercolor
Kurt Bergdolt, Lincoln	Pottery
John Thein, Omaha	Oil, Watercolor
Lori Paulsen, Lincoln	Jewelry
Tom Peacock, Berthoud	Pastels
Jenifer Jude Berge, Gering	Acrylic, Oil, Pastel
Julie Woods, Elizabeth, CO	Pastels
Cindi Egging, Gurley	
Nancy Biesemeier-Dee, Haxtun, CO	Water Color, Pastel
Casey Hunter, Yoder, WY	
Mike L. Meyer, North Platte	Leather Sculpture
Barbara Schaffner, Wheatland, WY	Oil, Watercolor, Bronze, Pastel
Julie Nighswonger, Torrington, WY	Pencil and Pottery
Kathy Flannigan	
Kimball Art Guild, Kimball	Fabric - Quilts
Cheyenne County Art Guild	

Silent Auction Items

Located in Activities Tent • Open 10 AM - 4:30 PM • All items close at 4:30 PM

At 4:30 pm come and see if you are the winning bidder on the items that you signed your name to. If you are the final name, pick up the bid sheet and bring it to the Check-out counter. Please do not remove the item itself from the display area. A Silent Auction Committee Member will take your merchandise off of the table and give you a receipt for your purchase as it is paid for. Cash, checks, and Credit cards are accepted. No tax will be charged. Thank you for your prompt attention to claiming your winning bids!

LOT # DESCRIPTION OF ITEM

- 1 14 Karat Gold Diamond Necklace
Donated by Alberts Diamondland
- 2 Cluster Pendant with 5 Pear Opals,
8 Round Diamonds, 14K Gold
Donated by Bentley Donovan
of Scottsbluff
- 3 14K Gold Fashion Ring with an Oval
Opal and 2 Round Diamonds
Donated by Bentley Donovan
Fine Jewelry
- 4 Handcrafted Silver Necklace
Donated by Karen Hanna
- 5 Hand Painted Western
Motif Pendent
Donated by K. Cooper Art Studio
- 6 Navajo Turquoise and Pink
Coral Bracelet
Donated by Dallas Langley Trucking
- 7 2 Stone Sugilate Pendant
Donated by Bill Benson
- 8 Navajo Turquoise Jewelry
Donated by Neinheuser Construction
- 9 Lapis Boot Bracelet
Donated by Carmen Gottschalk
- 10 Antique Spurs from 1940 with a
1949 Cattlemen's Book
Donated by Kent From
- 11 Kelly Cowgirl Classic Satchel Purse
Donated by Rivers Edge Ranch Supply

LOT # DESCRIPTION OF ITEM

- 12 Silver Boot Tray
Donated by The Haythorn Family
- 13 Custom Made Bowie Knife with
Damascus Blade
Made by Terry Landenberger
- 14 Hand Crafted 07 Commemorative
Silver Spurs by Artist Shawn Hanna
Donated by Pennington Seed Co.
- 15 Commemorative 07 Ball Belt Buckle
Donated by Olson Feed Yard
- 16 Bracelet of Natural Stone/SS
Donated by Carol Dunne Benson
- 17 Jewelry
Donated by Lori Paulsen
- 18 "Nature Beauty", Acrylic
Donated by Beth Erdman
- 19 Framed Gecke Print
Donated by But Watson
- 20 Pencil Drawing
Donated by Emma Stricker
- 21 Oil Painting
Donated by Edith Bowen
- 22 Watercolor
Donated by Tim Collins
- 23 Edition Print, "Windpower"
Donated by James Whartman
- 24 "Dream Warriors" Painted
Donated by Ross Lampshire

LOT # DESCRIPTION OF ITEM

- 25 **Orig. Photo, Bull Buffalo**
Donated by Don Holst
- 26 **Miniature Buffalo**
Donated by Peggy Campbell
- 27 **"Rubbing Tree" /Framed**
Donated by Judy McElroy
- 28 **Weavings**
Donated by Peggy Nelson
- 29 **"Many Feathers. Many Gifts"**
Donated by Mary Beth Dodson
- 30 **Cattleman II**
Donated by Pam Brown
- 31 **Acrylic Abstract**
Donated by Marlene Blanchard
- 32 **"After the Ride" /Framed**
Donated by Kathy Sigle
- 33 **3 Matching Canisters w/ Lids**
Donated by Kurt Bergdolt
- 34 **Native American or Cowboy with Horse**
Donated by John Thein
- 35 **Original Pastel - Western**
Donated by Tom Peacock
- 36 **Spaniel Dog**
Donated by Jenifer Jude Berge
- 37 **Original Pastel**
Donated by Julie Woods
- 38 **"View at Seneca Nebraska"**
Donated by Cindi Egging
- 39 **Custom Made Pure Beaver Hat**
Donated by Fort Dodge Animal Health
- 40 **1 Day 2 Man Hunt at Wings Near Chappell**
Donated by Wings
- 41 **Round of Golf for 4 People at Hillside Golf Course in Sidney**
Donated by Hillside Golf Course
- 42 **Round of Golf for 4 People at Four Winds Golf Course**
Donated by Four Winds Golf Course
- 43 **1 Year Subscription to DTN**
Donated by DTN Omaha

LOT # DESCRIPTION OF ITEM

- 44 **1 Day Guided Goose Hunt and 1 Night Stay at Lodge in Lisco**
Donated by Riverview Lodge
- 45 **1 Day Guided Goose Hunt for 3 Hunters on North Platte River**
Donated by Rushcreek Adventures
- 46 **1 Annual Single Golf Club Membership**
Donated by Chappell Golf Course
- 47 **Basket and Star**
Donated by Peggy Lobner
- 48 **Metal Art Sculpture**
Donated by Jim Beck
- 49 **2 Denim Jackets with Embroidery**
Donated by Doug Palik and O Sew Pretty
- 50 **Constructed Child's Picnic Table with Materials**
Donated by Deuel County Fair Board and Howit Wood Products
- 51 **2 Weeks of Personal Training**
Donated by Joe Luxa
- 52 **Cheyenne County Community Center Family Membership**
Donated by Community Center
- 53 **Model Toy Tractor**
Donated by Horizonwest, Inc
- 54 **Flip Over Goose Neck Hitch**
Donated by Maddox Motor Company in Sidney
- 55 **Echo Trimmer**
Donated by Rankin Sales
- 56 **Gift Basket Containing Nuts and Candy**
Donated by Carols Nut List
- 57 **Tool Set Containing 18 Volts B & D Tools**
Donated by Hometown Hardware
- 58 **Beef Bundle with Various Beef Products with Casserole Dish/Coffee Maker**
Donated by D & L Meat Company & Tier One Bank
- 59 **National Champ Toy Puller Tractor**
Donated by Foland Farm Machinery
- 60 **4 Rockies Tickets Versus Chicago Cubs**
Donated by Mark and Gerri Nelson
- 61 **2 Ophthalmologic Eye Exams**
Donated by Blackburn Eye Clinic

Silent Auction Items (continued)

LOT # DESCRIPTION OF ITEM

- 62** 2 Ophthalmologic Eye Exams
Donated by Blackburn Eye Clinic
- 63** Golfer Lamp
Donated by Allen Carpet & Furniture
- 64** 1 Rockies Tickets Versus
New York Yankees
Donated by Steve & Cathy Mattoon
- 65** Callaway Iron Golf Clubs
Donated by Anselmo family,
in Memory of Lloyd Mintken
- 66** 1 Locking Aluminum Tool Boxes
Donated by Sauders Automotive &
Truck Services
- 67** 1 Locking Aluminum Tool Boxes
Donated by Sauders Automotive &
Truck Services
- 68** 1951 Plat Map Collectable of
Cheyenne County with Certificate
to Sonny's Super Foods
Donated by Dallas Williams &
Sonny's Super Foods
- 69** Gift Certificate for 10 Meal Deals
Donated by Runza
- 70** 5 Coupons to Pizza Hut
Donated by Pizza Hut
- 71** Food Certificate to Safeway
Donated by Safeway Store
- 72** Food Certificate to Rolling Pin Baker
Donated by Rolling Pin Baker
- 73** 2 Gift Cards to Arby's
Donated by Arby's
- 74** Food Certificate to
Dude's Steak House
Donated by Dude's Steak House
- 75** Coat/Mugs/Tote Merchandise
Donated by United Parcel Services
- 76** Remote Control Car with Coupons
to Dairy Queen
Donated by Radio Shack & Dairy Queen
- 77** NU Print with Frame
Donated by Shirt Tails

LOT # DESCRIPTION OF ITEM

- 78** Beauty Products with
Tanning at Curves
Donated by Honey Comb & Curves
- 79** Cast Iron Lennox Wood Stove
Donated by T&T Lumber and Floor
(will deliver within 75 mi.)
- 80** Hypodown Pillow
Donated by Ogallala Comfort Company
- 81** Gift Package Escapes by
Ogallala Body
Donated by Ogallala Comfort Company
- 82** Goose Floral Arrangement
Donated by Budaroo's Floral and Gift
- 83** Built Ford Tough Series Sponsor Shi
Donated by Justin McBride
- 84** Wrangler Shirts, Duffle Bag, and
George Strait Standee Products
with Book Autographed
Donated by Lory Merritt & Steve From
- 85** 2 NU Football Tickets Versus
Texas A&M with Rooms
Donated by Harney Realty Co. LLC and
Pinnacle Bank in Gretna
- 86** Gift Certificate to Corral West
Ranch Wear
Donated by Corral West Ranch wear
- 87** Embroidered Cattleman's Ball
Leather Jacket
Donated by Marketing Consultants
Scottsbluff
- 88** Membership to Friends of Midwest
Theater in Scottsbluff with Wine,
Iron Stand, and Glass
Donated by Friends of Midwest Theatr
& Mark and Merva Empson
- 89** Veterinary Services to Small
Animals Gift Certificate
Donated by Midtown Animal Hospitol
of Scottsbluff

LOT # DESCRIPTION OF ITEM

- 90 200 Doses of TES Component with Tylan
Donated by Vet Life/Jeff Markel
- 91 Round Cow Hide Area Rug
Donated by Southwest Hide Company
- 92 Mary Kay Gift Basket & Gift Certificate for 100 Min. of Tanning and Pedi Slippers
Donated by Clearance & Evelyn Correll and Sun Studios
- 93 Boundless Beauty Print by Taylor with 1 Year Membership to Western Nebr. Arts Center
Donated by Compliments and Western Nebraska Arts Center
- 94 Solar Powered Fence Energizer
Donated by HMB Fence Company
- 95 2 Couples Sleigh Ride
Donated by Dashing Thru The Snow
- 96 100 Disc Changer
Donated by Ag-Tron Equipment & Supply LLC
- 97 Mary Kay Gift Basket & Table Runner with Hand Painted Stars
Donated by DMK Consulting & Borders Quilt Shop
- 98 "Husker Putter" Print
Donated by Mimi Beaver
- 99 Self Propelled John Deere Lawn Mower
Donated by 21st Century
- 100 Iron Candle Holders
Donated by The Iron Shoppe
- 101 26' John Deere Mountain Bike
Donated by MV Equipment
- 102 Big "Bear Running thru Stream" Needle Point
Donated by Frances Steinfeld
- 103 Silk Bouquet with Earth Tone Pottery on Stand
Donated by House of Flowers
- 104 Laramie Snowy Range Mountain Scene Print
Donated by Cynthia Lojek
- 105 Victorian Vase
Donated by Accents Home Décor
- 106 Giclee Print "Cattle in Pasture"
Donated by Nadine McHenry
- 107 Western Floral Arrangement
Donated by Nan Mull, All-American Realty

LOT # DESCRIPTION OF ITEM

- 108 Framed Oil Painting of "Bucket with Water Pump"
Donated by Rachele Eversol
- 109 Windmill Desktop Sculpture
Donated by Ken Martin
- 110 Nebraska Sky Print
Donated by Karen Allen
- 111 Handcrafted Stained Glass Lamp
Donated by Arden Miller
- 112 Room for Cancer Patient Taking Treatment at Dorwart Cancer Center
Donated by Motel 6
- 113 1 Night Hotel Room w/ 2 Tickets NU Versus Iowa State Football Game at Settle Inn in Gretna
Donated by Pinnacle Bank in Gretna, Mark & Merva Empson, & Morrison Farms
- 114 Decorated Iron Antique Tractor Seat
Donated by Sharon Deaver
- 115 Stihl Weed Eater
Donated by Eichners
- 116 Limited Edition Horsehead Productions Canvas Prints
Donated by J.F. Policky
- 117 Limited Edition Horsehead Productions Canvas Prints
Donated by J.F. Policky
- 118 Orthodontic Treatment for 1 Person
Donated by Dr. Joyce Simmons
- 119 Portable Campfire Log with Ceramic Log Fire Dancer
Donated by Dan Van Vleet
- 120 Kwik Gates Bed Extender for Pickup
Donated by Convert-A-Ball and Robert Van Vleet
- 121 Kwik Gates Bed Extender for Pickup
Donated by Convert-A-Ball and Robert Van Vleet
- 122 Perennial Planted Pot
Donated by Sidney Greenhouse
- 123 Perennial Planted Pot
Donated by Sidney Greenhouse
- 124 8 Sunday Brunches at Chances R in York
Donated by Chances R

Silent Auction Items (continued)

LOT # DESCRIPTION OF ITEM

- 125** Pewter Dish & Luncheon at Member's Dining Room in Washington DC with Rep. Adrian Smith
Donated by Adrian Smith
- 126** Commemorative P&D State Quarters
Donated by Paul Robinson
- 127** "Blacksmith" by Aaron Pyle Print with Matting Framing for Pyle Print
Donated by Sudman-Neumann Heritage House and Courtyard Matting and Framing
- 128** Leupold Wind River Cascades Binoculars
Donated by Chappell Fire Department
- 129** Candle, Wreath, Placemats Gift Basket
Donated by Sue's Hallmark
- 130** Leather Recliner Chair
Donated by Steffan's Home Interiors
- 131** Child's Rocking Chair and Footstool
Donated by Carmen Gottschalk
- 132** Tom Osborne Football and Autographed Book
Donated by Pat Dorwart
- 133** Autographed Football from Tampa Bay Buccaneers
Donated by Defensive Coordinator Monty Kiffin
- 134** Autographed Football from Tampa Bay Buccaneers
Donated by Defensive Coordinator Monty Kiffin
- 135** Gas Lamp Heater
Donated by Kinder Morgan
- 136** \$100 Gift Certificate to Omaha Steaks with Cookbook and Seasonings
Donated by Omaha Steaks
- 137** ArBon Cosmetics Gift Basket
Donated by Becky Franken

LOT # DESCRIPTION OF ITEM

- 138** Large Red Italian Decorative Bowl
Donated by Finishing Touches
- 139** Leather Belt with Silver Conchos
Donated by Fancy That
- 140** 3 Western Candle Holders
Donated by Shopping Trips
- 141** Senator Hagel Gift Set - Coffee Mug, Book, and Lunch in Washington, DC
Donated by Senator Chuck Hagel
- 142** \$500 Toward the Purchase of a Wedding Gown at Ellynn's
Donated by Lynne Rustad
- 143** 4 Western Denim Placemats
Donated by Carmen Gottschalk
- 144** Cloudscape
Donated by Nancy Biesemeier-Dee
- 145** Waiting for the Parade
Donated by Casey Hunter
- 146** Hand Tooled Saddle Bronc
Donated by Mike L. Meyer
- 147** Quilt Conglomerate
Donated by Kimball Quilt Guild
- 148** Out Of The Timber
Donated by Barbara Schaffner
- 149** Innocense
Donated by Julie Nighswonger
- 150** Less Voigt Performax Bit
Donated by Flying W Ranch 'N Tack
- 151** Large Cutler Metal Silhouette
Donated by R & L Metal
- 152** Mare and Foal Cutout
Donated by R & L Metal
- 153** "Spring in the High Country" Framed Print
Donated by Fred Fellows

Working Cow Horse Competition

2 PM in the Behlen Arena

NAME	CITY, ST	CALCUTTA PRICE	SCORE
Doc Foster	Hyannis, NE		
Shawn Lake	Bayard, NE		
Lance Most	Ogallala, NE		
Brian Lee	North Platte, NE		
Tim Vinton	Whiteman, NE		
Jarrold Storer	Sutherland, NE		
Cord Haythorn	Arthur, NE		
Denley Norman	Arthur, NE		
Jessie Hefner	Arthur, NE		
Sage Haythorn	Arthur, NE		
Craig Haythorn	Arthur, NE		
Larry Hengstler	Arthur, NE		
John Kohoe	Lodgepole, NE		
Joe Finney	Seneca, NE		
Kelly Sullivan	Ordway, CO		
Tim Vivion	Bingham, NE		
Dusty Hackett	Walden, CO		
John Jensen	Arthur, NE		
Tyler Minor	Hyannis, NE		
Joe Minor	Hyannis, NE		
Ed Minor	Gordon, NE		
Gary Watt	Sidney, NE		
Jacey Watt	Sidney, NE		

JUDGES: Jeff Wahlert & Clark Geary

TIMER: Carolyn McMillen

SECRETARY: Donna Juelfs

CATTLE: Donated by Dinklage Feed Yards

ARENA: Donated by Behlen

2:00 AUCTIONEER: Steve Dorran

Trail Boss Brunch Auction Items

1. "Retro Goes Native" by Mary Hunt of Gering, NE 6' Fiberglass Boot

Roy Rogers would've made happy tracks directly to Dale Evan's door if he'd seen her wearing a pair of boots like these, reminiscent of an era of TV westerns where the good guy always won the fight (and the girl). And what would a good western be without a few Indians? The design on this boot is an amalgamation of floral patterns derived from beadwork of the Eastern Sioux and Northern Plains tribes. So, if you have fond memories of following those happy trails, then this is the boot for you!

Donated by VanNewkirk Herefords

2. #1/250 Cattlemen's Ball Commemorative Gift Box

The Cattlemen's Ball Commemorative Gift Box is an original concept and unique to the 2007 Cattlemen's Ball. This is the 1st of 250 numbered boxed. Featured items of the box are a Cattlemen's Ball Glass Christmas Ornament, which was locally designed, signed and numbered; and a Cattlemen's Ball Chef's Apron. Other items included are a Nebraska quarter, Cattlemen's Ball postcard, spice packet, cowboy pencil, Cowboy hat sugar cookie and Sandpoint Cattle Co. pen. Even if you not the winning bidder, be sure to head over to the General Store to get a Gift box of your own.

Designed by Dawn Batt, Chairman, General Store

3. 20 Gauge Shot Gun

Beretta 471 Silver Hawk 20 gauge shot gun, side by side, 28" barrels, 3" chambers, with modified and full choke. Donated by Nick Wilson, Lodgepole, NE

4. Golf Package

Four golfers may enjoy a two day, one night stay including an evening meal at the Sand Hills Golf Club in Mullen, NE. Test your skills on a course that has been named as one of the top 100 courses in the world. Must be first time visitors to enjoy this package. Other restrictions apply.

Donated by Sand Hills Golf Company, Mullen, NE / Dr. Jerry Rounsborg

5. Terry Redlin Print – "His First Homecoming"

Limited Edition #178 of 3,500 signed and numbered prints. Size 18 1/2" x 32"

Donated by Farmer's National Company, North Platte, NE

6. Live Cover Breeding

Classic Cajun Gold is a 2001 double registered Shoemaker/Wiescamp bred Perlino American quarter horse stallion.

Donated by Classic Cajun Gold Group / Dr. Mark Hartman and Jacqueline Hartman / Frank Solano / Vance Siedenburger

7. Cabela's BBQ Package

Make your summer entertaining the best it can be with a Brinkman grill. This package also comes with a propane bottle, BBQ tool set and a wide assortment of Cabela's seasonings.

Donated by Cabela's, World's Foremost Outfitter, Sidney, NE

8. 18K White Gold Carrera Green Quartz Pendant — Approx. 9.99 CTW

Donated by Borsheim's Fine Jewelry and Gifts

9. "The Warmth of Dear Friends" by Michele Denton 6' Fiberglass Boot

I am a "symbolistic" artist, mainly working in watercolor. My favorite subjects have always been people and animals. Often I combine the two and show an emotional or spiritual interaction between them. Through my art I hope to share an awareness of nature and the beauty and importance it holds for all of us. My boot portrays 3 cowboys sharing a moment by the campfire, also incorporating leatherwork taken from items made by my father. It is painted in complementary colors of blues, oranges and blacks.

Donated by Fiberglass Animals of Shelton, NE

#1



#2



#8



#9



Trail Boss Brunch

MENU

Honey Wheat Rolls

Crisp Lettuce and Spring Mix Salad with Grape Tomatoes, Red Onions, Croutons
and Mixed Cheeses. Served with Whiskey Creek's Own Ranch Dressing

6 oz. Corn Fed, Source Verified, 28 day Wet Aged Beef Filet

A Skewer of Large Black Tiger Shrimp, Wrapped in Bacon and Slow Cooked Over a Wood Fire
White Cheddar and Chipotle Mashed Potatoes

A Vegetable Medley of Yellow Squash, Zucchini, Red Peppers and Button Mushrooms Sauteed
in Honey Lemon Butter

Gourmet Turtle Cheesecake

Dinner Wine



Sponsored and Served by:



James Arthur
VINEYARDS

TRAIL BOSS BRUNCH SCHEDULE

Brunch Emcee: Jeff Campbell & Suzy Ernest, KSID Radio

Welcome

Introductions

Chairmen

Host Family

Dr. Ken Cowan - Director, UNMC Eppley Cancer Center

Invocation

Brunch

Ann Marie Bosshamer, Advisory Board Chair

Presentations

Trail Boss Brunch Auction

CENTERPIECES ARE FOR SALE! ★ Designed by Sidney Floral

Floral arrangements on the Trail Boss tables are for sale. There is a price tag on each arrangement, along with a tag that the purchaser needs to fill out for the ball's reference. Please fill out both tags and return one with your payment to the Cattlemen's Ball General Store between 1 pm and 5 pm. After 5 pm, you can pay for your arrangements at the Auctioneer's Clerk office.

Please leave one of the tags filled out with your information on it, so that others know that it has been purchased already.

You may take your arrangement with you anytime after the evening supper.

This is a great way to decorate and donate at the same time!

Afternoon Activities

CANCER SCREENINGS AT THE EPPLEY TENT BETWEEN THE ACTIVITIES AND CASINO TENTS (1 pm – 5 pm)

Take this opportunity to visit the professionals. Many nurses are here from the Eppley Cancer Center to perform tests and give you information.

TOURS OF THE RANCH (Going from 1- 4:30 pm)
Pick up point is at the southwest corner of the Activities tent. This trolley will wind you through a bit of the ranch up, past the stone barn, and up to the Bull and Heifer Development Center on the north side of Hwy 30.

GENERAL STORE (Open 10 am – 5 pm)
All of the items in the Cattlemen's Ball General Store are donated, so this is pure donation money, plus there are some of the most amazing ideas for gifts that you will not find anywhere else!

CABELA'S TENT
How often does Cabela's come to you? This is your chance to see what the "World's Foremost Outfitter" has to offer you! Cattlemen's Ball logo clothing will be available here, along with many other Cabela's items for sale. Forget your jacket for the concert tonight? Get one here!

COWBOY CAMP
Get a glimpse of what the real old west was like! A chuck wagon, camp fire, bed rolls, and music will all be a part of this one of a kind display.

PASTURE BINGO (Tickets on sale 1 pm – 5 pm)
A grid is laid out between the General Store tent and the Event tent with a number in each square. For \$20 per square, Pasture BINGO is your opportunity to buy a square and if you are lucky, a cow will "pick" your square. Tickets will be available wherever the Raffle tickets for the pickup and tractor are being sold. There are only 225 chances available. Come by and buy your favorite number. At 5 pm a cow will be let loose to 'do her business'. The winning number will be awarded

the amount of money raised. This money will be presented at the evening meal presentations. Thank you for your tax deductible donation.

UNL BEEF PROGRAMS DISPLAY IN THE COUNTY TENT

NEBRASKA Beef Education Excellence for the Future" The UNL Animal Science Department is hosting the display.

WINE/BEEF/COUNTY TENT Open 10 am – 5 pm

Vendors and Displays include:

Dallas Knotts (Prairie Dog Irradication)
R & L Metal Silhouette
Flying W Ranch 'N Tack
Western Cable, Chappell Feedlot
Monica Paulson: Cancer Cure
NE Beef Council
NE Corn Board
NE Cattlemen
Area 5 CattleWomen
Pfizer Animal Health
UNL Animal Science
Chappell Chamber
Cheyenne County Visitors/State Tourism
DTN-Kim Price, Trans Ova Genetics
Wagon Tails, NE Beef mobile
High Plains Art Council

20
Cattlemen's Ball
07



Wine Tasting

1 pm – 5 pm

\$5 for 5 tastings of these premium Nebraskan wines

WINERIES REPRESENTED:

James Arthur Vineyard ★ 17 Ranch Winery ★ Table Mt Vineyards ★ Prairie Vine Vineyards

Jisa Farmland Cheese has graciously donated all of the cheese for the tasting! Thank you!

CASINO

(Open from 1 pm to 5 pm)

Join us in the Casino to try your hand at Blackjack, Texas Hold 'Em, or Craps

We are doing something different this year... **the chips that you buy are a donation!** You are able to 'redeem' your chips for chances at 4 large prize items. The **casino chips are only good for playing games in the casino** and then turning them back in for chances at the prize items.

PRIZES INCLUDE

Trip for 2 to Las Vegas - Donated by Rocky Mtn, Travel King, Inc, Sylvia Mucklow, another Trip for 2 to be announced, 42" Flat Screen TV, and a Ladies' Only Item.

Winners of the casino prize items will be announced at the Evening Meal around 7 pm.

BAR

(OPEN 1 pm – Midnight)

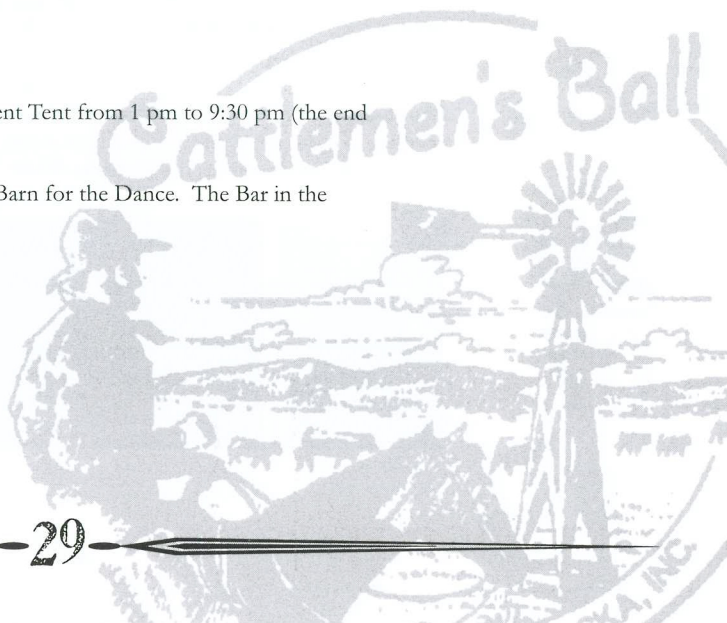
Bar is OPEN in the Casino/Bar Tent located near the Event Tent from 1 pm to 9:30 pm (the end of the Jo Dee Messina Concert)

9:30 pm to Midnight the Bar will move up to the Calving Barn for the Dance. The Bar in the Casino tent will be closed.

THE 07 CATTLEMEN'S BALL BAR WILL OFFER:

- \$2.00 Draw Beer
- \$3.00 Well Drinks
- \$4.00 Top Shelf Selections

We appreciate you acting responsibly!
We assume no risk for your safety.



Cattlemen's Ball General Store

When you enter the General Store you will be amazed by the corn wagon in the middle of the tent stacked with **250 Cattlemen's Ball Commemorative Gift Boxes**. The featured items in the box: Cattlemen's Ball chef's apron, glass Christmas ornament with the Ball logo inside, Nebraska quarter, postcard depicting Sandpoint ranch as well as other things about the Ball, spice packet, cowboy pencil, Sandpoint ink pen, and a cowboy hat sugar cookie. Make sure you purchase a box early as they will go fast!

The General Store has many unique hand crafted items that would make great gifts for loved ones or for you. Plan on stopping by early as many items are one of a kind. Don't hold back on your shopping. We have secure baggage check and shuttle service to your vehicle. The General Store is open from 10:00 am to 5:00 pm. You will find specialty sections within the General Store

The Kitchen Store features: homemade yeast breads & jellies, biscotti, cinnamon rolls, cow pie fudge, old-fashioned candies, beef sticks, homemade wines, coffee beans, red splatter ware coffee pot gift basket, 3 stack heart shaped bowls, goose pitcher, chef pitcher, hand crocheted dish cloths, and more.

Enter the **Faith and Caring corner** through the lighted tree arch. Here you will find chemo survival kits cans, crosses, inspirational plaques and photos, hope journals, church birdhouse, wheat woven cross, baby afghan, handmade burp towels & bibs, handmade patchwork bear, trivets, and more.

General Store Silent Auction items: floral arrangement in a resin saddle, child's hand painted desk, antique duck decoy, pineapple pattern afghan, leather tooled coat & hat hanger, 8-24 kt gold rim drinking glasses with golden retriever, large wall clock, 50 x 60 appliquéd quilt, and a hand appliquéd quilted pillow. Come in and enjoy the "bidding wars" over these great items!

Look for the 2007 logo items: t-shirts, polo shirts, vests, jackets, and kids T-shirts at the Cabela's Tent.

Throughout the store you will find handmade jewelry, Christmas ornaments, many handmade cards, pottery, logo cowbells, birdhouses, western décor items, western print art, Americana stars, and so much more.

Shop for yourself, a friend or family member, or start your Christmas shopping early. Remember, we are working to cure cancer and any purchase made, no matter the amount, is one step closer!

Thank you for shopping the General Store!

20
Cattlemen's Ball
07



Vendor Stores

The General Store vendor tent will house great crafters and artists selling their wares. Make sure you visit their tent to see the Nebraska talent. The store will be open from 10:00 am to 5:00 pm. This year's vendors are:

CABIN COUNTRY DESIGNS, ANNE KERST, SIDNEY

Log and rustic décor, barn wood furniture, cowboy and western art, hair on hide furniture

FACES OF THE PRAIRIE, DENISE MOORHEAD, BRULE

Specialize in fur accessories, Emmrod fishing poles, bird houses

HEART-N-SEW, SANDRA RUNGE, LODGEPOLE

Handcrafted rustic furniture, seasonal items, and home décor

KATZ DESIGNS, KATHY KRAHULIK, BRIDGEPORT

Tapestry, faux leather & suede pillows, silverware angel pins, cowgirl angel pins, appliquéd bath towel sets, western lodge & country décor

LEATHER ORIGINALS, JIM BEEMAN, LODGEPOLE

Leather tooled mirrors, hat & coat racks, home décor and more

MOM & ME, SUZANNE O'DONNELL, OMAHA

Hand made jewelry specializing in cancer bracelets, rosaries and much more.

MOOSE & GOOSE GALLERY, DEBI HENDRICKSON, LODGEPOLE

Custom framing and general line antiques along with vintage jewelry and cowboy gift items

PICTURES MOR, LINDA FORBES, CRAWFORD

Scenic photography; cowboys, church steeples, old buildings, and more

PLATA NUEVA/PLUS MORE, BARB REDLINGER &

NANCY CRISPIN, BENNINGTON

Barb specializes in .925 sterling silver jewelry & glass bead items
Nancy will have hand painted purses, wine glasses, bar stools & more

RICKY & LUCY'S GREENHOUSE, TERESA WOLFF, SIDNEY

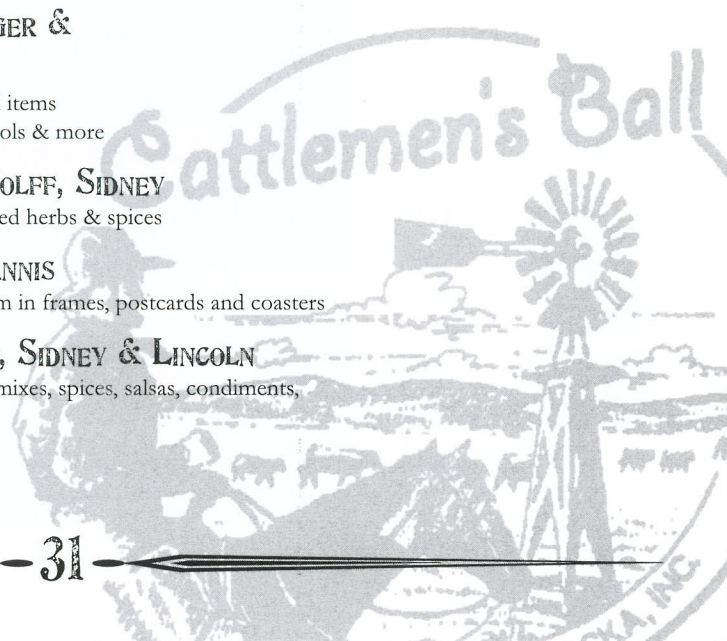
Plants, flowers, pottery, iron work, home grown & packaged herbs & spices

SANDHILLS SPLENDOR, LINDA BROWN, HYANNIS

Specializing in windmill photography and showcasing them in frames, postcards and coasters

TASTEFULLY SIMPLE, DAWN & JESS BATT, SIDNEY & LINCOLN

The taste you love, the time you deserve. Beer bread, dip mixes, spices, salsas, condiments, sauces, spreads, oils, dressings, and desserts



On Stage

Power of the Point

BEEF.

RURAL LIFE.

RESEARCH.

Special Heifer Calf Pregnancy Auction

Broadcast live on

**Saturday,
June 2, 2007
1:30 P.M.**

IN THE ACTIVITIES TENT



Call 800-431-4452
for a buyer number



Thank you

to these generous donors for their
donations to this one-of-a-kind event!

Baldrige Bros.

Bohi Land & Cattle

Deer Valley

Limestone, LLC

Rishel Angus

SandPoint

Sitz Angus

Stevenson Basin

TC Ranch

Thomas Angus Ranch

**20
Cattlemen's Ball
07**





2:30 PM On the Stage in the Activities Tent
Emcee is Sally Haythorn



CLOTHING FEATURED BY THESE SPONSORS:

Cruel ★ Woolrich ★ Carhart ★ Wrangler
Outback Trading ★ Cabela's ★ Justin Boots



Clothing will be modeled by local men, women, and children.

Music will be provided by Cabela's on the JumboTron screen.

Many of the selections from the Style Show will be for sale in the Cabela's Tent after the Show.

Evening Program

Emcee: Mike LePorte, KRVN Radio

5:00 PM OPENING CEREMONIES

Supper is served!

6:30 PM WELCOME & INTRODUCTIONS

Host Family

Chairmen

Advisory Board

Dr. Ken Cowan

Director of the Eppley Cancer Center

Dr. Bill Lydiatt and Dr. Dan Lydiatt

7:00 PM Raffle Drawing by Governor Heineman

Working Cow Horse Event Winner

Presented with a Commemorative Belt Buckle

Donated by Ron & Dorothy McMillen

Pasture Bingo Winner Announced

Casino Raffle Winners Announced

Results of the Heifer Calf Auction Recapped

LIVE AUCTION

Auctioneer: Steve Dorran

8:00 PM JO DEE MESSINA CONCERT

9:30 PM DANCE to High Horses in the Calving Barn

MIDNIGHT

Trail Boss ticket holders please sign your name to the table number card at the brunch and then return to that table for the evening meal. Those of you who have trail boss tickets, but did not participate in the brunch will need to find a table that has empty places for names on the table tents. Thank you for your cooperation!

Top Hand ticket holders need to be aware that there is no reserved seating for the evening meal and concert. The event tent will be completely cleared out prior to 5 pm. Please stand in line with those that you would like to sit with. If someone needs to sit, rather than stand in line, there will be picnic tables at the entrance of the Top Hand meal tent for them to wait for the rest of their party to go through the meal line. Volunteers will assist you in your seating. Please help us in our efforts to move everyone through the line, and be seated smoothly! Thanks!

20
Cattlemen's Ball
07

EVENING MEAL MENU

Sponsored by: *Cabela's*



Strawberry Spinach Salad with
Homemade Poppyseed Dressing

Prairie Gold Seasoned U.S.D.A.
Choice 12-ounce Prime Rib

Augratin Potatoes

B-B-Q Green Beans

Sour Dough Dinner Rolls

DESSERT: Peach Cobbler
Ghiradelli Brownies

Iced Tea & Coffee



Saturday Evening Live Auction Items

1. "High Plains Gold" by Jess Nelson of Fort Worth, TX 6' Fiberglass Boot

He has depicted Chimney Rock with the buffalo and Jailhouse Rock with antelope on the other side. He had a "meet the artist" wine and cheese tasting last weekend at a restaurant in Sidney with all monies going to the Eppley cancer fund. He has done a fantastic project, patterned his boot after his own pair of Lecheze boots and has gotten the Lecheze Company to donate a pair of boots to the person that purchases his boot. We are so grateful to Jess for agreeing to be part of our benefit.

Donated by Sidney Vet Clinic.

2. Creep Feeder

Help add pounds to the weaning weights of your calves with this 8' 150 bushel Apache Creep Feeder. It comes with panels and is portable up to 3 tons.

Donated by Apache/Palco, Norfolk, NE

3. Self-Catching Head Gate

Big Valley M Series self-catching head gate, suitable to handle livestock 300 pounds and up. Will attach to any Big Valley chute being made today.

Donated by Behlen Country, Columbus, NE

4. Avalanche Tickets

Plan a fun filled trip with 13 of your closest friends to see the Colorado Avalanche play at the Pepsi Center. Your party can enjoy the game from a private suite with all the amenities.

Donated by Denver Auto Auction

5. Elite trailer

2007 Elite 24' Aluminum goose neck trailer with 7000 lb axles, 2 divider gates & 16" radial tires.

Donated by Mid Plains Equipment Inc., Kearney NE

6. Titan Trailer

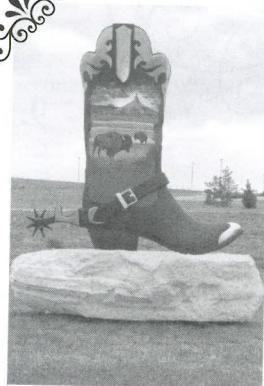
2007 Titan 16' Steel goose neck trailer (Rancher Series) with 6000 lbs axles & 16" radial tires.

Donated by Mid Plains Equipment Inc., Kearney, NE

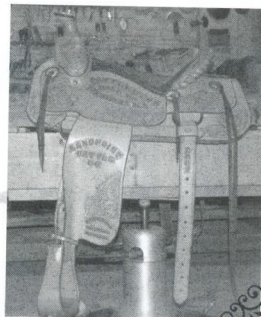
7. 2007 Nebraska Cattlemen's Ball Saddle Made by Dennis Rose of Rose Saddlery

Tree: 15 and 1/2 inch Dee Pickett • Cante: 4 inch • Horn: No. 4 post dally with 2 and 1/4th inch cap that is double sewn • Also double sewn buffalo leather padded seat • 7/8 inch double rigger • Pre-twisted 4 post bleavins, 3 inch stirrup leathers • 2 and 1/2 inch covered bell bottom stirrups

Donated by the Faessler Family



#1



#7



Saturday Evening Live Auction Items (cont.)

8. "Kick Ass Western Fantasy" by Peg Fowler of Harrison, NE 6' Fiberglass Boot

This boot represents the artists' interpretation of the Nebraska landscape. The blue symbolizes the river with the landscape above, then the clouds in the sky with a bolt of lightning, a storm is brewing on the horizon, the boot pull has an ear of corn with the seam representing the stalk. This is a beautiful representation of our Nebraska horizon, with all the color and imagery that we have in our part of the world.

Donated by Rauner Associates of Sidney, NE.

9. Dinner for Eight at the Governor's Mansion

Governor Dave Heineman and First Lady Sally Ganem will host dinner and a private tour of the Governor's Mansion for a party of eight.

Donated by the Governor and First Lady

10. 2 NASCAR NEXTEL Cup Race Hospitality & Ticket Package

Enjoy a one night stay at the Westin Crown Center Hotel on Sept 29th and two tickets for the Sept 30th Nextel Cup Race at Kansas City Speedway. The DuPont Hospitality Tent Pass includes complimentary food and beverages, race memorabilia, pit tours, and a visit from four-time champion Jeff Gordon.

Donated by Pioneer Hybrids International, A DuPont Company



11. Colonoscopy from Dr. Magana

One screening colonoscopy to be performed at Regional West Medical Center by Dr. Magana.

Donated by Dr. Magana

12. Biozyme Product

2 Tons of Vitaferm Concept Aid Range Mineral. This is a Micronutrient package for beef cattle.

Donated by Biozyme, Inc.

13. Wet Distillers Grain

Two loads of wet distillers grain to be picked up at Sterling Ethanol.

Donated by Sterling Ethanol & Colorado Agri Products

14. Spring Calving Package

This is a must have for any rancher. Kawasaki 4 wheeler, Cabela's ATV Drop Basket Rack, ATV Heater Grips and Thor Spot Light will help make your calving season a successful one.

Donated by Cabela's, World's Foremost Outfitter, Sidney, NE



Saturday Evening Live Auction Items (cont.)

15. Cattlemen's Ball Commemorative Shotgun

Commemorate your attendance of the 2007 Cattlemen's Ball. This Ruger Red Label Over-and-Under 20 gauge shotgun has 26" barrels, pistol grip and is engraved with the Cattlemen's Ball Logo.

Donated by Cabela's, World's Foremost Outfitter, Sidney, NE

Engraving by Sagebrush Engraving

16. 2 Person Mexico Dove Hunt

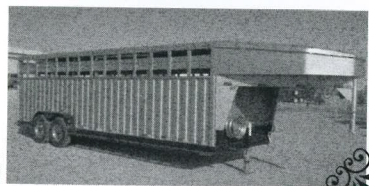
Muy Grande Outfitters in Sonora, Mexico has some of the greatest hunting in the world. 2 people can enjoy a 3day, 3 night stay during the 2007-08 Hunting season (Nov – Jan). Package does include airfare, hunting licenses, and accommodations at a brand-new hacienda, meals and bird boys. Must be 18 years of age.

Donated by Cabela's Outdoor Adventures

17. Clementine by Grace Blowers of Scottsbluff, NE 6' Fiberglass Boot

My boot, Clementine, was inspired by my many years of living in Wyoming, where ranchers and ranch hands best expressed their individuality by the boots they wore. The boot is composed of 28,000 ceramic tiles and four tempered glass car windows, along with 239 Austrian crystals which compose the ankle bracelet. The boot took approximately 75 woman hours to construct. She is weather proof, but because she is glass, should not be climbed or played on.

Donated by Cabela's Furniture of Chappell, NE.



Jo Dee Messina

DELICIOUS SURPRISE: THE BIOGRAPHY

Jo Dee Messina is an award-winning, multi-platinum recording artist that has given her heart and soul to find success. She's had 9 #1 singles, has been honored by The Country Music Association, The Academy of Country Music and The Grammy Awards and was the first female country artist to score three multiple-week #1 songs from the same album. But success aside, Jo Dee has faced more than her fair share of adversity. She's battled some demons along the way and experienced the twists and turns that define all of our lives. If anything these life experiences have re-invigorated her and given her a new perspective, which in turn has produced, in her words, her truest recording to date.

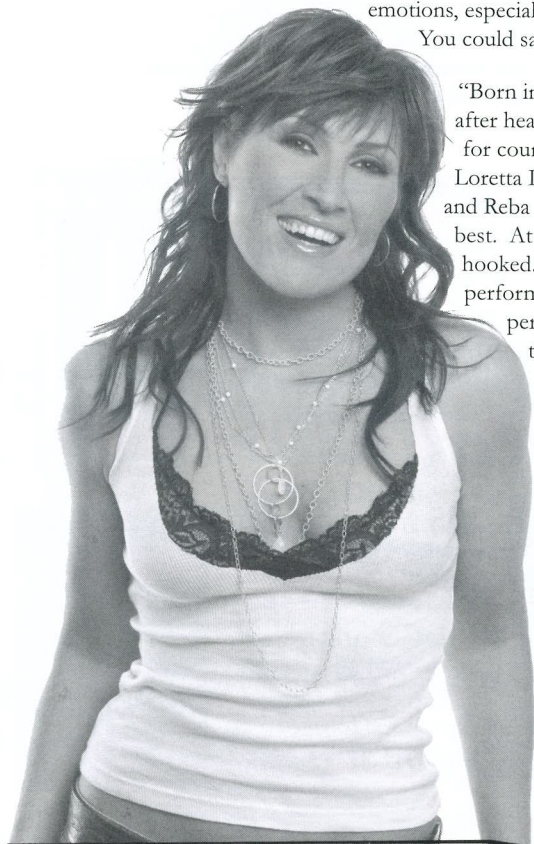
Delicious Surprise is Jo Dee's 4th studio album. It is that rare recording that captures the true essence of an artist's soul. You see, rather than talk about what has occurred in her life, Jo Dee has chosen to sing about it. She's put together a group of songs that come from her heart, a group of songs that are meant to convey a musical message of optimism, strength and hope. As the songs say, while life's experiences may be hard, it's those experiences that make us who we are and make life worth living.

"Music has always been an enormous part of my life," said Jo Dee. "It's not just something I do, it's part of who I am. Songwriting to me is my refuge, a safe place to me where I can go to spell out my emotions, especially when dealing with tough situations. It helps me to gain perspective. You could say that songwriting gives me emotional freedom."

"Born in Holliston, Massachusetts, Jo Dee was first attracted to country music after hearing the recordings of Alabama and Hank Williams, Jr. As for her love for country music, it grew as fast as her respect for its heroes. Dolly Parton and Loretta Lynn, the strong women of country, that wrote and sang from the heart, and Reba McEntire, the hard-working, blue-collar girl whom Jo Dee related to best. At six, Jo Dee had her first public performance and from there on she was hooked. Thirteen brought a band that she had formed and more experience performing throughout clubs in the Northeast. Jo Dee did what she had to, to perform - booking and marketing her own shows, lugging gear and keeping the books. At 19, she made the difficult decision to move to Nashville. She didn't know a soul, had no grand plan, but what she did know, was that she wanted to sing. It was there that Jo Dee would lay down roots and chase her dream.

"My greatest hope is that somewhere, somebody will hear this record, and find in it what I've found in music my entire life," said Jo Dee. "Reassurance, understanding, inspiration, strength and compassion."

Make no mistake, Jo Dee Messina is here to stay and despite all that she has been through she stands strong and defiant, with a clear sense of her purpose and passion. Life is good for Jo Dee, but don't ask her about it, listen.



High Horses

A very unique group of musicians, put together from members of other bands to play Cheyenne Frontier Days. After playing together, the great sound and vocals, let the band to stay together and venture upon their own.

PJ WILBER

Lead Vocals Cheyenne, WY
PJ is widely recognized as one of the better vocalists in the West. He has the range to sound like Hank Jr., Vince Gill, Dwight Yocum or Randy Travis.

RANDY WATSON

Electric & Upright Bass Guitar Ft. Morgan, CO
Randy has played professionally since 1981. During that time he has opened for Chris Ledoux and Shelly West.

OJ METZGAR

Lead Guitar Albuquerque, NM
OJ has played since he was 7, and has played professionally since the age of 16. OJ began touring at the age of 18, playing a circuit from Georgia to New York. He has also toured Tokyo and Korea, and opened for Freddy Fender, Ginger Baker and the Classic Four.

WILLIAM WILBER

Vocals, Rhythm Guitar & Keyboards Chappell, NE
Bill has played professionally since the age of 16. He has opened for the likes of the Doors, Blood Sweat & Tears, Tommy Cash, Jumpin Bill Carlyle, Jeanne C. Pruitt and Billie Jo Royal.

ROB WILBER

Percussionist & Vocals Chappell, NE
Rob started playing at the age of 18. He writes most of the originals for the group.



2008 Cattlemen's Ball

Hosted by:

NIEWOHNER CATTLE COMPANY

Niewohner Family

CHAIRMEN:

Ray Bennett

Highland Custom Cattle Feeding
of Cedar Rapids
(402)649-2457
rbennett@gpcom.net

Jeanne Reigle

Reigle Farms & Feedyards of Madison
(402)454-2138
jjreigle@telebeep.com

Kandi Bremer

St Edward
(402)-741-0323
tkbremer@dishmail.com

Kurt Kruse

Albion
(402)649-1267
jdkruse@esu7.org

FOR TICKETS CONTACT:

Wayne Boileson

Cornerstone Bank
Albion, NE
1.800.933.3714

Legend

A EVENT TENT

Trail Boss Brunch 11 am
Trail Boss Auction Noon
Evening Meal 5pm
Evening Program 6:30 pm
Jo Dee Messina 8 pm

B ACTIVITIES TENT

Trail Boss Champagne Reception 10am
Silent Auction 10 am - 4:30 pm
Art Show 10 am - 5 pm
Heifer Calf Pregnancy Auction 1:30 pm
Style Show 2:30 pm
Beef Cooking Demo 4 pm

C EPPLEY CANCER CENTER

Screenings 1 pm - 5 pm
First Aid

D BAR & CASINO

Casino open 1 pm - 5 pm
Bar open 1 pm - end of concert

E VENDOR STORES

Open 10 am - 5 pm

F CATTLEMEN'S BALL GENERAL STORE

Open 10 am - 5 pm

G WINE/BEEF/COUNTY TENT

Wine tasting event 1 pm - 5 pm
Beef displays
Community booths

H CONCESSIONS

Open Noon - Midnight

I CABELA'S

Open 10 am - 5 pm

J HERO'S MEMORIAL WALL

Country Church

K RODEO ARENA

Working Cow Horse Event 2 pm - 5 pm

L CALVING BARN

Dance
Bar open here after concert

M TOWN SQUARE

N COWBOY CAMP DISPLAY

O TREASURER

Security

P VOLUNTEER PARKING

Q TRAIL BOSS PARKING

R TOP HAND PARKING

S PASTURE BINGO

Cow is let loose at 5 pm

X RESTROOMS

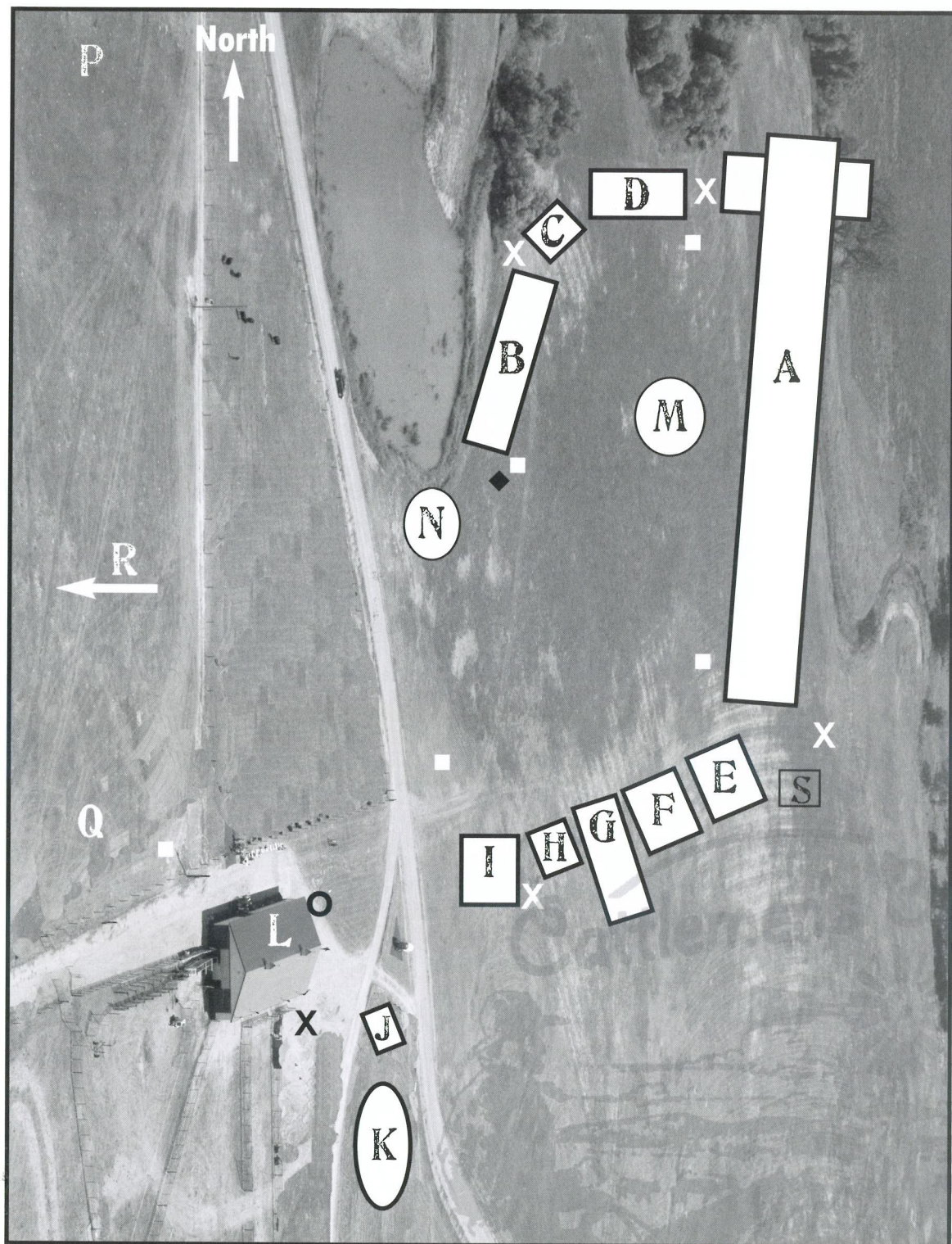
5 areas around the grounds

■ TROLLEY PICK UP POINT FOR RANCH TOURS

□ TROLLEY STOPS/ PICK UP ON GROUNDS & PARKING

20
Cattlemen's Ball
07

Thank You!





2007 *Schedule of events*

- 10:00 AM Champagne Social Hour in Activities Tent
Art Show and Silent Auction Begin
General Store, Vendor Store, and Cabela's Tent Opens
- 11:00 AM Trail Boss Brunch
Live Auction
- 1PM - 5PM Activities
Cancer Health Screenings, Pasture Bingo, Concessions, General Store,
Commercial Vendors, Tours of the Ranch, Western Displays &
Booths of Local Flavor, Wine & Cheese Tasting, Raffle, Art Show,
Silent Auction, Hero's Memorial Wall and Casino
- 1PM - MIDNIGHT Cash Bar Open (In Casino Tent Till 9:30 PM, Then in Barn for Dance)
- 1:30 PM Heifer Calf Pregnancy Auction on Stage in Activities Tent
- 2:00 PM Working Cow Horse Event Begins in Arena
- 2:30 PM Style Show on Stage in Activities Tent
- 4:30 PM Silent Auction Closes
- 5:00 PM Evening Meal
- 6:30 PM Evening Program
Live Auction
- 8:00 PM Jo Dee Messina Concert
- 9:30 PM-MIDNIGHT Dance to High Horses in Calving Barn