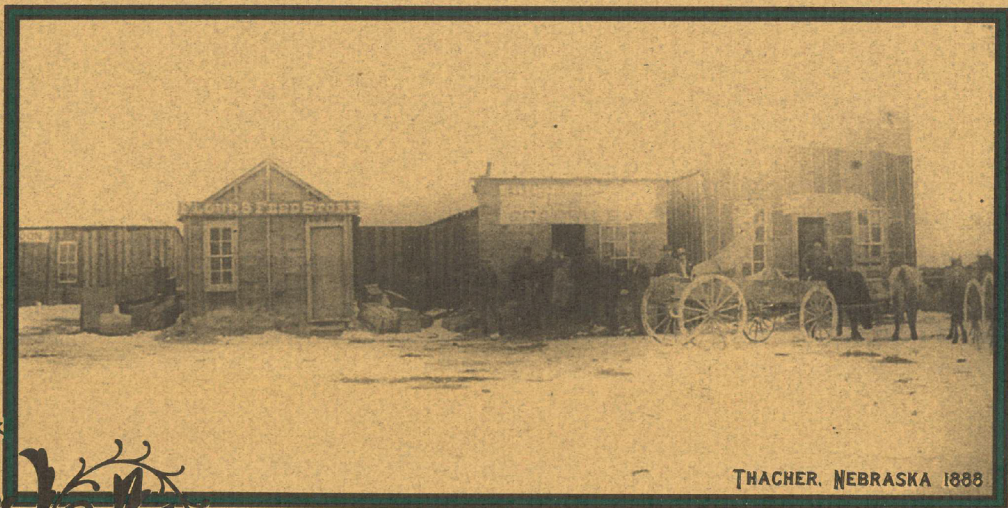


CATTLEMEN'S BALL OF NEBRASKA  
PRESENTS

# NIOBARA RIVER RENDEZVOUS

THACHER CATTLE CO.  
VALENTINE, NEBRASKA



THACHER, NEBRASKA 1888

JUNE 2, 2001

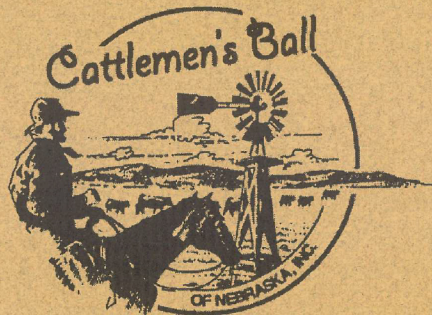


# WELCOME...

Hello and welcome to the 2001 Cattlemen's Ball of Nebraska!

Today is the culmination of months of hard work for many people and you know who you are! Thank you to everyone who helped in any way to make this special day happen. Whether you gave a little time or countless hours, a few dollars or much more, please know how very much your contributions are appreciated. We are lucky to live in a community where there are so many talented and selfless people, and although we can not name everyone, your gifts have meant a lot in putting together this worthwhile event. Now it is time to relax and enjoy all that today has to offer.

Thank you again for joining us!



*Carolyn Tehrani and Glee Swanson  
Event Co-Chairmen  
2001 Cattlemen's Ball*

## YOUR HOSTS OF THE 2001 CATTLEMEN'S BALL

Thacher Cattle Co.

*Don & Sandra Ormesher*

*Mark & Kami Ormesher, Brandon, Tyler, Nicholas & Trevor*

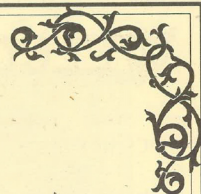
### BEEF TIPS & GRAVY

One in every five jobs in private enterprise is related to agriculture and agribusiness.





# COMMITTEE CHAIRS



## *Grounds*

Jim VanWinkle  
Gary Swanson

## *Evening Meal*

Tim Henderson

## *Trail Boss Brunch*

Jim & Ginny Lee  
Bob & Mary Kay Gustafson

## *Champagne Reception*

Marsha & Ron Bauer

## *General Store*

Vicky Cumbow  
Gina Keller  
Carol Leonard

## *Live Auction*

Mike & Linn Baxter

## *Silent Auction*

Cherryl Lovejoy

## *Activities*

Duane & Lisa Bellin

## *Art Show*

Bob & Delia Stetter

## *Style Show*

Joyce Simmons  
Donna Keenan

## *Evening Entertainment*

Bob Mulligan

## *Casino*

Matt & Carmen Miles

## *Concessions*

James Friesen  
Valentine Jaycees

## *Bar*

Gary Sadi

## *Pickup Raffle*

Doug Crouse

## *Golf Tournament*

Don Shephard

## *Underwriting*

Bob Gustafson

## *Secretary*

Jan Lailman

## *Treasurer*

Pat Neujahr

## *Tickets*

Dean Jacobs

## *Publicity*

Kris Harvey  
Ronna Morse

## *River Activities*

Rodney Verhoeff

## *Indoor Decorations*

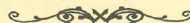
Kay Lee

## *Outdoor Decorations*

Pam McCormick

## *Beef Display*

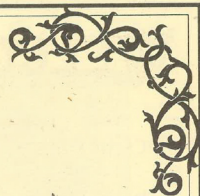
Ron Bauer  
Ronna Morse



**BEEF TIPS & GRAVY** U.S. Cattlemen produce 24.9% of the world's beef supply with less than 10% of the world's cattle population.



# COMMITTEE CHAIRS



## *Grounds*

Jim VanWinkle  
Gary Swanson

## *Evening Meal*

Tim Henderson

## *Trail Boss Brunch*

Jim & Ginny Lee  
Bob & Mary Kay Gustafson

## *Champagne Reception*

Marsha & Ron Bauer

## *General Store*

Vicky Cumbow  
Gina Keller  
Carol Leonard

## *Live Auction*

Mike & Linn Baxter

## *Silent Auction*

Cherryl Lovejoy

## *Activities*

Duane & Lisa Bellin

## *Art Show*

Bob & Delia Stetter

## *Style Show*

Joyce Simmons  
Donna Keenan

## *Evening Entertainment*

Bob Mulligan

## *Casino*

Matt & Carmen Miles

## *Concessions*

James Friesen  
Valentine Jaycees

## *Bar*

Gary Sadi

## *Pickup Raffle*

Doug Crouse

## *Golf Tournament*

Don Shephard

## *Underwriting*

Bob Gustafson

## *Secretary*

Jan Lallman

## *Treasurer*

Pat Neujahr

## *Tickets*

Dean Jacobs

## *Publicity*

Kris Harvey  
Ronna Morse

## *River Activities*

Rodney Verhoeff

## *Indoor Decorations*

Kay Lee

## *Outdoor Decorations*

Pam McCormick

## *Beef Display*

Ron Bauer  
Ronna Morse

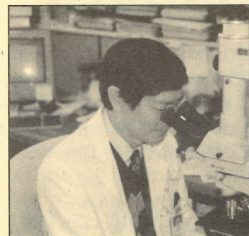


**BEEF TIPS & GRAVY** U.S. Cattlemen produce 24.9% of the world's beef supply with less than 10% of the world's cattle population.



# UNMC EPPLEY

## Cancer Center



Unfortunately, cancer is a disease that does not discriminate. It impacts men, women, and our children as well as the elderly. Whether it has reached a friend, a family member, a neighbor or themselves, most Nebraskans have been touched by cancer.

More than 7,300 new cases of cancer will be diagnosed in Nebraska in 2001 alone. Because of these large numbers and the statistics, Nebraskans must take a more active role in working toward better diagnosis, treatment and prevention of these diseases.

As a leader in cancer research and cancer care for more than 30 years, the UNMC Eppley Cancer Center combines patient care, biomedical research and education programs for cancer patients, their families and the public.

The UNMC Eppley Cancer Center is both nationally and internationally recognized as a National Cancer Institute designated clinical cancer center — one of only 60 NCI-designated cancer centers in the country. In fact, people from all 50 states and 19 foreign countries have come to our cancer center in search of treatment and hope.

Fund raising events such as the Cattlemen's Ball are very important in the quest for information about the puzzling diseases of cancer. The "Cattlemen's Cancer Research Grant" allows young investigators to pursue new, innovative ideas. It also allows established scientists to change directions in their research to pursue fresh, less-traveled avenues of investigation. Although beginning new research costs a great deal of money it is often the new, innovative ideas that lead to important breakthroughs in cancer research. It is obvious that these new research projects are fundamental in reaching our goals in the war against cancer.

Last year's ball raised \$104,000 for cancer research at the UNMC Eppley Cancer Center. These monies will be used to help fund a multi-investigator translational research program. We asked our investigators to form collaborations of basic and clinical scientists and develop a research program that would address important problems in specific cancers including breast cancer, prostate cancer, lymphoma and leukemia. Through these collaborative research programs we hope to identify new treatments for those diseases.

Nebraskans should be proud of the research being done at the UNMC Eppley Cancer Center. While tremendous progress has been made in our fight against cancer, there is much work yet to be done. In order to ensure our success in battling these diseases in the future everyone must help in funding research. People can do so by participating in important events such as the Cattlemen's Ball or even by making personal donations to the cancer center.

We have these diseases on the run and we must keep chasing them...until they are no longer a major threat to the health of Nebraskans.



Kenneth H. Cowan, M.D., Ph.D.  
Director, UNMC Eppley Cancer Center and  
Eppley Institute for Research in Cancer and Allied Diseases



# THACHER CATTLE CO.

Welcome to the Cattlemen's Ball 2001! The Ormesher families are excited to be hosts for this year's event. It is a unique opportunity to raise funds for the Eppley Cancer Research Center and to celebrate the cattle industry in Nebraska. Join us in reliving the days of the wild west to the present day of this area of the Sandhills. This is going to be a fun day, so join in and enjoy the hospitality.

## ORMESHER FAMILY HISTORY:

Alice Ormesher, widow of Henry Sr., packed up her family and left Wigan England to come to America "for a better life" in 1883. In 1884, on their way to Oregon, they stopped at Thacher to doctor the children as they had come down with the measles. They were very impressed with the area and decided to stay.



The Brenton Family of Mundeline, Ill., includes Jackie (Ormesher) Brenton and Ben Brenton, PhD, and their children: Brooks, Cassandra and Brett.

In 1903, Henry Jr. took out his first homestead for \$14.00. He married Julia DeNaeyer in 1907. Julia's parents were from Belgium and came to Cherry County in the year of her birth, 1886. The couple homesteaded near Arabia. Two children were born to them, Raymond and Thelma. Around 1914, they built their home at the current ranch location, which was the site of the old railroad town of Thacher. Raymond married Grace Beman in 1931 and they had two children, Phyllis and Donald. Donald married Sandra Suhr in 1959 and returned to the ranch after graduating from the University of Nebraska. They have three children; Jacqueline, Susan and Mark. Mark also returned to the ranch after graduating from the University of Nebraska and in 1990 married Kami Sadi. They have four sons; Brandon, Tyler, Nicholas and Trevor.

The ranch was incorporated under the name of Thacher Cattle Company in 1990. We have continued the tradition of a family cow-calf ranch.



Hosting the Cattlemen's Ball is the Ormesher Family: Don and Sandra, with Kami (Sadi) and Mark and their sons: Brandon (9), Nicholas (4), Trevor (1) and Tyler (7).



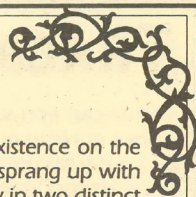
The Ries Family of North Platte, Ne., includes Susan (Ormesher) Ries and Steve Ries and their daughters: Sloan and Stacia.

**BEEF TIPS & GRAVY** 75% of wildlife of the wildlife habitat in the 48 contiguous states is on private lands.



# THACHER CATTLE CO.

(CONTINUED)



## THACHER HISTORY:

In the early spring of 1882, a railroad camp that resembled a small frontier town came into existence on the east side of the Niobrara river about four miles east of the present site of Valentine. A tent town sprang up with eating shacks, saloons and a store. The "Big Cut" took more than a year to complete and was really in two distinct camps - Broom's camp on the north, and Brown's on the south, named for the men who had the contracts for opening the cut.

The spiritual welfare of the people, even at that early date, was not entirely neglected. Chaplain McAdams, a protestant clergyman at the Post held regular services there and Father John Smith, pastor at O'Neill since 1878, celebrated Mass at both camps and at Fort Niobrara. There was even five weeks of school for the youngsters, taught by a young man who had drifted in seeking his fortune in this new country.

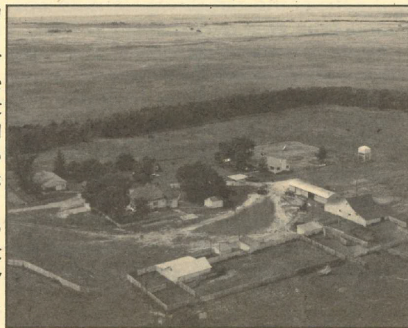
From this camp also came 300 votes that were a big factor in the reelection of Congressman E.K. Valentine, for whom Valentine was named. The election was held at Deer Park Hotel, a road house across the Niobrara river west of the fort.

The Donohers, Peter, 1843-1894, and Mary, 1837-1907, with their children had moved west as the railroad was being built. An enamelware sugar bowl and cream pitcher that were used in the tent restaurant that Mary Donohoe operated while her husband was working on the railroad was donated to the Cherry County Museum. The family moved to Valentine and opened the Donohoe Hotel when the railroad bridge was completed.

Mr. Donohoe, born in Massachusetts, migrated as a small boy to Wisconsin. He served in the Civil War and was held prisoner at Andersonville and Cahoby for seven months. In 1865 he married Mary Collins and had four children; Catherine, 1866-1944, Peter, 1868-1900, Will and Ann "Wren", 1875-1954. Will was a doctor in Salt Lake City at the time of his mother's death. The others were buried in Mount Hope Cemetery.

In the late summer of 1882, the railroad track was laid to Thacher, three miles east of the camp, and named for J.M. Thacher, post trader at Fort Niobrara. A section house, a large depot and stockyards were built. At times, cattle were lined up for five miles waiting to be shipped.

William Taylor recalls stories told to him by his father, John L. Taylor, of the early days. A depot agent lived above a saloon. When shooting started below and bullets were coming through the floor, the man put his family



*Thacher Cattle Co. headquarters near Valentine.*



**BEEF TIPS & GRAVY** It takes an American just 40 days to earn enough to pay for his or her food supply for the year, compared to 129 days to earn enough money to pay for federal, state and local taxes for the year.

# THACHER CATTLE CO. (CONTINUED)

on a cast iron stove for safety. Two dance hall girls were shot and killed in a saloon brawl. The fence around their graves is now gone.

John remembered when he was small of seeing two men dig up the grave of a cowboy who was buried near the Henry Ormesher ranch. His saddle, spurs, gun and other valuables were reported to be buried with him, but nothing was found.

Another tale was of a man who shot and killed his cousin. A letter from R.R. Greenland to Catherine Donohoe tells about the killing of Andrew Bartlett. He was cook for Greenland's outfit. They were told not to stay overnight in Thacher, but the cattle were shipped out late. Greenland bedded down with his gun under his head. Andy got the gun without Greenland knowing it and gave it to his cousin who had argued with a gambler over a woman. The cousin was waiting outside for the gambler to come out. Andy was the first one out. He was killed and buried there.

One of the early bridge-tenders was George Cyphers, who came from New Jersey to Nebraska in 1878. He and Kittie Wall were married in 1882. Her widowed father, Etheldred Wall, had settled near the mouth of the Niobrara with three children. Soon after George and Kittie moved to Valentine his relatives started arriving. Two brothers, Mark and Sam Cyphers, and his sister's son, Mark Stewart, became long-time and well-known citizens of Valentine. Kittie died in 1928 and George followed in 1930. Their children were Alice, who married Ralph Brosius, and Clarence who married Nettie Grooms.

It was the duty of the bridge watchman to check the bridge for fire after every train passed over. There were barrels of salt water placed on the bridge to be used as fire extinguishers. The train "fired-up" in order to make the steep climb. Push engines were kept on a side track at the foot of the hill until they decided it would be more economical to take a half-train up at a time. After 25 years, the railroad built a bridge 65 feet higher.

The first to be buried in the Taylor Cemetery, T33 R27 at Thacher, was John Hollis Taylor in 1901. The other six graves are those of young Taylor children.



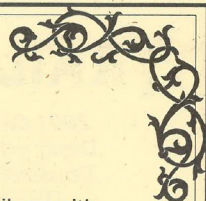
*Building Highway 20 in the 1930's*

"An Early History of Cherry County"  
"The Old Town," Newspapers & Letters at the Museum  
Winona Freed and William Taylor

**BEEF TIPS & GRAVY** Cattle consume less than two-tenths of 1 percent of all water used in the United States.



# ART SHOW



Carrie Bergen.....	Henderson, Nebr. ....	Oil
JoAnne Bird. ....	Brookings, S.D. ....	Acrylic
Bryan Bortnem/Catherine Hoss.....	Rutland, S.D. ....	Scrimshaw/Pottery/Gold & Silversmith
Bob Coonts.....	Ft. Collins, Colo. ....	Collage
Linda Egle. ....	Thedford, Nebr. ....	Bronze
Michael Hagel.....	Omaha, Nebr. ....	Acrylic
Wendy Hall.....	Ashland, Nebr. ....	Oil/Acrylic
John Lopez.....	Rapid City, S.D. ....	Bronze
Keith Lowry.....	Kearney, Nebr. ....	Oil
Delmar Pettigrew.....	Kearney, Nebr. ....	Bronze
Martha Pettigrew.....	Kearney, Nebr. ....	Bronze
J.F. Policky.....	Lisco, Nebr. ....	Oil/Bronze
Kathy Sigle.....	Spearfish, S.D. ....	Watercolor
Norma Stevens.....	McCook, Nebr. ....	Watercolor/Pen & Ink
Paul & Linda Szabo.....	Mission, S.D. ....	Gold & Silversmith
Marion Toillion.....	Spearfish, S.D. ....	Watercolor/Oil
Richard Tucker.....	Scottsbluff, Nebr. ....	Bronze
Beth R. Turner.....	Kearney, Nebr. ....	Metal Sculpture
C.W. Warden.....	Kerrville, Tex. ....	Bronze
Jim Whartman.....	Hemingford, Nebr. ....	Oil
Gary Wickett.....	Valentine, Nebr. ....	Steel Sculpture
David Young.....	Kearney, Nebr. ....	Bronze

*The Cattlemen's Ball of Nebraska Art Show is featuring 22 artists from four states who are showing their talents in various mediums. The Art Show opens at 10 a.m. for the Trail Boss ticket holders and 1:00 p.m. for the Top Hand ticket holders. It will close at 7:00 p.m.*

*The artwork displayed is for sale and can be purchased directly from the artist. In addition, each of the artists have donated an item to either the live, silent, or brunch auctions or made cash donations.*

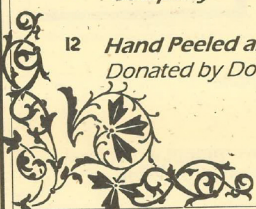
*Split Rail Fence in the Art Show courtesy of Ohlmann Building Center, Valentine*



**BEEF TIPS & CRAVY** Approximately 1.1 billion acres in the U.S. are classified by the government as ag land. More than 85% is unsuitable for crop production. Cattle convert this land into a goldmine of nutrients.

# TRAIL BOSS BRUNCH AUCTION

1. **2001 Cattlemen's Ball Commemorative Silver Belt Buckle**  
Designed by Kerri Votaw Kliewer of KVK Jewelry Designs ~  
*Donated by KVK Jewelry Designs, Henderson, Nebr. & Valentine Feed Service-Purina, Valentine, Nebr.*
2. **"Late Winter" Collector Print #392/500** Painted by Dino Cornay ~  
*Donated by Lock, Stock and Barrel, Valentine, Nebr.*
3. **"First Frost" Gicl'ee** ~ *Donated by JoAnne Bird, Brookings, SD*
4. **1886 Winchester Rifle** - Limited Edition 45-70 light rifle, gold plated and engraved ~  
*Donated by Lock, Stock and Barrel, Valentine, Nebr.*
5. **"Native Pots and Baskets" Oil painting** ~ *Donated by artist Carrie Bergen, Henderson, Nebr.*
6. **"Gate Count" Custom-framed 30" x 40" print** ~ *Donated by artist J.F. Policky, Lisco, Nebr.*
7. **Chokecherry Furniture Grouping** ~ Designed and made by Kay Lee ~  
*Donated by First National Bank of Valentine*
8. **Paper Horse" Paper Collage** ~ *Donated by artist Bob Coonts, Fort Collins, Colo.*
9. **"Late Summer" Painting** ~ *Donated by artist Keith Lowry, Kearney, Nebr.*
10. **Sand Hills Golf Company Getaway** including one challenging round of golf & one night's lodging for four players ~ *Donated by the Sand Hills Golf Company, Mullen, Nebr.*
11. **"Cowpony Mutiny" Bronze Bucking Horse** ~ *Designed & donated by Herb Mignery, Loveland, Colo.*
12. **Hand Peeled and Finished Diamond Willow Floor Lamp with Oak Base** ~  
*Donated by Doug Zanders, Taylor, Nebr.*



## BEEF TIPS & GRAVY

There are nearly 23 million acres of rangeland and pastureland in Nebraska - half of which are in the Sandhills.



# TRAIL BOSS RECEPTION & BRUNCH

## SCHEDULE OF EVENTS

- 10:00 am Hors d' oeuvres in Art Show Area  
11:00 am Move to Main Tent for Brunch  
*Entertainment by Yvonne Hollenbeck, Cowboy Poet*  
12:30 pm Trail Boss Auction  
1:00 pm Gates Open - Activities Begin!

### TRAIL BOSS RECEPTION MENU

*Asti - Italian Sparkling Wine*

*Mimosas*

*Orange Juice*

*Lemon Poppyseed Demi Muffins*

*Orange Blossom Demi Muffins*

*Assorted Cheeses*

*Fresh Strawberries Drizzled with  
White Chocolate and Milk Chocolate*

*Mini Fruit Kabobs -  
Pineapple, Kiwi and Mandarin Oranges  
with Maple Pecan Cheese Dip  
and Banana Poppy Seed Dip*

*Fresh Coffee*

*Muffins courtesy of Food Services of America,  
Ocala, Fl.*

*Trail Boss Brunch  
Sponsored & Catered  
by:*



*Where the fire's always burnin'!*

**Fremont  
Grand Island  
Kearney  
Norfolk  
North Platte  
Scottsbluff**

### TRAIL BOSS BRUNCH MENU

*Fresh Mixed Greens Salad*

*served with*

*Whiskey Creek Ranch Dressing*

*Demi Loaf*

*with Cinnamon Honey Whipped Butter*

*Beef Tenderloin*

*with Hunter and Blue Cheese Sauce*

*Grilled Bacon Wrapped Shrimp*

*basted in Honey Lemon Butter*

*Grilled Vegetables*

*Sandhills Beef Barley Casserole*

*Turtle Cheesecake*

*served with*

*Chocolate Sauce*

*Ice Tea, Coffee*

*& Ice Water*

### BEEF TIPS & GRAVY

Beef is inspected by USDA government inspectors at least 4 times from gate to plate.

# TRAIL BOSSES

## GOLDEN TRAIL BOSS - \$5,000

**Nebraska Health System**  
Omaha, NE

**Pinnacle Bank**  
O'Neill, NE

**University of Nebraska Foundation**  
Lincoln, NE

## SILVER TRAIL BOSS - \$2,500

**Ainsworth Feed Yards Co, Inc.**

Ainsworth, NE

**Bill's Volume Sales, Inc.**

Central City, NE

**Fort Dodge Animal Health**

Fort Dodge, IA

**IBP, Inc.**

Sioux City, IA

**Nebraska Health System Oncology Services**

Omaha, NE

**UNMC Eppley Cancer Center**

Omaha, NE

## BRONZE TRAIL BOSS - \$1,000

**Mrs. Carl T. Curtis (Mildred)**  
Lincoln, NE

**First National Bank  
& Trust Company**  
Columbus & Norfolk, NE

**First National Bank  
of Valentine**  
Valentine, NE

**First National Bank  
of North Platte**  
North Platte, NE

**First National Bank  
of Omaha**  
Omaha, NE

**Alvin & JoAnn Glasshoff**  
Gretna, NE

**Grace Mayer Insurance**  
Omaha, NE

**Henderson's IGA**  
Valentine, NE

**North Platte Feeders, Inc.**  
North Platte, NE

**Louis & Shirley Riha**  
Springfield, NE

**Saltzman Brothers  
Farm & Cattle Co.**  
Shickley, NE

**Dean & Rose Marie Sapp**  
Omaha, NE

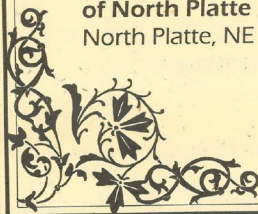
**R.L. & Pamela Bibb Swain**  
Yorktown, VA

**University Medical Associates**  
Omaha, NE

**U.S. Bank**  
Omaha, NE

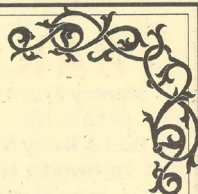
**Valentine Bancorporation**  
Valentine, NE

**Wells Fargo Bank Nebraska, N.A.**  
Omaha, NE





## TRAIL BOSS - \$500



**Adams & Sullivan Attys at Law**  
Papillion, NE

**Agrow, Inc.**  
Cozad, NE

**American Gramophone**  
Omaha, NE

**Ronald Alfs**  
Shickley, NE

**Edward & Eunice Antosh**  
Yutan, NE

**Terry Lee Beans**  
Lexington, NE

**Donald & Nancy Bell**  
Norfolk, NE

**Dr. Vincent & Vicki Bjorling**  
Scottsbluff, NE

**Blue Cross Blue Shield of Nebraska**  
Omaha, NE

**Brandes & Sons**  
**Roger & Sharon Brandes**  
Central City, NE

**David & Ann Bruntz**  
Friend, NE

**Dean & Bonnie Christensen**  
Fullerton, NE

**Doug & Jarolyn Crouse**  
Valentine, NE

**Cumming County Feeders Assn**  
Wisner, NE

**Keith & Susan Davis**  
Omaha, NE

**Ronald Dittmar**  
Oconto, NE

**Family Dentistry &  
Dental Hygiene, PC**  
O'Neill, NE

**J.B. & Pat Fischer**  
Valentine, NE

**Chuck & Shari Flaming -**  
**Sadle Cattle Co.**

Paxton, NE

**Sheryl Graff -**  
**Graff/Snover Ranch**  
Ainsworth, NE

**Hans Heating & A/C, Inc.**  
Springfield, NE

**Harney Realty Co.**  
Gretna, NE

**Harry Knobbe Feed Yards**  
West Point, NE

**Heimes Excavating & Utilities Co.**  
Omaha, NE

**Jim & Vicki Herzog**  
Bloomfield, NE

**Holiday Inn Express - Valentine**  
Ron & Marsha Bauer

Valentine, NE  
**William L. Hobbs**  
Ewing, NE

**Home State Bank**  
Louisville, NE

**Imperial Beef**  
Imperial, NE

**JDR Farms**  
Pilger, NE

**Gary & Lu Jessen**  
Bloomfield, NE

**Michael & Marjorie Jones**  
Omaha, NE

**Dr. Lon William Keim -**  
**Brush Creek Ranch**  
Omaha, NE

**KNEB -**  
**Marty & Barbara Martinson**  
Scottsbluff, NE

**George & Judy Kubat**  
Omaha, NE

**Ron & Nancy Kvols**  
Wisner, NE

**Kenneth & Alice Lauritzen -**  
**Lauritzen Farm**  
Weeping Water, NE

**Jim Lee Ranch**  
Valentine, NE

**Chuck & Rosie Leonard -**  
**Leonard Cattle Co.**  
Springfield, NE

**Lextron, Inc.**  
Greeley, CO



**BEEF TIPS & GRAVY** One American farmer/rancher produces enough food for 129 people —  
95 in the United States and 34 abroad.

## TRAIL BOSS - \$500

### **Manley Truck Dispatch Inc.**

Gretna, NE

### **Bud & Betty McBride**

Ainsworth, NE

### **Dr. John McCarthy &**

### **Dr. Roalene Redland McCarthy**

Omaha, NE

### **Michael McCarthy**

Omaha, NE

### **Mead Cattle Co.**

Mead, NE

### **Nebraska Land & Cattle, Inc.**

Johnson Lake, NE

### **Nielsen Fertilizer**

Weeping Water, NE

### **Bill Oakes**

Omaha, NE

### **O'Kief Attorney at Law**

Valentine, NE

### **Dolores A. Olson**

Taylor, NE

### **Duane & Kae Pavlik**

Yutan, NE

### **James & Lois Peery -**

### **Peery Investments**

Elkhorn, NE

### **Platte Valley Implement -**

### **Richard Jansen**

Gretna, NE

### **Price Waterhouse Coopers, LLP**

Omaha, NE

### **Ron Rabe- 4R Ranch**

Stuart, NE

### **John & Cheryl Ravenscroft -**

### **Three Bar Cattle Co.**

Nenzel, NE

### **Mrs. James R. Ravenscroft**

Valentine, NE

### **John & Claudia Reinhardt**

Lincoln, NE

### **Richard Walter Insurance Agency**

Shickley, NE

### **Dr. & Mrs. Joe Jeffrey -**

### **Robb Ranch**

Lexington, NE

### **Lorenze & Janice Roloff**

Louisville, NE

### **Phyllis H. Rothleuther Trust**

Kilgore, NE

### **Rudolph Auction**

Papillion, NE

### **Ivan & Doris Rush**

Scottsbluff, NE

### **Sid & Ruth Salzman**

Ainsworth, NE

### **Santin Farms**

Central City, NE

### **Thomas Schleisman**

Omaha, NE

### **Larry & Nancy Shavlik**

Bartlett, NE

### **Sibert Cattle Company**

Valentine, NE

### **Steve Simon**

Omaha, NE

### **Chris Smisek**

Yutan, NE

### **Dr. Bob & Jeanne Smith**

Norfolk, NE

### **Swanson Ranch**

Valentine, NE

### **Carolyn & Debbie Tehrani**

Valentine, NE

### **Thacher Cattle Co. -**

### **Don & Sandra Ormesher**

Valentine, NE

### **R.S. Thompson**

Omaha, NE

### **Roy & Bruni Thylin**

Omaha, NE

### **Don & Dorothy Tripp**

Omaha, NE

### **Valentine Dental Clinic**

Dick & Bob Jeffers

Valentine, NE

### **Walco International, Inc.**

Grapevine, TX

### **Washington County Bank**

Blair, NE

### **Yost Farm-John Yost**

Red Cloud, NE

### **Curtis & Mary Young**

Valentine, NE

### **William Zutavern Cattle Co.**

Dunning, NE





# BAR

If you need to wet your whistle, the bar is located in the center of the grounds. The bars and beer wagons open at 2:30 p.m. The bars will have a full line of liquor for your favorite mixed drinks including: margaritas, bloody marys, fuzzy navel, wines as well as Doc Otis, Bud and Bud Light beer. Of course alcoholic beverages will be served only to those of legal age and the bartenders will be checking ID's. Purchases in the bar can only be made with Cattlemen's Ball chips. There will be a cashier located in this tent to exchange to your money for chips. The bar will close at midnight. Enjoy yourself, but please don't drink and drive.

# CONCESSIONS

If you just can't wait for supper, there is a concession stand to satisfy those munchies. Operated by the Valentine Jaycees and other volunteers, the concession stand is located in a tent in the center of the grounds. The concession stand will accept both cash and chips won in the casino. The menu includes:

Beef Slab Sandwiches  
Cactus Petals  
Ranch Fries  
Field Mice (stuffed jalapeno peppers)

Candy  
Pepsi Products  
Bottled Water  
Ice Tea & Coffee

# CASINO



For your fun and enjoyment, a Blackjack Casino is located in the West Tent along with the General Store. The casino opens at 1 p.m. and will close at 7 p.m. so volunteers can set up for the dance.

There are 20 tables of blackjack where you can try your luck at the cards. The bet limit is \$25. The casino accepts only chips. There will be a cashier located in this tent to exchange to your money for chips. If you are a winner, you will be paid in \$1, \$5, \$10 or \$25 chips, which can be spent in the General Store to purchase souvenirs and other items from the vendors. They can also be spent at the concession stand for food and drink or at the bar, if you are needing a cold one. And, if you're not so lucky in cards, remember, the money goes to a good cause: cancer research!

**BEEF TIPS & GRAVY** Beef is "nutrient dense" since it provides 4 essential nutrients. Those are: iron, zinc, all the essential amino acids, vitamin B-12 and niacin.

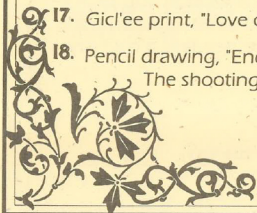
# SILENT AUCTION

LOCATED IN THE GENERAL STORE/CASINO TENT.

BIDDING IN THE SILENT AUCTION IS FROM 1-4 P.M. WRITE YOUR BID ON THE PRINTED FORM WITH THE AUCTION ITEM.

1. Guided Fishing Expedition for 2, includes lodging & meals ..... *Merritt Resort & WatersEdge Restaurant-Valentine, NE*
2. "Buffalo Hunt" gourd, painted and hand-carved. .... *Bryan Bortnem/Catherine Hoss-Rutland, SD*
3. Handcrafted silver bridle bit with Thacher Ranch brand,  
Bill Eich, artist. .... *Bill Eich-Geneva, NE*
4. Limited edition bronze sculpture - "Bat Wing Chaps". .... *Linda Egle-Thedford, NE*
5. Hornady 12 gauge Progressive shot shell reloader. .... *Hornady Manufacturing- Grand Island, NE*
6. Framed limited edition print, "Bobwhite Surprise" ..... *Michael Hagel-Omaha, NE*
7. Eight 8 oz. Filet Mignon Steaks, personally selected, cut & aged. *Peppermill Restaurant-Valentine, NE*
8. Framed print, "Study of Three". .... *Wendy Hall-Ashland, NE*
9. "Texas Longhorn" - longhorn head in bronze. .... *John Lopez-Rapid City, SD*
10. Woven gift basket with crystal jelly jar and assortment of  
Annie's award-winning homemade jam & jellies ..... *Annie's Jellies-Valentine, NE*
11. Lodging at Valentine's Trade Winds Lodge, 2 nights. .... *Trade Winds Lodge-Valentine, NE*
12. "Red Raider" - red fox in bronze ..... *Martha Pettigrew-Kearney, NE*
13. "Prairie Icon" - sculpture in bronze ..... *Delmar Pettigrew-Kearney, NE*
14. Dental Tooth Whitening Session for Gentleman. .... *Valentine Dental Clinic-Drs. Dick & Bob Jeffers-  
Valentine, NE*
15. "Cardinals", Framed print. .... *Kathy Sigle-Spearfish, SD*
16. Six month Membership for 2 to Health & Fitness Center. .... *The Body Image, L.L.C.-Valentine, NE*
17. Gicl'ee print, "Love of Lure". .... *Norma Stevens-McCook, NE*
18. Pencil drawing, "End of Line" -  
The shooting of Andy Bartlett, Thacher Saloon 1882. .... *Gary Wickett-Valentine, NE*

**BEEF TIPS & GRAVY** Nebraska has 1.97 million head of beef cows.





# SILENT AUCTION

PLEASE PAY FOR & PICK UP YOUR ITEM AT 5 P.M., AT THE SILENT AUCTION SITE. CASH OR CREDIT CARDS ONLY.

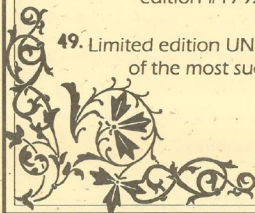
- 
19. Prairie Monarch Buckle  
(the original was designed for Kevin Costner). . . . . *Paul & Linda Szabo-Mission, SD*
  20. Framed print, "Sunflowers at Dusk". . . . . *Marion Toillion-Spearfish, SD*
  21. 1999 Nebraska Cornhuskers signature football. . . . . *Louis Riha-Springfield, NE*
  22. "Profile of Freedom" - Bald eagle in bronze. . . . . *Richard Tucker-Scottsbluff, NE*
  23. Case of '99 Vintage Red St. Croix Wine. . . . . *James Arthur Vineyards-Raymond, NE*
  24. "Cowboy Angel" - metal sculpture. . . . . *Beth R. Turner-Kearney, NE*
  25. Original oil painting . . . . . *Jim Whartman-Hemingford, NE*
  26. Getaway for 2 couples, overnight stay at a log cabin  
overlooking fairways & Minnechadua Creek, a round  
of golf for each & cart rental. . . . . *Deer Park Golf Club-Valentine, NE*
  27. Unframed print, "Cowboy Accessories". . . . . *Brenda Bruckner-Colome, SD*
  28. Unframed print, "Sunday Supper". . . . . *Ted Long-North Platte, NE*
  29. Horseshoe, Spur & hand-braided Iron Floor Lamp  
with hand-made rawhide shade. . . . . *Nelsen Furniture, Inc.,-Valentine, NE*
  30. Fine Art Vessel, one of a kind, hand-thrown clay, Raku fired. . . . *Pat Schemmer Studio-Valentine, NE*
  31. Leather-crafted desk set with letter holder & clock, designed  
& hand-tooled by artist. . . . . *Merle Paxson-Valentine, NE*
  32. Framed & Mounted collection of Arrowheads. . . . . *Antiques, Et Cetera, Phyllis Rothleutner-Kilgore, NE*
  33. Western Art Print, "Prairie Wind II",  
Framed & signed by Jeremy Daniels, artist. . . . . *David & Ann Bruntz-Friend, NE*
  34. Photograph of Ft. Niobrara Longhorn Drive, "Ghost Rider",  
Mary Mercure, artist. . . . . *Mary Mercure-Valentine, NE*
  35. Photograph, "Niobrara's Three Bridges", framed & matted. . . . *Doug Ballard-Valentine, NE*



**BEEF TIPS & GRAVY** 7.4 million commercial cattle are processed in Nebraska annually.  
This represents 20.5% of the U.S total.

# SILENT AUCTION

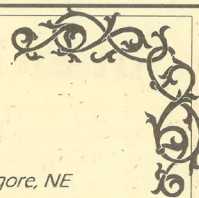
36. Embroidered Jacket with Cattlemen's Ball Insignia. .... *Keller's Custom Embroidery-Johnstown, NE*
37. Hand-tooled leather & suede fringed pillow -  
Winner of Nebraska Land Days Art Show Award. .... *Joyce McNeil-Stapleton, NE*
38. Gift Basket with bath products & CD - "Ambience Bird Song". .... *Chip Davis/American Gramophone-Omaha, NE*
39. Nebraska 2000 College World Series Photograph. .... *Louis Riha-Springfield, NE*
40. Framed & matted, black & white photo print of Cherry County  
Cattle Drive, by artist Bob Thompson. .... *Plains Trading Co., Valentine, NE & In Image  
Photography - Bob Thompson, Elkhorn, NE*
41. "Got Yer Horse", framed & matted print #60/500,  
by S.D. artist, Doug Krogman. .... *Assman Implement-Mission, SD*
42. Dental Tooth Whitening Session for Lady. .... *Valentine Dental Clinic, Drs. Dick & Bob Jeffers-  
Valentine, NE*
43. Hand-painted Child's Chair, "Ladybug" by Lee Ann Wyatt. .... *Raspberry Lane, Lee Ann Wyatt-Chadron, NE*
44. Bronze sculpture "Remains of a Dynasty",  
limited edition #15/20 by Thedford artist, Linda Egle. .... *Purdum State Bank-Purdum, NE*
45. Natural floral wreath, by designer, Sheri Risseuw,  
incorporating rope used by 2000 NFR cowboy, J.D. Crouse, . . . *Every Bloomin' Thing-Omaha, NE*
46. Two hand-made woven rugs. .... *Ellen Froning, Sparks, NE*
47. Authentic ranch rope vessel, fashioned pottery style,  
by Marilyn Storms. .... *Marilyn Storms Western Ware-Valentine, NE*
48. In Memory of Harry C. Coble, Legends Mixed Media Sculpture,  
"Busten a Herd Quitter", Christopher Pardell, artist,  
edition #1792/2500. .... *Jim & Lisa's Collectibles, Jim & Lisa Coble-Hendrix,  
Doris Coble-Mullen, NE*
49. Limited edition UNL Cornhusker football, commemorating one  
of the most successful eras in college sports. .... *Leonard Cattle Co., Chuck Leonard-Springfield, NE*



**BEEF TIPS & GRAVY** In 2000, Nebraska ranked first in the U.S.  
in commercial red meat production with a total of 7.1 billion pounds.



# SILENT AUCTION



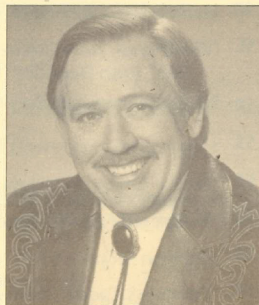
50. Hand-crafted Stained Glass jewelry box ..... *Nola Moosman-Valentine, NE*
51. Weathered, wood-framed & double matted picture, "Friend or  
Foe", Ruth Deoudes - artist; Floyd Bryant - framer. .... *Bryant's Rustics, Floyd Bryant, Kilgore, NE*
52. Framed & matted print, "Owyhee" Desert Horseman" ..... *Valentine Pharmacy, Valentine, NE*
53. Hand-quilted Red Heart Doily quilt. .... *Piecemakers Quilt Guild, Valentine, NE*
54. Native American Lakota Feather headdress. .... *Anonymous Donor*
55. "Feathered Friends", Framed print. .... *Kathy Sigle-Spearfish, SD*
56. Sightron Scope - 4.5 X 14 X 42 millimeter. .... *Nelson and Sightron, Arcadia, NE*
57. "Cowboy's Caddy", limited edition photograph by Mark Adamson  
#1/50, suede matted and framed. .... *Adamson Studio-Valentine, NE*
58. "Mr. Val" & "Miss Cherry", One of a kind resin & cloth dolls,  
designed by Cody Foster. .... *Back Porch Friends-Valentine, NE*
59. Pearson headgate, original automatic. .... *Pearson Livestock Equipment-Thedford, NE*
60. Montana Silver Button Cover Set with matching earrings..... *Lancaster Livestock Supply-Cody, NE*
61. Gift Basket with bath products & CD - "Ambience Bird Song" ..... *Chip Davis/American Gramophone-Omaha, NE*
62. Hand-crafted maple, woven Longaberger basket. .... *Keri Adamson-Kilgore, NE*
63. "Genuine Nebraska" Collection: book, "Nebraska-Under a Big Red  
Sky" by Joel Satore; book, "Nebraska-Bringing Our Heritage Into  
the 21st Century"; 2 polo shirts; 1 brief case; 2 tin mugs & 2 pins . *Nebraska Division of Travel & Tourism*
64. Hand-crafted, custom fitted, leather dress boots with brand inlay  
& special stitching, by Kyle Rosfeld, bootmaker. .... *Lew Johnson, Ted Ormesher & S. Rourke Springer,  
CPA's, Dan Publowl, Tax Preparer-Valentine, NE*
65. National Championship football, autographed by Nebraska's  
Heisman Trophy winners, Johnny Rodgers & Mike Rozier. .... *CT Cattle Co-Chris Timmerman, Oklahoma City, OK*
66. Breeding Service for 1 Mare to 1997 Black & White Overo Stallion SKM Rio Amigo . . . *Duane & Lisa Bellin, Valentine, NE*
67. "The Next Generation" by Joe Heins #139 /250. .... *Bill & Ellen Sitz, Burwell, NE - Pfizer Animal Health*

# JOHN CONLEE

John Conlee is a lot like the songs he sings. He is a gifted entertainer who's not into the glitz and hype of the entertainment world. He lives with his wife, Gale, and three children, Rebecca, Jessica and Johnny. During the past two decades, John Conlee has achieved a level of success that he has sustained by simply being himself and by making records that the listening public can relate to. He prefers to spend his "off the road" time working on his 32 acre farm outside of Nashville, or engaging in his woodworking and gunsmithing hobbies.

Born and raised in Kentucky farm country, John Conlee began his crusade to save the family farm system several years ago, performing a concert in Omaha, Nebraska in June 1985 as a benefit for the National Farmers Organization. John Conlee has since been part of 9 Farm Aid concerts, which have raised 13 million dollars to aid the family farmer.

John Conlee's success began in the late 70's with such hit songs as "Rose Colored Glasses", "Back Side of Thirty", "I Don't Remember Loving You", and "Common Man". All of Conlee's hits have that unmistakable common thread - that unique voice. Overall, there have been 29 single releases throughout the years with 26 of them charting in the top 20 or better. Eight of those 26 have reached the coveted No. 1 spot on the national country charts.



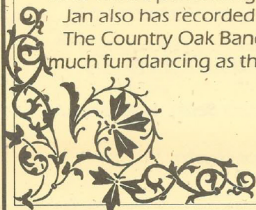
## MIKE NUSS & THE COUNTRY OAK

Since 1975 when Mike and Jan Nuss started the Country Oak band, it's main goal has been to provide the best in country and classic rock music to it's audiences in the West Nebraska - Eastern Wyoming area.

Mike and Jan are from Minatare, Nebraska and though the group has had some personnel changes over the years, it has been said that this latest edition of Country Oak is the best ever. Other band members include: from Chadron, Nebraska, Rick Bahr on bass and from Mitchell, Nebraska, Scott Ferneau on drums. All four band members sing and their vocals and harmony are key to their sound. The group has been fortunate to open for several big acts including "Riders in the Sky" who will be performing at this year's Cattlemen's Ball.

Jan also has recorded an album of original music entitled, "Never Let Go Of Your Dreams".

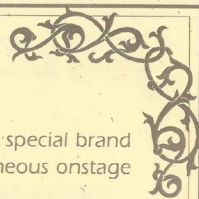
The Country Oak Band is excited to be a part of this year's Cattlemen's Ball and sincerely hopes that you will have as much fun dancing as they do playing for you!



**BEEF TIPS & GRAVY** Beef producers are committed to producing safe, wholesome beef by using quality control practices recommended by the Beef Quality Assurance program.



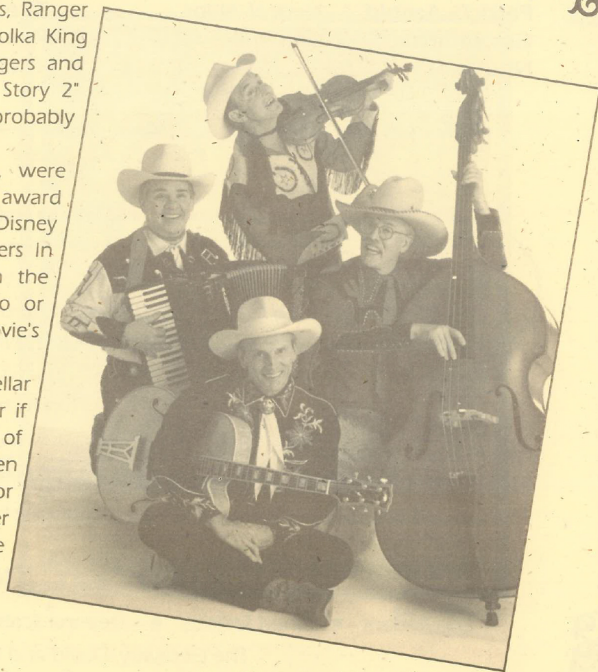
# RIDERS IN THE SKY



Western Music Association Group of the Year, Riders In The Sky have been bringing their own special brand of western entertainment to fans around the world for over 20 years. Famous for their spontaneous onstage antics as well as their perfectly blended harmonies, Ranger Doug, Woody Paul, Too Slim and Joey the Cowpolka King keep the memory of legendary cowboys Roy Rogers and Gene Autry alive and well in America. As "Toy Story 2" director John Lasseter sums it up, "These guys are probably the best in the world at the classic cowboy sound."

In February of this year, Riders In The Sky, were presented with the Best Musical Album for Children award at the 43rd annual Grammy Awards, for their Walt Disney Records release, "Woody's Roundup featuring Riders In The Sky". They also received a nomination in the category of Best Country Performance by a Duo or Group with Vocal, for that song from the movie's soundtrack.

If you're a fan of the Old West, good comedy, stellar harmony or "mighty fine" family entertainment - or if you simply have a pulse - and you haven't heard of Riders In The Sky, you won't believe what you've been missing. If you're a Riders In The Sky novice or established Saddle Pal, we needn't say more. Either way, expect the west from Riders In The Sky ... it's the Cowboy Way!



**BEEF TIPS & CRAVY** Nebraska has the top 3 beef cow counties in the U.S. The #1 cow county is Cherry County with nearly 170,000 cows. Holt County is #2 with 113,000 and Custer County is #3 with 101,000.

# STYLE SHOW

## *CLOTHING AND ACCESSORIES PROVIDED BY:*

**Patricia Arnold** — Nenzel, Nebr.  
**Gift Solutions** — North Platte, Nebr.  
**Nouveau** — Louisville, Nebr.

**The Manuel Collection** — Irvine, Calif.  
**Patricia Wolfe** — Smithville, Tex.  
**Young's Western Wear** — Valentine, Nebr.

## STYLE SHOW MODELS

Patricia Arnold \* Melahie Haley \* Kami Ormesher  
Jarolyn Crouse \* Sandi Ormesher \* Glee Swanson  
Aimee Blauvelt — Miss Chadron 2000-2001 \* Abby Clark — Miss Rodeo Cherry County 2000  
Ricki Cornish — Nebraska Miss Supreme Queen for Starburst USA National Pageant  
Leah Farmer — Miss Burwell 2000 \* Lindy Nicholson — Miss Rodeo Nebraska 2001  
Lindy Quaney — 2001 Southwest Nebraska Rodeo Queen  
Lynn Welker — Miss Rodeo Sheridan County 2000

## ENTERTAINERS

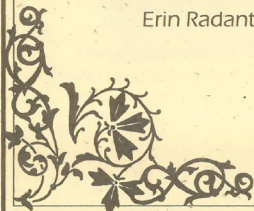
A.B. Cox ~ Mallorie Haley ~ Yvonne Hollenbeck ~ Willard Holloper

## ADDITIONAL THANKS TO:

Erin Radant ♦ Shari Sandoz ♦ Deanna Scott ♦ Linda Teahon ♦ Rita Wigington  
The Getaway, David and LaCinda Galloway



**BEEF TIPS & GRAVY** Americans on average consume 1.8 ounces of beef per day.





# MELODRAMA

The Valentine Players  
present:  
A Roberta Hintz Production

## 'END OF LINE'

### CAST

Narrator .....	Wally Bazyn
Paint .....	Jean Vackiner
Andy Bartlett .....	Jason Hanshew
Bartender .....	Woody Vosberg
Gambler .....	Tom Davis
Dance Hall Girls .....	Angie Brown
	Chris Robinson
	Pam McCormick
Cowboys .....	Bob Kilmer
	Steve Garwood
	Jerry Rhoades
Written & Directed by .....	Roberta Hintz
Piano .....	Connie Rhoades
Set .....	Dave Hintz

Showing at:  
1:00 p.m., 3:00 p.m. and 5:00 p.m.  
Each show is approximately 20 minutes



Photo by Laura Eastman

**BEEF TIPS & GRAVY** Red meat supplies significant quantities of our essential nutrients including complete protein, iron, zinc and vitamin B12 while supplying less than 25% of the fat in the average diet.

# WORKING COW HORSE COMPETITION

The contest starts at 2:30 p.m. with the trail work as the first part of the competition. The rider will enter the trail, wait for the nod from the judge to start... At a walk, cross the bridge, trot across the log ladder, lope over the log jump and come to an easy stop. Approach the gate and open with the right hand, walk through and close with the right hand, hesitate (to show your horse will stand quietly) then approach the arena gate and open with the left hand. Walk through and close with the left hand, hesitate. Walk or trot to the center of the arena facing away from the judge. Stop and wait for the signal to start the reining pattern.

Contestant will perform a prescribed reining pattern as shown, then perform prescribed cow work maneuvers.

For the cow work, each contestant, upon receiving a cow in the arena, shall hold the cow on the prescribed end of the arena for sufficient time to demonstrate the ability of the horse to contain the cow on that end. After a reasonable amount of time, the contestant shall take the cow down the fence, making at least one turn each way on the fence. The contestant shall then take the cow to an open part of the arena and circle it at least once in each direction. Horse shall keep working until judge blows the whistle. Settle your horse and then put stock in used pen.

Judges decisions are final.

*Contestants are competing for the following prizes :*

### National Finals Rodeo Tickets –

donated by Doug & Jarolyn Crouse, Valentine

### Silver Mounted Engraved Spurs –

donated by Ranchland Western Wear, Ainsworth

**Star Quilt** – donated by Sandoz Chapel of the Pines, Dave & Kay Sandoz

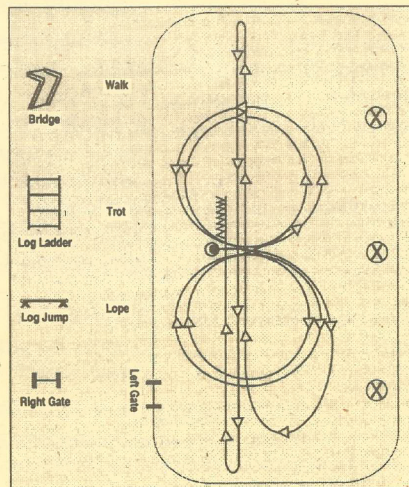
**Headstall** – donated by Harry Adams Saddlery, Kilgore

**Trophy Buckle** by Triangle Cross, Dorothy Nelson, Carter, SD –

donated by Peppermill Restaurant, Valentine

Bridge for Working Cow Horse Competition courtesy of Fullerton Lumber, Valentine

Panels for the arena courtesy of Daniels Mfg, Ainsworth & Valentine Feed Service, Valentine



**BEEF TIPS & GRAVY** One out of every four Nebraskans depends upon agriculture for employment.



# Cattlemen's Ball

*presents for your  
dining pleasure...*



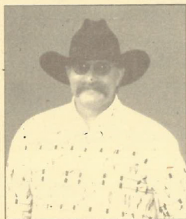
**BEEF**

IT'S WHAT'S FOR DINNER.

Nebraska-Fed  
Mesquite-Smoked Beef Brisket  
Flavorful Black Oak Sausage  
Roasted New Red Potatoes  
Ranch Beans  
Tangy Pasta Salad  
Cowboy Biscuits & Butter  
Fresh Sliced Iced Peaches  
Catered by Figure Four Traditions

Beef contains a powerhouse of nutrients including  
zinc, iron, protein and B-vitamins -  
nutrients that work as hard as you do every day!

# COWBOY CAMPFIRE



*Marty Blocker*

This activity is just a "kick-back, relax and enjoy the day" type of function! Marty Blocker of Cody, Nebraska runs "Spirit of the West" chuckwagon dinners at Nenzel, Nebraska. He and his wife Donna, have agreed to bring their chuckwagon, build a small campfire and serve coffee to our guests as they sit around the range teepees and listen to the "Vintage Cowboys" and others sing songs, recite poetry, and just tell stories. The Blockers take care of the Gillespie ranch between Nenzel and Cody. Marty has cowboeyed and ranched all of his adult life and had recited western poetry for the past four years. He considers himself a "parrot" as much as a "poet" because besides writing his own poems, he enjoys reciting the classic rhymes of both past and contemporary masters. As he straddles the ridge of "Where has the past gone?" and "What does the future for ranching hold?", he believes in clinging to the old traditions of making 'a hand' a horseback. Yet he realizes one must booger oneself up to the technology of our changing world.

"The Vintage Cowboys" are from Laramie, Wyoming. The leader of the duo is Ken Swick. Ken is formerly of Gordon, Nebraska and had a band called "Stagecoach". He plays guitar and sings, as well as writes some of his own songs. The other "cowboy" is Ted Johns, also formerly of Gordon, Nebraska. Ted works for the State of Wyoming Department of Roads and was the rhythm guitar player for "Stagecoach". He still plays rhythm guitar and now sings a bit. The Vintage Cowboys' appearance is sponsored by Young's Western Wear of Valentine.

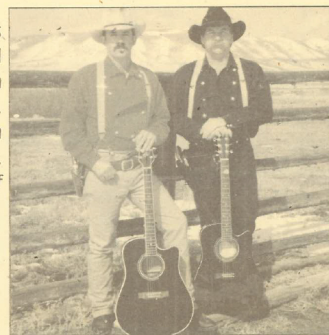
Also performing will be Janet Parkhurst of Cody, Nebraska. Janet and her family are in the ranching business. She writes about what she lives: ranch life, family life and the Sandhills. Janet began writing cowboy poetry in 1995. She is also an avid photographer.

Others helping with set-up of tents and teepee include:

Dale Miller - Brownlee

Elvin Wiley - Valentine

Roger Monroe - Valentine



*The Vintage Cowboys,  
Ken Swick (left) and Ted Johns (right)*

It takes an average of 4.5 pounds of grain to produce one pound of beef, retail weight.



# LADY WRANGLERS

The Lady Wranglers are a social and educational equine riding group interested in developing good horsemanship while supporting and promoting Cherry County. They will be performing an original drill showing the skill of both horse and rider at 2:00 p.m. and they will be assisting in parking cars throughout the day. This group of horsewomen meets once a month in the winter and weekly during the summer. They perform drills, ride in parades, participate in trail rides and sponsor a horse show. Formed in 1992, there are currently 16 Lady Wranglers ranging in age from 21 to well into the 70's.

## PICKUP RAFFLE

Here's your chance to win a brand new 2001 Dodge Dakota Sport pickup. The pickup's features include: a regular cab, 4 x 2, automatic transmission, 3.9 L V6 engine, cruise control, tilt steering wheel and air conditioning. It has a gray cloth interior with a split bench, standard AM/FM radio/cassette player, antilock brakes, Next Generation driver and front passenger air bags and a three-year or 36,000-mile bumper to bumper warranty. The Dodge Dakota has been named J.D. Power and Associates' "Most Appealing Compact Pickup" for four consecutive years. The pickup is on display in the raffle tent located near the main entrance. Tickets are available for sale for \$100 each and only 400 tickets will be sold. The winner's name will be drawn at 6:30 p.m. in the Entertainment Tent, so be sure to get yours now.

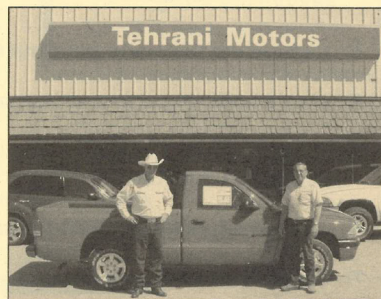


Photo by Laura Eastman

## SPORTING CLAYS

Sporting Clays are located northeast of the parking area. Shooters can purchase 50 clays for \$15/person for those who have brought their own gun and ammunition. Ten dollars of the fee will be donated to the Cattlemen's Ball. Hill's Sports Haven will have guns for rent and ammunition for sale.

The sporting clays are sponsored by Union Bank & Trust of Valentine.

## BALLOON RIDES

For the best view of the 2001 Cattlemen's Ball, see Wayne Hajak of "Flying Colors" from Tyndall, South Dakota, for a hot-air balloon ride. Wayne will be giving tethered balloon rides on the east side of the grounds for \$10 per person.\* Don't forget to bring your camera!


\*Balloon rides available only if the weather permits.

**BEEF TIPS & GRAVY** Americans spend just 10.9% of their income for food, one of the least of all countries. In India consumers must spend 51.4% of their income on food.

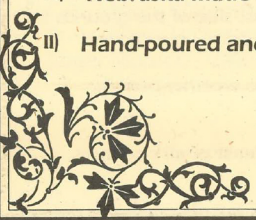
# GENERAL STORE

*The General Store will be handling commemorative items for the event participants. These can be purchased with cash, checks, credit cards or casino chips. We have a variety of new products never seen at the Cattlemen's Ball. We feel the variety and quality of items will surprise our event customers. We look forward to making this a very special event. The General Store will open at 10 a.m.*

- 1) **Cowboy Doll, "Andy Bartlett"** - designed exclusively for the Cattlemen's Ball by Cody Foster.
- 2) **Gift Baskets with Nebraska Products** in wooden trays with the Cattlemen's Ball logo hand crafted in the bottom of the tray.
- 3) **Custom made pewter pins and key chains.**
- 4) **Hand-made wooden and deer antler pen/desk sets.**
- 5) **Souvenir Photography** with "Wild Horse", "The Dance Hall Girl" or "Old West Niobrara River Rendezvous Buck Board".
- 6) **Salt-glazed pottery candles**, custom made especially for the Cattlemen's Ball.
- 7) **Handmade bird feeders** with rustic, Sandhill theme.
- 8) **Custom silk-screened t-shirts, polos, canvas bags, and caps** all for young and old alike.
- 9) **Custom embroidered polos, wind shirts, coats, caps, denim shirts, sweatshirts, sherpa fleece, fleece car blankets and gambler style hats.**
- 10) **Nebraska-made wine from Cuthill Vineyard** with custom labels especially for the Cattlemen's Ball.
- 11) **Hand-poured and hand-thrown pottery** mugs, pie plates and vases.

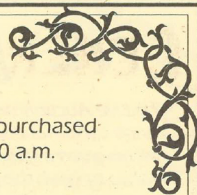


**BEEF TIPS & GRAVY** The USDA instituted a surveillance program for BSE in the U.S. cattle herd in the early 1990's. No cases of BSE (Mad Cow) have ever been found in the U.S.





# GENERAL STORE



The General Store vendors offer a variety of merchandise to choose from. These items can be purchased with cash, checks, credit cards or casino chips. The General Store vendors will be open at 10:00 a.m.

Be sure to check out the following vendors:

## **GIFT SOLUTIONS -**

Western clothing  
and jewelry

## **SCHENMER STUDIO -**

Hand-thrown raku pottery,  
carved stoneware tile, free-  
standing sculptures

## **ANNIE'S JELLIES -**

Homemade jellies from  
Sandhill fruits and berries

## **SANDHILL RANCH PRODUCTS -**

Homemade salsa, pepper  
jellies and gift packages

## **SANDHILLS BOOTS -**

Handmade boots, chaps,  
chinks - custom made for  
the perfect fit.

## **PRAIRIE WIND ARTISANS -**

Handmade and designed  
sterling silver jewelry, western  
& contemporary

## **CETAK MEATS -**

Spices, beef jerky, beef sticks-  
smoked with hickory wood in  
their own smoke-house, also  
fresh cuts of beef - frozen and  
ready to take home

## **JIM PINNEY TACK -**

Hand-braided kangaroo and  
rawhide head stalls and reins,  
hand-crafted bits and spurs



**BEEF TIPS & GRAVY** The beef sold today has 21% less trimmable fat than in the '80s and more than 40% of all beef cuts have no external fat.

# LIVE AUCTION

*The Live Auction will begin at 7:00 p.m. in the Entertainment Tent. Former World Champion Auctioneer Mike Baxter of Ranch Land Auction Service will cry the auction. Bid takers will be stationed throughout the audience. Successful bidders will be given a ticket by the bid taker and asked to provide the following information: name, address, how the buyer wishes to have the purchase announced by the auctioneer and a signature. Cashiers will be located in the vicinity so buyers can pay for and pick up the items purchased in the live Auction.*

1.) **NEW 2002 "SUPER STAR" 7' X 24' ALUMINUM GOOSENECK TRAILER**

with exclusive riveted construction for added strength and flexibility. Smooth interior design, heavy-duty gates and hinges, and diamond tread plate floors. Built like the big ones!

Donated by Wilson Trailer Co. of Sioux City, Iowa, with over 110 years of design and production experience in quality livestock trailers.

2.) **"FIRST OF THE PROSPECTS" - BRONZE SCULPTURE**

was inspired by the foaling season when horse breeders try to pick out the best of the new arrivals. C. W. "Chuck" Warden, a native Texan, is the artist. His inspiration and detailed sculpture comes from a lifetime of personal association with horses, cattle and "cow people".

Donated by First National Bank of Omaha - quality products and superior service.



3.) **"RIVER'S CHILD" - BRONZE SCULPTURE**

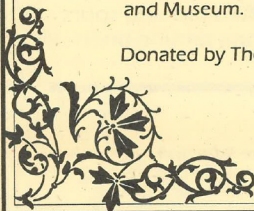
is a beautiful sculpture with a patina finish. The artist is C.W. "Chuck" Warden.

Donated by Piper Jaffray Investment Advisors/U.S. Bancorp, Omaha, Nebraska.

4.) **"EMPEROR OF THE PLAINS" - PAINTING**

captures the strength and power of the North American bison. It was one of the most important and prominent creatures of the Plains. Michael Hagel has been a professional artist for more than 30 years. In 1994, Mr. Hagel was commissioned to design and illustrate five murals for the George H. Bush Memorial Library and Museum. His limited edition prints are sold world-wide.

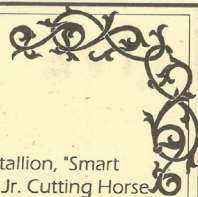
Donated by Thompson Real Estate, Tom & Pat Thompson of Bassett, Nebraska.



**BEEF TIPS & GRAVY** Some of the products we use every day come from cattle. From hide and hair we get glue, insulation, leather goods, paint brushes and sports equipment.



# LIVE AUCTION



5.) **"UNO TIG" - THREE-YEAR-OLD SORREL GELDING**

Foaled - May 11, 1998 in the state of Texas. Breeder - Timmerman & Lyons. Sired by the great stallion, "Smart Little Uno", '91 NCHA Futurity Finalist; '92 Super Stakes Champion; '92 AQHA World Champion Jr. Cutting Horse and '93 American Greatest Cowboy Champion. And out of "Amy Tig Two", one of the very few Double Bred Leo mares in existence today - shown in halter, pleasure and roping as well as used on the ranch. "Uno Tig" has been in training for one year under NCHA Hall of Fame Trainer, Tom Lyons of Grandview, Texas. This gelding would make a great horse for anyone.

Donated by Timmerman Land & Cattle Company of Springfield, Nebraska.

6.) **BEAUTIFUL HANDMADE SADDLE**

Designed and built by Harry Adams Custom Saddles. Bullhide covered Weatherly tree: 16" seat - 6 3/4" X 8" gullet, 10" fork, 3 1/2" cantle board, wood post horn, 5 year warranty from Hercules Saddle Tree of Moab, Utah. Skirting: 12-14 oz. leather from Wickett & Craig of America. Lining: 3/4" Bark tanned sheepskin. Saddle strings: 5-7 oz. Alum cured lace. Latigo: Chrome tanned - burgundy from Wickett & Craig. Hardware: Stainless Steel Dees and flank buckles. Chrome plated rope strap, flank center buckle, and stirrup hobble buckles. Stirrups: Monel covered bell bottoms, engraved by Dale Miller of Thedford, Ne. Silver: Custom made and hand engraved Sterling overlay recognition plate and conchos from Triangle Cross of Carter, SD. Carving and Stamping: Full coverage. Small basket stamp, overlain with an original rambling floral design by Harry Adams of Valentine/Kilgore, NE. Finish: Medium oil finish, hand rubbed with vegetable oil.

Donated by Community First National Banks of Nebraska.



7.) **NATIONAL FINALS RODEO TICKETS FOR TWO**

Includes a direct flight from Omaha, Nebraska or Denver, Colorado to Las Vegas, Nevada; 3 nights at the Paris Hotel and Casino or at Bally's Hotel; \$200 worth of gift certificates for either of the hotels; and tickets for 2 people to attend two of the rodeo performances on December 7, 8 or 9th, 2001.

Donated by Ainsworth Feed Yards - Bob Sears.



**BEEF TIPS & GRAVY** Some of the products we use every day come from cattle. From fats & fatty acids we get: asphalt, candles, cosmetics, crayons, deodorants, floor wax, hydraulic brake fluid, plastic and detergents.

# LIVE AUCTION

8.) **HUNTING ADVENTURE**

For you and three of your friends! Enjoy a day long adventure pheasant hunting, duck hunting, fishing or shooting sporting clays (depending on the season) at Werner Shooting Fields in Valley, Nebraska. Lunch will be provided in the spacious and comfortable lodge.

Donated by Werner Enterprises.

9.) **CATTLEMAN'S PISTOL, MODEL 1873 - 5 1/2" BARREL, 45 CALIBER AND  
CATTLEMAN'S RIFLE, MODEL 1866 - 20" BARREL, 45 CALIBER**

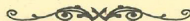
The world's finest craftsmen and artists, using the highest quality products available, have created these 24kt gold special edition firearms with only one thing in mind - YOU, the collector and investor. Edition of one.

Donated by Mike and Nancy McCarthy.

10.) **DINNER FOR 8 AT THE GOVERNOR'S MANSION**

Enjoy this meal for a party of eight at the Governor's residence in Lincoln, Nebraska. Governor Mike and First Lady, Stephanie Johanns will be your hosts for this meal and tour of their home.

Donated by The Johanns, Lincoln, Nebraska.



**BEEF TIPS & GRAVY** Beef provides 39% of the Daily Value of zinc.  
Zinc keeps you going strong by helping maintain a healthy immune system..



# ROSES

Some of the Trail Bosses and Top Hands have chosen to honor loved ones who have struggled with cancer by donating a beautiful arrangement of one dozen roses in a "Memorial Bouquet" or a "Celebration of Survival Bouquet." The bouquets will be on display at the Style Show. Each has a card telling their story. Those who purchased the roses can take their bouquets home with them. Bouquets can be collected at the end of the day.

## SERENITY PARK

The Sandhills Serenity Park is designed as a place to go for remembering, reflecting and reacquainting. The Park is located in the commons area. Four corner posts mark its boundaries and cedar gliders and tables will be available for your comfort. At night, the park will also be lit by oil lamps on the tables.

## SPECIAL MEMORIAL

Duane Pavlik, husband of Cattlemen's Ball Advisory Board Member, Kae Pavlik of Yutan, passed away recently. In memory of Duane, over \$500 will be donated to the Cattlemen's Ball for cancer research

## COWBOY'S PRAYER

O Lord, I've never lived where the churches grow;  
I've loved creation better as it stood  
That day you finished it long ago,  
And looked upon your work and called it good.

Just let me live my life as I've begun!  
And give me work that open to the sky;  
Make me a partner of the wind and sun,  
And I won't ask a life that's soft and high.

Make me as big and open as the plains'  
As honest as the horse between my knees;  
Clean as the wind that blows behind the rains;  
Free as the hawk that circles down the breeze.

Just keep an eye on all that's done and said;  
Just right me sometime when I turn aside;  
And guide me on the long, dim trail ahead —  
That stretches upward towards the Great Divide.

**BEEF TIPS & GRAVY** Nebraska ranks first nationally in live animal and meat exports totaling \$828 million.

# IN KIND & CASH DONORS

**Harry Adams Custom Saddles**

Kilgore, NE

**Dick Ballard**

Valentine, NE

**Gerry Beel**

Valentine, NE

**Steve Breuklander**

Valentine, NE

**C.J.'s Nickelodeon**

Valentine, NE

**Cherry County Hospital Ambulance**

Valentine, NE

**Cherry County Hospital**

**Cherry County Sheriff's Dept. & Volunteers**

**City of Valentine**

**Comfort Inn**

Valentine, NE

**Community First National Bank**

Valentine, NE

**Doug & Jarolyn Crouse**

Valentine, NE

**Billy Cumbow**

Valentine, NE

**Daniels Manufacturing**

Ainsworth, NE

**Emanon Extension Club**

Valentine, NE

**Farm Credit Services of America**

**First National Bank of Valentine**

Valentine, NE

**John Fisher**

Valentine, NE

**Flower Land**

Valentine, NE

**Food Services of America, Inc.**

Omaha, NE

**Fullerton Lumber Company**

Valentine, NE

**Gabelco Gold Soap Company**

Ainsworth, NE

**John Gross**

Johnstown, NE

**Jim Harms**

Valentine, NE

**Healing Arts Studio**

Valentine, NE

**Hill's Sports Haven**

Valentine, NE

**Holiday Inn Express**

Valentine, NE

**Hormel Foods**

Austin, MN

**Jordan's Fine Dining**

Valentine, NE

**KBR Rural Public Power District**

Ainsworth, NE

**Keller's Custom Embroidery**

Johnstown, NE

**KNEB Radio**

Scottsbluff, NE

**KRVN Radio**

Lexington, NE

**KTIC Radio**

West Point, NE

**KVSH Radio**

Valentine, NE

**Lady Wranglers**

Valentine, NE

**Scott & Kris Larsen**

Valentine, NE

**Lincoln Tent and Awning**

Lincoln, NE

**Monty McNaught**

Valentine, NE

**Merriman Printing & Publishing**

Pierre, SD

**Midwest Messenger**

Tekamah, NE

**Mary Mulligan, The Gallery**

Valentine, NE

**Joe Mundorf**

Wood Lake, NE

**Natural Resources**

Conservation Service

**Nebraska Beef Council**

Kearney, NE

**Nebraska Cattlemen**

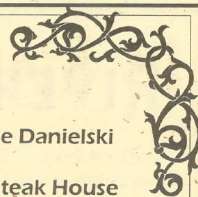
**Nebraska Cattlewomen**

**Nebraska Cornfed Beef**

**BEEF TIPS & GRAVY** Ranchers place high value on stewardship. In many cases, changes in range management can prevent pollution and correct past damage.



# IN KIND & CASH DONORS

**Nelson's Furniture**

Valentine, NE

**Niobrara Valley Consultants**

Valentine, NE

**North Star Electric**

Valentine, NE

**Ohlmann Building Center**

Valentine, NE

**Peppermill Restaurant & Lounge**

Valentine, NE

**Greg & Solveig Perrett**

Valentine, NE

**Perrett Environmental & Employees**

Valentine, NE

**Donn Petersen**

Valentine, NE

**Pinnacle Banks of Nebraska****Jim & Nancy Powell**

Valentine, NE

**Ranch-Land Western Store**

Ainsworth, NE

**Jack Ravenscroft**

Valentine, NE

**Bud & Judy Reece**

Valentine, NE

**Shirley Riha**

Springfield, NE

**Rocking Arrow Charolais**

Valentine, NE

**Janice Roloff**

Springfield, NE

**Rosebud Casino****Sandhills Cattle Association****Sandoz Chapel of the Pines**

Valentine, NE

**Seven Springs Inc.**

Long Pine, NE

**Shadley Sals Extension Club**

Valentine, NE

**Jim Shelbourn**

Lakeview, SD

**Sterling Distributing Company**

Omaha, NE

**Tehrani Motors**

Valentine, NE

**Union Bank and Trust**

Valentine, NE

**Valentine FFA Chapter**

Valentine, NE

**Valentine Teachers**

Valentine, NE

**Valentine Beverage Inc.**

Valentine, NE

**Valentine Chamber of Commerce/****Cherry County Tourism Board****Valentine Feed Service/Purina**

Valentine, NE

**Wells Fargo Nebraska NA**

Valentine, NE

**Western Oil/Mike Danielski**

Valentine, NE

**Whiskey Creek Steak House****Wood Lake Fire Department**

Wood Lake, NE

**X-Bar Ranch**

Valentine, NE

**David Young**

Kearney, NE

**Young's Western Wear**

Valentine, NE

**A SPECIAL THANK YOU!**

*THIS PROJECT WOULD NOT HAVE BEEN POSSIBLE WITHOUT THE HELP OF HUNDREDS OF VOLUNTEERS, GENEROUS UNDERWRITERS, DONORS OF CASH, PRODUCTS, TIME AND LABOR. WE HAVE TRIED TO INCLUDE EVERYONE IN THIS LIST, BUT THERE ARE BOUND TO BE FOLKS WHO EITHER SLIPPED THROUGH OR WHO PREFERRED TO REMAIN ANONYMOUS.*

*TO ALL OF YOU, MANY THANKS. IT HAS BEEN A PLEASURE AND A PRIVILEGE TO WORK WITH YOU!*



**BEEF TIPS & GRAVY** Cattle outnumber Nebraskans 4 to 1.

## RIVER TRIPS

Cattlemen's Ball participants had the opportunity to take river trips on the scenic Niobrara River as a part of the Niobrara River Rendezvous. Four river trips were organized to allow people to enjoy the beautiful scenery and variety of wildlife and birds in Fort Niobrara National Wildlife Refuge and beyond. On Friday, participants were allowed to choose between a leisurely float trip on inner tubes, another was canoeing from Ft. Niobrara National Wildlife Refuge to Smith Falls State Park and a steak cookout. Saturday morning rafting or kayaking from Smith Falls State Park to Brewer Bridge Landing was one of the options or early bird canoeing from Fort Niobrara National Wildlife Refuge to Smith Falls State Park.

## TRAIL RIDE

This morning, horse enthusiasts attending the Cattlemen's Ball were treated to a very scenic trail ride at the Schlagel Creek Ranch. This three hour ride started on the prairie going west to the canyons along the Schlagel Creek, down to the creek and then followed and crossed to the Niobrara River. At the river there was a brief stop for photos and some history. The riders then followed the Niobrara River for approximately one mile to a single file ride through cedar and Ponderosa Pine trees and up out of the canyon. Following the rim of the canyon, riders were treated to breathtaking scenery.

## GOLF

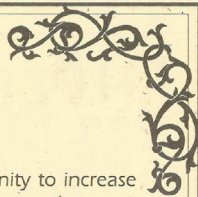
Yesterday, teams of golfers teed off to fight cancer at the annual Cattlemen's Ball Golf tournament. The tournament was held at Deer Park Country Club northeast of Valentine. The teams played 18 holes of golf in a speedy scramble tournament. Proceeds, of course, were donated to the Cattlemen's Ball for cancer research at the UNMC's Eppley Cancer Center.



**REEF TIPS & GRAVY** America's cattlemen are producing the same amount of beef from 10% fewer cows than were required 10 years ago.



# BEEF IN THE NEW MILLENNIUM DISPLAY



The Beef in the New Millennium Display is designed to give Cattlemen's Ball participants an opportunity to increase your awareness of the changes in the beef industry over the past 100 years. Throughout the Beef Display area, there are cattle, photos and information depicting some of the contrasts and explaining some of the changes that have taken place in the cattle business, range management and the ranching business in over one hundred years. In addition, throughout this program, are Beef Tips & Gravy, facts about beef and the cattle industry. Using these facts and other information on display throughout the Beef Display area, you can test your knowledge at our "Beef Wheel of Fortune" game and win some prizes.

The Beef in the New Millennium Display is a cooperative venture of the following organizations, agencies, businesses and individuals:

Nebraska Beef Council  
Nebraska Cattlemen  
Nebraska CattleWomen  
Natural Resources & Conservation Service  
Sandhills Cattle Association

Daniels Manufacturing  
Rocking Arrow Charolais, Bob Grabher & Dean Churchill  
T H Ranch, John & Clara Smith  
Valentine Feed Service/Purina

## *HERE ARE JUST A FEW CHANGES THAT HAVE OCCURRED OVER THE PAST 100 YEARS*

### **In 1901...**

Steers 3-4 yrs old when harvested  
Tougher, stringier, fatter beef  
Took 5 times the grass to get to market  
Grass was abused, over grazed,  
Wildlife was on the decline  
Refrigeration not common, fresh meat safety was questionable  
Beef purchased fresh, in bulk form  
Pot Roast takes 3-4 hrs to prepare  
Typical steak is 30% fat.  
Beef tallow important for gun powder  
Beef is expensive, not an everyday part of the diet. It is a treat.  
Beef is the preferred meat full of protein vitamins and minerals.

### **In 2001...**

Steers 12 - 18 months old when harvested  
Tender, juicy, tastier beef  
Cattle use 80% less feed to get to market  
Range resource in excellent condition  
Wildlife is at an all time high.  
Processing, refrigerated storage, and precooked items have made beef a safer  
tastier and more convenient  
Beef available fresh, frozen, precooked in many convenient and handy forms.  
Delicious precooked Pot Roasts done in 4 minutes  
Typical steak is less than 10% and easily trimmed.  
The oil/fat in a beef steak is chemically identical to that in olive oil. It can be very  
healthy and actually increase "good" cholesterol levels.\*  
Beef is affordable by everyone in the U.S. and can be enjoyed every day, but is  
still viewed as a treat.  
Beef is still the preferred meat, and healthier than ever

### **BEEF TIPS & GRAVY SOURCES:**

Nebraska Beef Council, Nebraska Ag Statistics Service, Nebraska  
Department of Agriculture, National Cattlemen's Beef Association,  
Natural Resources & Conservation Service.

\* "The Soft Science of Dietary Fat" by Gary Hawks, March 30, 2001 Science Magazine

# PSA TEST & SUNSCANNER TEST

Stop by the UNMC Eppley Cancer Center booth, located in the Art Tent, for a free Prostate Specific Antigen (PSA) test. This test includes a blood draw and is a valuable tool in the detection of prostate cancer. Results are, of course, confidential and will be mailed out following the Cattlemen's Ball. And, for you sun worshippers, there is a cancer risk evaluation questionnaire and a sunscanner test available, which shows sun damage and problem areas on the face.

## PROCEEDS FROM PAST CATTLEMEN'S BALLS

Each year, 10% of the funds raised from the Cattlemen's Ball stays in the local area where the Ball is hosted. Following is a list of the how the funds have been spent in past years.

**2000 – Haythorn Ranch – Ogallala** – \$104,00 to UNMC Eppley Cancer Center & \$11,500 to the Local Community  
\$9,000 to the Keystone Lemoyne Fire Department towards the purchase of a Zodiac Rescue Boat  
\$2,174.50 to the Keith County Hospital Authority towards the canopy on the new building  
\$2,174.50 to the Ogallala Fire Department towards rescue airbags and jaws of life

**1999 – Robb Ranch – Lexington** – \$140,000 to UNMC Eppley Cancer Center & \$17,383.43 to the Local Community  
\$5,256 to Mid-Nebraska Community Services  
\$4,000 to the Lexington Optimists Club/Rec Complex for walking track  
\$4,127.43 to the Tri-County Hospital-Oncology unit for treatment services.  
\$2,000 for two fibrulators for lake area  
\$2,000 for helmet to aid in locating people in fire.

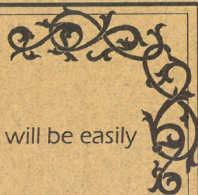
**1998 Graff/ Snover Ranch – Ainsworth** – \$95,000 to UNMC Eppley Cancer Center & \$13,000 to the Local Community  
\$2,500 Rock County Ambulance Association  
\$3,000 to Brown County Ambulance Association  
\$7,500 Brown County Hospital



**BEEF TIPS & GRAVY** It takes 1 gallon of water to process 1/4 lb. of hamburger. It takes 2,072 gallons to make 4 new tires and 39,090 gallons to manufacture a new car.



# INFORMATION



**First Aid/Ambulance Service:** Will be provided by Cherry County Hospital. Their tent will be easily located on the ball grounds.

**Shuttle Service:** Catch a free ride to and from the parking lot on one of the wagons travelling between the lots and the activities.

**Cashiers:** The treasurer and main cashier will be centrally located on the ball grounds. In addition, cashiers can be found in the General Store, the Bar and the Casino.

**Chip policy:** Chips can be purchased from any of the cashiers in denominations of \$1, \$5, \$10 and \$25. These are the only form of tender that can be used in the Bar and Casino. The Concession Stand and General Store will also accept chips, as well as cash, Visa or Master Card.

**NOTE:** Chips may not be used for the auctions or art show, and can not be redeemed for cash.

**Table Decorations:** The birdhouse table decorations used for the evening meal will be available for sale following the meal by contacting Indoor Decorations Chairman Kay Lee.

## SOMETHING TO CONSIDER:

Here are just a few facts regarding our hard-working grounds crew: Physical preparation of the site for today takes over five full days. Remember, before this week, there was nothing here but acres and acres of native grass!

Now there are 6 tents ranging in size from 30' x 30' up to 46,800 square feet (that's over an acre for the biggest tent alone!), plus 550 tables and over 4500 chairs to set up.

Don't forget about the arena, parking for thousands, electricity, stages, water, bathroom facilities, bleachers, fences, trash cans, signage, etc..!

Tomorrow, this spot will be restored to the original condition in which we found it.

Thank you folks! You have made the impossible, possible, and we appreciate all the effort that went into making it happen!



# SCHEDULE OF EVENTS & MAP

- 7:00 a.m. Early Bird Canoeing from Ft. Niobrara National Wildlife Refuge to Smith Falls Trail Ride  
 8:00 a.m. Rafting or Kayaking from Smith Falls State Park to Brewer Bridge Landing  
 9:30 p.m. Gate Opens at Thatcher Cattle Co. for Trail Boss Ticket Holders  
 10:00 a.m. Trail Boss Reception  
 Art Show Opens  
 General Store Opens  
 11:00 a.m. Trail Boss Brunch  
 12:30 p.m. Gates Open Thatcher Cattle Co. for Top Hand Ticket Holders  
 1:00 p.m. Melodrama by Valentine Players "End of Line", Cowboy Campfire with Vintage Cowboys (cowboy poetry and sing alongs), Sporting Clays, Casino Opens, Silent Auction, Visit Art Show  
 1:30 p.m. Style Show  
 2:00 p.m. Lady Wranglers Performance  
 2:30 p.m. Working Cow Horse Contest  
 Bar Opens  
 3:00 p.m. Melodrama by Valentine Players  
 "End of Line", Take Part in:  
 Cowboy Campfire,  
 Sporting Clays, Casino  
 4:00 p.m. Silent Auction Closes  
 5:00 p.m. Visit Art Show,  
 Melodrama "End of Line"  
 5:30 p.m. Smoked Beef Brisket Supper  
 6:30 p.m. Drawing for Pickup  
 7:00 p.m. Live Auction  
 8:30 p.m. John Conlee Concert  
 9:15 p.m. Break  
 9:30 p.m. Riders In The Sky Concert  
 10:30 p.m. Dance to Mike Nuss &  
 the Country Oak

