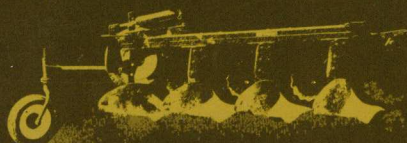


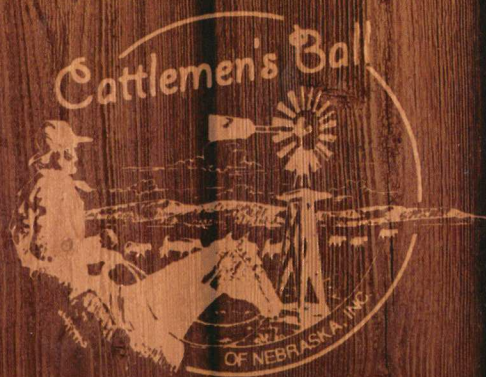
PLOWING CANCER

CATTLEMEN'S BALL *of Nebraska*



UNDER

June 3 & 4, 2011

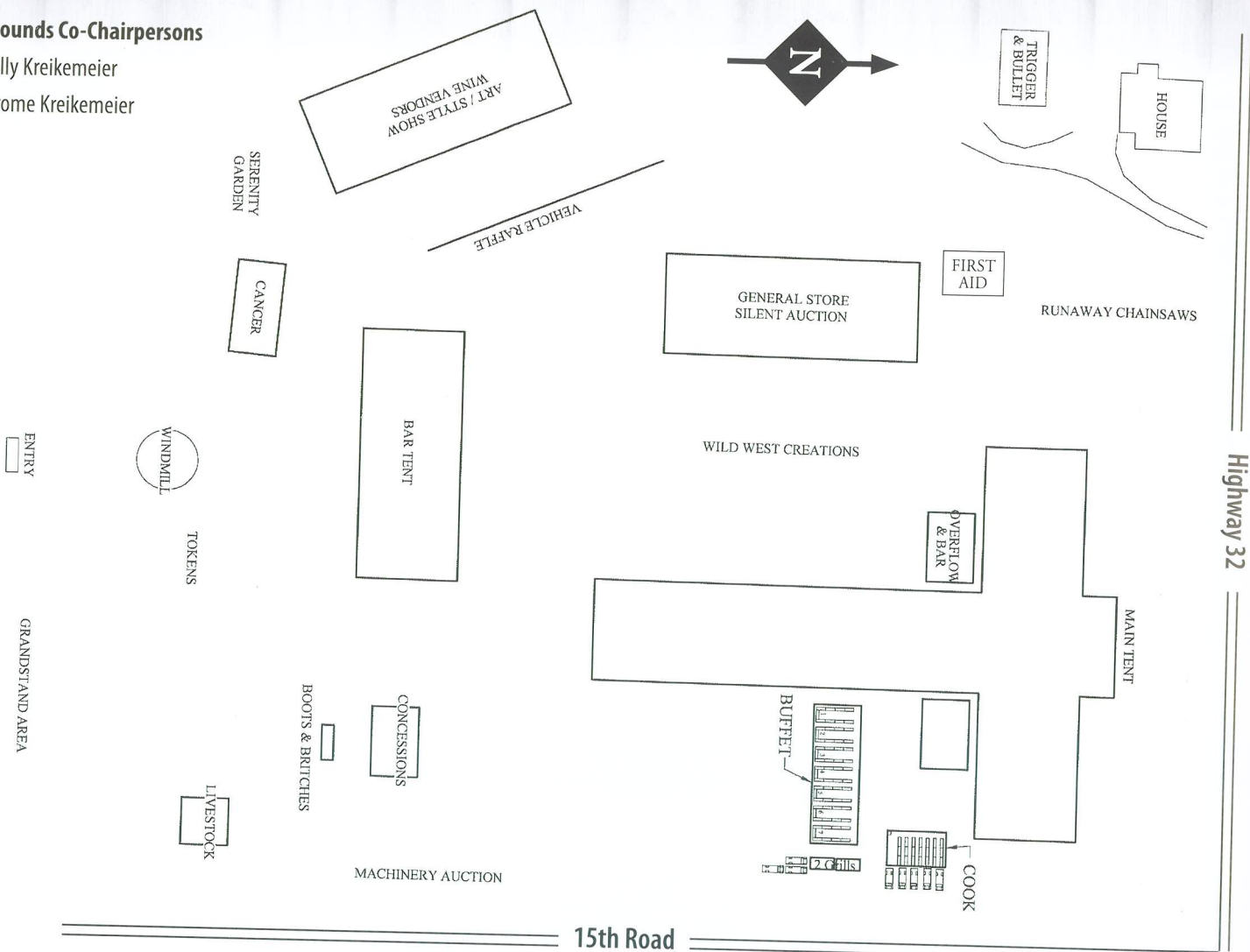


Hosted by Harry & Doris Knobbe Family
West Point, Nebraska

Map

Grounds Co-Chairpersons

Willy Kreikemeier
Jerome Kreikemeier



**For over 50 Years,
Grain States Soya, Inc.**
has provided a market for soybeans
in Northeast Nebraska.

402-372-2429 • West Point, NE 68788

www.soybest.com

Mark Knobbe and Ambrose Hugo are proud to be sponsors
for the 2011 Cattlemen's Ball of Nebraska.

Working together to "Plow Cancer Under"

Table of Contents

2011 Host Family	4	Trail Boss Brunch	24
Advisory Board Welcome	7	Trail Boss Brunch Auction.....	25
General Chairmen Welcome	7	Bar Information	27
2011 Committees.....	8, 9	Wine Tasting.....	27
UNMC Eppley Cancer Center.....	10	Style Show.....	29
General Information	11	Farm, Feedlot & Ranch Auction.....	31
Schedule of Events	12	Centerpiece Sponsors	32
Golf Tournament Information.....	14	Saturday Evening Meal.....	33
Trail Boss Social	14	Raffle Information.....	33
Trail Boss Social Live Auction.....	15	Saturday Live Auction	35
Trail Boss Champagne Reception	16	Entertainment.....	37
Silent Auction	17, 18, 19, 21	Trail Boss Contributors	38, 39, 40
General Store	23	In-Kind Donations.....	40
Concessions.....	23	Cattlemen's Ball 2012.....	43
Art Show	23		



WEST POINT NEWS

(402) 372-2461

Elkhorn Valley SHOPPER

(402) 372-2461

WISNER News-Chronicle

(402) 529-3228

*Where 'Our' focus is on
Cuming County...*

Our towns...

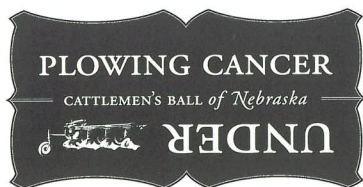
Our schools...

Our children...

It's ALL local!

Welcome

2011 Host Family



Harry and Doris Knobbe and family of West Point are proud to be the Host Family for the 2011 Cattlemen's Ball of Nebraska.

Harry started in 1960 farming and feeding cattle. In 1967 he started Knobbe Livestock Sales and Knobbe Commodities, Inc.

The Knobbe Family has been farming and raising cattle in this area for three generations.

We want to thank everyone who has volunteered by sharing their time and talents to make this year's event a success. We would like to extend a special thank you to each of you who will join us at the Ball uniting together to share friendship and generosity for such a good cause...let's "Plow Cancer Under!"

Chris' spirit and smile will be with us throughout the weekend.

— Pictured below, far right back.



Advisory Board

Welcome from the Advisory Board

Welcome! Today is the 13th Annual Cattlemen's Ball of Nebraska. On behalf of the Cattlemen's Ball Advisory Board, I want to personally extend a warm greeting to this year's event. Over the years, the Cattlemen's Ball of Nebraska has teamed up with Eppley Cancer Center and 13 Host Families and Communities to carry out *our mission of raising funds for cancer research, while promoting beef in a healthy diet and showcasing rural Nebraska*. The sum outcome of each and every Cattlemen's Ball of Nebraska held has resulted in over \$4.4 million to cancer research plus supporting health care in many local communities. Each and every host family, community and guest to a Cattlemen's Ball of Nebraska should be proud that their efforts are yielding results.

The Cattlemen's Ball of Nebraska Advisory Board is delighted to introduce the Harry Knobbe family as the 2011 Cattlemen's Ball of Nebraska hosts. Harry and his family have a long and distinguished history with the cattle industry and a great commitment to giving back to the community. This year, the local chairmen of the Ball are Allen and Cheryl Meister and Gary and Connie Kaup. Your hosts and many wonderful volunteers have worked extremely hard to bring you a fun-filled day while honoring those we have lost to cancer and those who are survivors of this dreaded disease. Their efforts will contribute greatly to cancer research and to this local community health care. We hope to remind everyone of the importance our rural communities and the beef industry is to this great state.

Thank-you to all the donors who have helped make today possible. Take a look around at the decorations, the auction items, the activities, and the food — all made possible by our donors! Thank you again for your generosity and commitment to "Plowing Cancer Under!"

Please enjoy your day with the Knobbe Family and plan to join us next year when Allen and Shelly Clark host the 2012 Cattlemen's Ball of Nebraska near McCool Junction, Nebraska! Thanks for coming and we will see you next year!!

Ivan Rush

Ivan Rush, Chairman
Cattlemen's Ball of Nebraska Advisory Board

Welcome from the Chairmen

Welcome to the 2011 Cattlemen's Ball of Nebraska. We are excited to offer our guests a full day of quality entertainment, great food and numerous activities. We are all here to provide funding for the UNMC Eppley Cancer Center to "Plow Cancer Under."

We graciously thank the Harry and Doris Knobbe family for hosting the Cattlemen's Ball in Cuming County. As residents of Cuming County, we take pride in our role in Nebraska's Cattle Industry and have a proud heritage in this industry.

We would like to thank all of the Committee Chairs and the many volunteers who have worked so hard to make this day possible. Your generosity and work ethic have exceeded our expectations. We are truly blessed to be surrounded by such great people in such a great community.

Please enjoy your day at the Cattlemen's Ball and as our guests in Cuming County.

Allen and Cheryl Meister
Gary and Connie Kaup



Pictured left to right: Allen and Cheryl Meister, Connie and Gary Kaup.

Advisory Board

Chairman

Ivan Rush
-Scottsbluff, Nebraska

Vice-Chairman

Laurie Widdowson
-Lodgepole, Nebraska

Treasurer

Darrel Saltzman
-Shickley, Nebraska

Executive Secretary

Deb Hansen
-Wisner, Nebraska

Advisory Board Members

Lynn Timmerman
-Springfield, Nebraska

Kae Pavlik
-Yutan, Nebraska

Holly Schroeder
-Wisner, Nebraska

Bill Pullen
-Central City, Nebraska

Larry Shavlik
-Bartlett, Nebraska

Alan Svajgr
-Cozad, Nebraska

Barbara Martinson
-Scottsbluff, Nebraska

Dick Miles
-McCool Junction, Nebraska

Ann Marie Bosshamer
-Kearney, Nebraska

Ann K. Bruntz
-Friend, Nebraska

Committees



FRIDAY NIGHT SOCIAL: Mike & Donna Graybeal, Steve Paus, April Pinkerman, Chris & Tiffany Kreikemeier.

CHAMPAGNE RECEPTION: Jim & Joan Yosten, Dr. Scott & Karen Green.



GOLF TOURNAMENT: Kent Weborg, Tim & Michelle Ulrich.

BEEF DISPLAY: Marvin Gentrup.

OUTDOOR DECORATIONS: Bev Wieler, Lorri Friedrichsen, Lois Johnson.

INDOOR DECORATIONS: Marilyn Parr.



AUCTIONEERS: Norm Abrahams, Jim Schaben, Gary Reimers.

LIVE AUCTION: Tom & Helen Feller, Jeff & Lori Scherer.

SILENT AUCTION: George & Jane Mowinkel, Dennis & Janet Broekemeier, Bill & Stasia Stokely.



TRAIL BOSS BRUNCH: Bill & Connie Kreikemeier, Rick & Cindy Sebade, Jay & Kelly Rainforth.



WINE TASTING: Dan & Linda Wortman, Doug & Connie Moritz.

BAR: Fritz Feyerherm, Chad Feyerherm, Bruce & Donna Schlecht.

CONCESSIONS: Dave & Sandy Knobbe, Bruce & Sue Wolff.



HOUSING: Mary Lauritzen.

UNDERWRITERS: Erv Eisenmenger, Dave Wimmer.

VOLUNTEERS: Tina Welding, Bonnie Emanuel.

PRINTING: Tom Kelly, Dorothy Litz.

PUBLICITY: Nikki Hagedorn, Judy Mauch.

Committees



ART SHOW: Alice Heimann, Dana Miserez.

STYLE SHOW: Diane Knobbe, Bonnie Meyer, Deb Schroeder.

GENERAL STORE: Bonnie Ahrens, Kari Ritter, Cindy Ahrens, Linda Chatt.

ACTIVITIES: Nadine Hagedorn, Shellie Wietfeld.



WINDMILLS: Bob Plagge, Dave Baumert, Diane Evert, Ed Kaup, Paul Meyer.



WEBSITE: Tina Gentrup.

FACEBOOK: Jen Kreikemeier.

FIRST AID: Rick Wimer, Greg Horovy, Steve Brune.

CAR RAFFLE: Vaughn & Teresa Beed, Harlyn & Terri VanderGriend.



ELECTRICITY: Jerry Kaup, Ed Kaup.

GROUND: Willy Kreikemeier, Jerome Kreikemeier, Kelly Perchel.

PARKING: Pat Knobbe, Larry & Dianna Kreikemeier.

SECURITY: Lyle Tienken, Matt Parr.



SATURDAY NIGHT ENTERTAINMENT: Jason Smith, Chris Kreikemeier.

SATURDAY EVENING ENTERTAINMENT: Lori & David Loschen, J.D. Race.

EVENING MEAL: Larry Kampschneider, Brian & Lou Reimers, Dan Steffen.



SECRETARY: Mary Jo Lueckenhoff, Diane Evert. **TREASURER:** Kathy Schmaderer.

TICKET TAKERS: Doug & Stacy Kaup, Tom & Shelly Stratman.

TICKETS: Mark Utter, Adeline Hanel.

TOKENS: Connie Paus.

ACCOUNTANTS: Dennis & Linda Michaelis.

Cancer Center



Eppley Cancer Center Tent

Take-home screening kits for colon cancer.

Dermascan machine to assess faces for sun damage.

Graduate students or technicians available to present information on research funded by the Cattlemen's Ball.

Pancreas, breast, and thyroid cancer registries.

Brochures and handouts on cancer screening and prevention.

Three times during the afternoon (see schedule at tent), 'Ask the Physician' presentations.
Three physicians available.

TV videos including the history of the Cattlemen's Ball, research at the Eppley Cancer Center and the NU Foundation capital campaign.

UNMC Eppley Cancer Center

At each Cattlemen's Ball, I look forward to seeing old friends, making new ones, and bringing you news about the groundbreaking research at the UNMC Eppley Cancer Center.

The UNMC Eppley Cancer Center successfully renewed its National Cancer Institute (NCI) designation last year. This review by the NCI takes place every five years and has earned the Eppley Cancer Center NCI designation continuously for over 25 years. A team of scientists from other National Cancer Institute (NCI)-designated cancer centers visited Eppley and commented on the excellent growth in cancer research in the Cancer Center over the past five years and noted that the Cancer Center is on an "extremely positive trajectory."

The Eppley Cancer Center is actively engaged in developing new treatments for cancer patients and has an extensive array of clinical research protocols available to cancer patients across the state. Over the past several years, the Eppley Cancer Center has created affiliations with hospitals in Grand Island, Hastings, Kearney, North Platte and Scottsbluff and provided access to cancer clinical trials to people in those communities. This allows patients across Nebraska to remain close to home, while having access to new anticancer drugs being developed at the Eppley Cancer Center.

Oncologists now know that treating all cancers the same way is a thing of the past. The Eppley Cancer Center is focusing on the use of state-of-the-art technology to analyze every patient's tumor, and using molecular analysis to develop the next generation of cancer therapies for individual patients.

The Eppley Cancer Center is deeply grateful to the people of West Point and the surrounding communities who worked together for many months to make the Cattlemen's Ball happen. A special thank you is extended to this year's hosts, the Doris and Harry Knobbe family, for your commitment to this year's Cattlemen's Ball and your generosity. We also extend our gratitude to the general chairs of this year's Ball, Connie and Gary Kaup and Cheryl and Allen Meister, for your leadership, hard work and innovative ideas. We also thank the committee chairs, committee members, and the hundreds of volunteers for your time and efforts. Finally, on behalf of the faculty, staff and patients of the UNMC Eppley Cancer Center, we thank each of you for attending this year's Cattlemen's Ball. We are so grateful for your ongoing support for this event. With your help, we will 'plow cancer under!' We hope you enjoy the 2011 Cattlemen's Ball, and look forward to seeing you again in 2012!

Best regards,



EPPLEY CANCER CENTER

Kenneth H. Cowan, M.D., Ph.D.
Eppley Professor of Oncology
Director, UNMC Eppley Cancer Center
Director, Eppley Institute for Research in Cancer

*For the health and well-being of all, smoking is not permitted inside the event tents.



**Celebrating 40 Years
in the
Tire Business**

1971 to 2011

661 S Lincoln St. | West Point NE 68788 | **402-372-5572** Office | 402-372-5574 Fax

General Information

Shuttle

Transportation will be available from the parking lot to the event grounds and seating.

First Aid

EMT's will be on site to provide care for any medical situation. The EMT's will be located north of the General Store. In case of an emergency, call 911.

Payment Options

The Cattlemen's Ball will be using tokens for payment unless otherwise marked. Tokens may be purchased at the cashiers table located by the main entrance. Each token is worth \$1.50. Please remember that tokens are non-refundable. Cash, check or credit card will be accepted for purchase at the General Store, Silent Auction and Live Auctions. Payment options may vary with individual vendors.

Auctions & Bidding

Auction items are subject to sales tax. Cash, checks, debit, and credit cards will be acceptable payment for your convenience. Visa, MasterCard, Discover and American Express cards are welcome. Your prompt payment following the auctions is appreciated. All bids are final. No refunds will be made. No exchanges will be made. Anyone who desires to bid will need to register for a bidding number at the Auction Trailer.

Serenity Garden

The 2011 Cattlemen's Ball welcomes you to spend time in the Serenity Garden. This is a quiet place to rest and is provided for remembering those who have fought the war against cancer and continue to fight each and every day against it. Take an opportunity at the garden to add names to the Memory Book. Sign your name of survivorship and sign the names of loved ones in their honor or in their memory.

The Serenity Garden area reminds us of the most important reason we are here — to raise money for cancer research, to honor those that have fought the battle, and to offer hope to those fighting a battle with cancer. Thanks to each of you for your part in "Plowing Cancer Under".

Outdoor Landscaping

Thank you to the following sponsors for their contribution of the outdoor landscaping & design:

Green & Growing Garden Club & Volunteers — West Point, NE

Siffring Landscaping & Garden Center LLC — Fremont, NE

Swanson Landscape Design — West Point, NE

Landscaping In Kind Donations

Bluebird Nursery
-Clarkson, NE

Bomgaars
-West Point, NE

Earl May Garden Center
-Omaha, NE

Gardenland
-Clarkson, NE

Green & Growing Garden Club
-West Point, NE

Perennial Place Landscape & Design
-West Point, NE

Siffring Landscaping
& Garden Center LLC
- Fremont, NE

Joan Steffensmeier
-West Point, NE

Swanson Landscape Design
-West Point, NE

Swanson Nursery
-West Point, NE

TLC Country Floral
-Hooper, NE

West Point Garden Center
-West Point, NE



TIMMERMAN & SONS FEEDING CO., INC.

P.O. Box 367 | 165 South 2nd Street | Springfield, NE 68059

Tel: (402) 253-2218 | Fax: (402) 253-8142

Schedule of Events

Mission Statement

The Cattlemen's Ball of Nebraska, Inc. is established to promote beef in a healthy diet, to showcase rural Nebraska and to raise money for health care research.



Runaway Saws Demonstrations

Friday afternoon and Saturday morning.

Jeff Klatt wood carving to be included in Auction is 5'x5'. Weighs approximately 150 lbs.

The Cattlemen's Ball is partially funded by the Cuming County Visitors Bureau

Announcers:

Orion Samuelson
Max Armstrong
Dwight Lane

Friday, June 3, 2011

- 8:30 a.m. Golf Tournament @ Indian Trails Country Club
- Guest appearances by **Der Viener Schlinger** sponsored by Wimmer's
- 6:00 p.m. Trail Boss Reception and Live Auction @ the Nielsen Center, West Point, NE
- Entertainment by Michael Walker, **The Vintage Vocalist**
- 6:00-8:30 p.m. Art Show Artists - Early Set-up at Ball Site - Art/Style Show Tent
- 6:00-9:00 p.m. Hot Air Balloon Rides by **Euphoria Balloons**

Saturday, June 4, 2011

- 7:30-9:30 a.m. Art Show Artists - Early Set-up continues at Ball Site - Art/Style Show Tent
- 9:00 a.m. Gates Open for Trail Boss Ticket Holders
- Trail Boss Champagne Reception - Bar Tent
- Runaway Saws** Demonstration (Jeff Klatt) - Items to be included in Auction
- Serenity Garden Opens - located by UNMC Tent
- General Store Opens - General Store Tent
- Silent Auction Opens in the General Store Tent
- Concession Stand Opens
- 10:00 a.m. Art Show Opens in the Art/Style Show Tent
- Trigger and Bullet** Display Opens - Photographer provided
- Opening Ceremony - Military Presentation of Colors/The Star Spangled Banner by Patti Knobbe
- 10:30 a.m. Trail Boss Brunch and Auction in Main Tent
- 11:00 a.m. Gates Open for Top Hand Ticket Holders
- 12:00 Noon Three Sessions of "Ask the Physician" - Doctors from UNMC will take and answer questions from the attendees - Times and locations to be announced
- Throughout p.m. Wild West Shoot Out by **Wild West Creations** - Grandstand/Livestock Area
- 12:30 p.m. Arrival of **Obama Impersonator** (Ron Butler)
- 12:50 p.m. Bar Opens
- 1:00 p.m. Livestock Display Opens
- UNMC Eppley Cancer Center Tent Opens - Health Screenings
- Wine Tasting begins in Art/Style Show Tent
- Entertainment by **Angela Rosener** in Art/Style Show Tent
- Boots N Britches** - Country Favorites Cowboys and Indians Performances Begin
- Watercolor Demonstration** by Martha Rhoades begins runs throughout the afternoon in Art/Style Show Tent
- 1:30 p.m. Style Show in Art/Style Show Tent
- Massage Therapy in the Cancer Tent
- Appearances by **Der Viener Schlinger** throughout the afternoon
- Obama Impersonator** (Ron Butler) State of the Ball Address in the Bar Tent
- 2:00 p.m. 2011 Cattlemen's Ball US Postal Commemorative Cancellation Station Begins in Art/Style Show Tent
- Cowboy Poet **R.P. Smith** - Grandstand Area
- 2:15 p.m. Karaoke Contest Registration coordinated by **Awesome Sounds of Pilger, NE** in the Bar Tent
- 2:20 p.m. Karaoke Contest Begins in the Bar Tent
- 2:30 p.m. 1880s **Wild West Creations** Wild West Living History Performance in Art/Style Show Tent
- 2:45 p.m. Farm, Feedlot, and Ranch Auction - Grandstand Area - Reimers Auctioneers
- 3:00 p.m. **White Horse Mounted Patrol** Performance - Grandstand Area
- The Whistler** Garret Bowder at the South Windmill
- 3:15 p.m. Massage Therapy Closes
- 3:30 p.m. Karaoke Contest Winner Announced with Winner Performing
- 3:50 p.m. Wild West Shoot Out by **Wild West Creations** - Grandstand/Livestock Area
- 4:00 p.m. Silent Auction Closes
- Trigger and Bullet Display Closes
- 2011 Cattlemen's Ball US Postal Commemorative Cancellation Station Closes
- 4:15 p.m. **White Horse Mounted Patrol** Performance - Grandstand Area
- 4:30 p.m. **Boots N Britches** - Country Favorites Cowboys and Indians Performances Concludes
- 5:00 p.m. General Store Closes
- Art Show Closes
- Livestock Display Closes
- Wine Tasting Closes
- 5:30 p.m. Serving Lines Open for Dinner in Main Tent
- 6:15 p.m. Karaoke Contest Winners Presentation
- 6:30 p.m. Raffle Drawing
- Live Auction
- 8:00 p.m. **Sara Evans** Concert
- 10:00 p.m. Dance to **Cactus Hill**
- 1:00 a.m. June 5 Bar Closes - *Thank you for coming* - travel safely!
- 8:30 a.m. June 5 **Catholic Mass in Tent by Father Frank of St. Mary's Catholic Church, West Point** (Everyone welcome!) followed by site Clean-Up
- Light Lunch served to Clean-up Volunteers

Friday

8:30 a.m.

Indian Trails Country Club
Beemer, NE

Sponsored by



Omaha, Nebraska

6:00 p.m.

Nielsen Community Center
West Point, NE

Co-Chairmen

Steve Paus, April Pinkerman
-CharterWest National Bank

Chris & Tiffany Kreikemeier
-Nielsen Community Center

Mike & Donna Graybeal
-MD Catering and
Graybeal's Foods

2011 Cattlemen's Golf Tour

Hosted by



Hole Sponsors

Citizens State Bank
First National Bank of Beemer
Farm Credit Services
Wisner Rendering
BKD
Shade All
Feyerherm Farms
Elanco
Bodwell Construction

Dinkel Implement
Bill's Volume Sales
Biegert Feeds
Weborg Feeding Company
Ulrich Cattle
F&M Bank
NVS
VO Enterprises, LLC
Ruskamp Seeds, Inc.

Trail Boss Social

4 Corners of Beef Delight

Station #1

Build Your Own Appetizer. Featuring: Marinated Filet Mignon and Marinated Chuck Tenders with a variety of Breads, Mushroom Sauce, Garlic Mushroom Sauce, 3-Cheese Sauce and Horseradish Sauce.

Station #2

Pepper Steak from Flat Iron Steak prepared Chinese, Mexican and American Style. Stuffed Mushrooms with Homemade Beef Sausage Filling and All the Sides — Peppers, Sweet Onions, Etc.

Station #3

Outdoor Sensation. — Ground Round Sliders, Beef Brisket with Mike's Own BBQ Sauce, Wimmer's Beef Hot Dogs — the Pride of West Point all served with a variety of Buns and all the Fixin's.

Station #4

Wimmer's Sausages, Fruits, Veggies, Cheeses, Shrimp & Dips, Cheesecake Bites and Homemade Truffles. — Spotlighting "Mike's Own Spices" — Come & Get 'Em!

BRUTE CATTLE EQUIPMENT

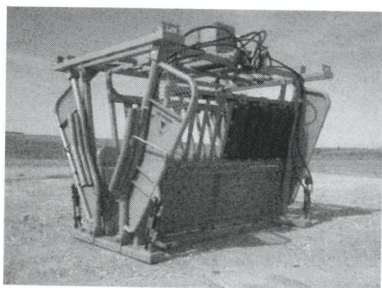


DODGE MANUFACTURING

Missed your chance to participate
in this great cause during the
Cattlemen's Ball Auction?

Mention this offer and 5% of your
Purchase will be sent directly to
Epply Cancer Center to help
"Plow Cancer Under"

"Cattle Friendly ~ Performance Driven"



BRUTE CATTLE EQUIPMENT

Toll Free: 866-441-2555

www.dodgemfg.com sales@dodgemfg.com

Trail Boss Social Live Auction

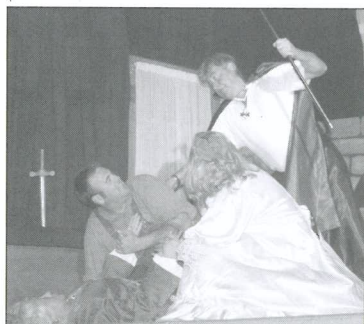
- Lot 1 **Abbott Sandhills Own – Cherry County Beef Bundle**
2 – 13oz. New York Steaks, 2 – 14oz. Ribeye Steaks, 2 – 20oz. T-bone Steaks,
1- 16oz. Top Round Steak, 1- 3.7 lbs. Round Roast, 1- 3.5 lbs. Chuck Roast,
10- 1 lb. packages of Ground Beef. *Donated by Abbott Land & Cattle Co. - Gordon*
- Lot 2 **100 – 30 sec. Radio Ads and a 2 Hour live broadcast on US 92 – Norfolk** from your
location (must be used by 12-31-11). *Donated by US 92 – Norfolk*
- Lot 3 **Hand made quilt** by Sally Ray. *Donated by Sally Ray & David Schnoor - Scribner*
- Lot 4 **5 - Barranda Shirts** (bidders choice, men's or women's).
Donated by Barbara & Gene Graves – Grand Island
- Lot 5 **Golf package for 4** at The Prairie Club near Valentine, two rounds of golf and one
nights lodging in shared double rooms, good on Sunday – Wednesday.
Underwritten by Bodwell Construction – Jim & Rita Bodwell – Pilger
- Lot 6 **Creighton University Basketball Package —**
4 game tickets, 2 rooms at Hilton Omaha, Dinner in Old Market.
*Donated by Gary Witt, Mark Duren, Jeff Snyder,
& Reed Samson (Lutz & Company) – Omaha*
- Lot 7 **Steel Art Sculpture** *Donated by Nucor Steel – Norfolk*
- Lot 8 **Hand made knife by Roger Gaster** in memory of Richard Wieler.
Donated by Mike & Bev Wieler – West Point
- Lot 9 **Chicago Cubs Baseball Dream Day package —** Field Box tickets, pre-game photos
on the field. *Donated by Chicago Cubs & Pete Ricketts*
- Lot 10 **Husker cowboy boots** (Nacona) signed by Larry the Cable Guy.
Donated by Renegade – Norfolk (Troy Weyhrich) and Larry the Cable Guy
- Lot 11 **“On the Hunt” bronze bear sculpture** by Scott Scherer.
Underwritten by Jeff & Lori Scherer – Beemer
- Lot 12 **“Dream Vacation Package”** – Enjoy one full week (seven nights) in spacious
condo-style resort accommodations at destinations worldwide. Airfare, taxes and resort
fee not included. *Donated by Executive Travel – Lincoln*
- Lot 13 **6'x12', 3500#GVW, galvanized trailer** with special design for Cattlemen's Ball.
Includes LED rubber mount lights, treated deck boards, 2" coupler, 4-flat electrical
hookup, jack, & A-frame poly tool box. *Donated by S&W Welding – West Point*
- Lot 14 **Cabela's 50th Anniversary Winchester Model 70 Featherweight Super Grade Rifle**
with special presentation case. One of 500 limited edition.
Donated by Cabela's – Sidney
- Lot 15 **Gravelly “zero-turn” mower**, Model 991083 ZTHD52 with 24 hp Kawasaki engine
and FR V-Turn 52" fabricated 3 spindle deck.
Donated by K&R Equipment – West Point
- Lot 16 **Gold Plated “Back to Back Husker Championships” commemorative**
Winchester .30-.30 rifle with oak presentation case.
Donated by Bob Plagge – West Point
- Lot 17 **Case IH Scout 4x4 utility vehicle** *Donated by Case IH*
- Lot 18 **40' Chicago Air Motor Windmill** with a new head and wheel. This windmill is
located on Main Street of West Point. Harry Knobbe will deliver the windmill to
the purchaser.
- Lot 19 **One hour performance of a one act play** for your own private party or gathering
within 150 miles of West Point. Advance notice required and play selection to be
approved by theatre director. This can be an interactive event.
Donated by Vaughn Beed, Jerry Hugo and the West Point Community Theatre

6:00 p.m.

Nielsen Community Center
West Point, NE

Co-Chairpersons

Jeff & Lori Scherer
Tom & Helen Feller



Saturday

9:00 - 11:00 a.m.

Bar Tent

Co-Chairpersons

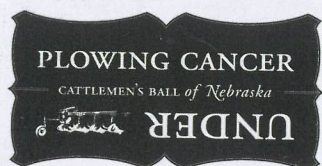
Dr. Scott & Karen Green

Jim & Joan Yosten

Thank you!

**Dave Wimmer
&
Erv Eisenmenger**

Your hard work
as chairmen of the
Underwriting
Committee
are helping
"Plow Cancer Under."



Trail Boss Champagne Reception

Menu

Fresh Fruits
Cheeses
Champagne
Orange Juice
Mimosas
Coffee

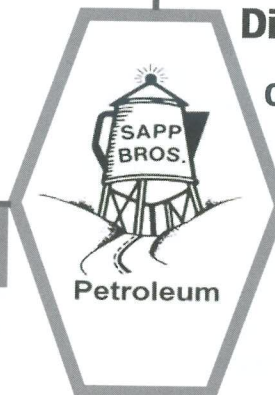
Donors

Dr. Rhett & Julia Eckmann, West Point NE
Hormel Foods, Fremont NE
Dandeli Specialty Cheeses
HyVee, Fremont NE
Roberts Dairy, West Point NE
Johnson Brothers of Nebraska, Omaha NE
Dinklage Medical Clinic/Medical Staff, West Point NE
Lincoln Street Market, West Point NE
Graybeal's Foods, West Point NE

**From start to
finish....You can
count on Sapp Bros.
Petroleum to service
your fuel, lubricant
and propane needs.**



- Diesel Fuels
- Gasoline
- Racing Gas
- Propane



**Soy Oil Available
Bio-Diesel**

Authorized Distributor



**Diesel Exhaust Fluid
Available in Totes,
Drums, 2.5 ga. jugs**

Dispensing Equipment

Call for Competitive Pricing

- Engine Oils
- Hydraulic Oils
- Gear Oils
- Antifreeze
- Cutting Oils
- Synthetics

Mobil

16 Locations serving the Midwest

Omaha
1-800-233-4059
Lincoln
1-888-727-7788
Falls City
1-402-245-2406
Filley
1-800-829-3439

Crete
1-800-307-7244
West Point
1-800-838-1947
York
1-800-400-6917
Columbus
1-866-727-7645

Grand Island
1-800-233-5883
Clarks
1-800-962-6186
Ogallala
1-800-658-4212
North Platte
1-888-754-7801

Sidney
1-800-658-0511
Elgin
1-866-927-3775
Sioux City
1-800-477-2549
Fullerton
1-308-536-2336

www.sappbrospetro.com

Silent Auction

9:00 a.m. - 4:30 p.m.

General Store Tent

Co-Chairpersons

Bill & Stasia Stokely

George & Jayne Mowinkel

Dennis & Janet Broekemeier

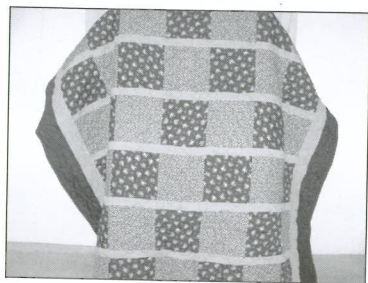
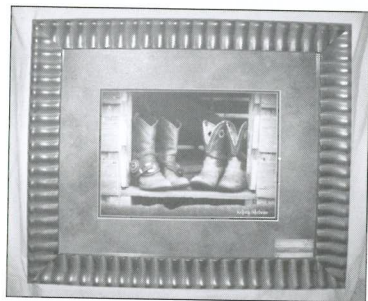
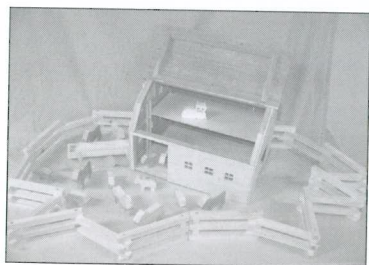
- 101 **18 holes of golf. 4 players. 2 carts.** *Donated by Oakland Golf Club*
- 102 **Basket containing 6 homemade jellies.** Made from locally grown fruit. Dodge Co. and State Fair 1st place winners. Flavors: Choke cherry/currant/black raspberry/elderberry/mulberry/wild grape. *Donated by Mr. & Mrs. Loyd Wegner*
2 gift certificates worth \$20.00 each for fresh in season garden produce. *Donated by Giese Organic Gardens*
- 103 **Charm bracelet** with cancer ribbon charm by Brighton. *Donated by Rachel's Boutique*
- 104 **Ipod with Pink portable Ipod docking station.** *Donated by LeRoy & Mary Timmerman & Alco*
- 105 **2-\$40.00 gift cert. for oil change,** for a passenger car or light truck. Includes: oil, lube, & filter. *Donated by Bliemeister Auto Repair*
- 106 **5-20 ton lots of hay grinding** within 75 mile radius of Wisner. *Donated by G. W. Hay Grinding*
- 107 **Baseball cap autographed by Larry the Cable Guy** w/cooler & beer. *Donated by Larry the Cable Guy*
- 108 **3 custom necklaces. Tabletop jewelry box.** *Donated by Pixie Dots, Silent Auction Committee*
- 109 **2 framed cross pictures with "Family" & "Hope".** *Donated by Ken & Patrice Wuestewald*
- 110 **Great American Grilling Cookbook. \$20.00 gift certificate** for Omaha Steaks purchase. Steak seasoning. *Donated by Omaha Steaks*
- 111 **Brighton breast cancer bracelet & \$20.00 donation to American Cancer Society** in your name. *Donated by Glen & Peggy Evert*
- 112 **One "Feed the Farmer" meal** for 10 people, 100 mile radius of Dodge. Menu: Roast beef/Cheese potatoes/Veg./Salad/dinner roll/choc. cake/12 pkg. pop. *Donated by B & B Bakery*
- 113 **"Cattleman at Sunset" framed print.** *Donated by Mark & Debra Schroeder*
- 114 **Basket Containing**—Simply Salsa Mix/Giddy Up Guacamole Mix/Lovin' Lemon Slush Drink Mix/Hoppin' Jalapeno & Bacon Dip Mix/2 bags of Blue Aztec Chips/Tempting Taco Cheese Ball Mix/Bountiful Beer Bread/Artichoke & Spinach Warm Dip Mix/Vine-Ripened Salsa and a Chip & Dip Tray. *Donated by Tastefully Simple/Megan Broekemeier Retzlaff*
- 115 **Pencil drawing of calves in stalls,** framed & matted. *Donated by Jesse Ahrens*
- 116 **One night at the Lied Lodge & Conference Center at Arbor Day Farm.** *Donated by Lied Lodge & Conference Center at Arbor Day Farm*
- 117 **\$250.00 to be used towards airline tickets or a travel package.** *Donated by Northeast Travel*
- 118 **2-\$25.00 10 inch ice cream cakes.** *Donated by Dairy Queen*
- 119 **Panasonic 42" 1080P Plasma TV** with SD card slot & HD tuner. *Donated by Engelhardt T.V. & Communications*
- 120 **Tote bag with flat iron, hair products, nail products and 2 bottles of wine.** *Donated by Renee's Designer Hairstyles*
- 121 **Epiphone Guitar autographed by Kenny Chesney 2011.** *Donated by Steve Bogdanovich/Romeo Entertainment Group*
- 122 **Framing of 8x10 celebrity photos.** *Donated by Sara Evans & Marr Framing*
- 123 **Southern Star Quilt - 120x120.** *Donated by Mary Dolezal*
- 124 **Double Circle Standing Quilt Rack made of oak.** Holds one quilt. *Donated by Verlyn Furchert*
- 125 **Heart shaped Standing Quilt Rack made of oak.** Holds one quilt. *Donated by Verlyn Furchert*
- 126 **U.S. Flag which flew over U.S. Capital.** *Donated by U.S. Representative Lee Terry*
- 127 **Baby John Deere Bear Quilt 35x42 and vinyl baby bib.** *Donated by Creative Notions*
Teddy Bear Jacket. *Donated by Style Plus*
Teddy Bear Bank and baby silverware. *Donated by Randel Jewelry*
- 128 **Elkay-E-Granite Gourmet top mount kitchen sink.** 33x22 Bisque Bowl depth 9½" Double bowl sink. *Donated by Schuetze Plumbing, Heating & Air*
- 129 **3 certificates valued at \$50.00 each** to go towards any product from our Kodak Kiosk Machines and photo albums. *Donated by Tom's Rexall Drug*
- 130 **Assortment of holiday napkins with plates and accent items.** Napkins are manufactured in Germany. *Donated by Flower & Gift Gallery*
- 131 **\$200.00 worth any salon service** with any stylist in salon. *Donated by ReJuvenation Salon*
- 132 **Shellac Manicure.** 10-14 day manicure shellac system. *Donated by ReJuvenation Salon*



Silent Auction

9:00 a.m. - 4:30 p.m.

General Store Tent

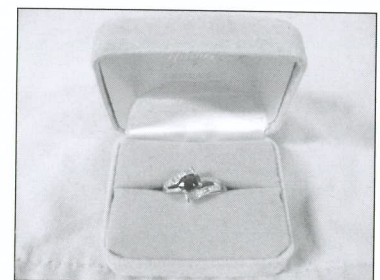
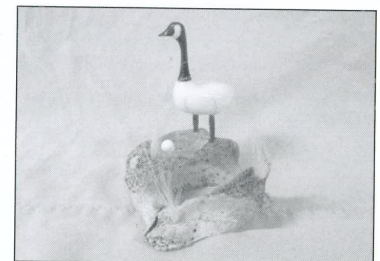
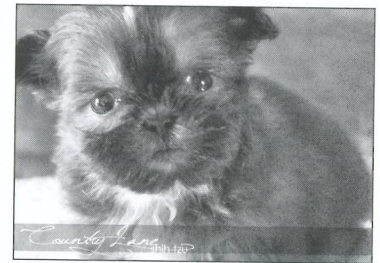


- 133 **Noralash Lash Extensions** top & bottom. Applied by Jeanne Wagner.
Donated by Rejuvenation Salon
- 134 **Tool box & bit set.**
Donated by Yosten True Value
- 135 **Antique painted Pennsylvania blanket chest.**
Donated by LaVern Emil Raabe
- 136 **2 Pizza Ranch certificates for one buffet with drink** per month for a year. *Donated by Pizza Ranch*
- 137 **Bond Gas Grill**, 4 burners, 51,000 BTU, 671 Sq. Ft. cooking surface.
Two 10 lb. tubes of hamburger. *Donated by Bomgaars & Tyson*
- 138 **Windmill oil painting**, 16x20 Framed.
Donated by Marjorie Tramp
- 139 **\$100.00 gift certificate to Absolutely Fresh Seafood.** *Donated by Absolutely Fresh Seafood*
- 140 **Portable electronic muscle stimulator unit.** *Donated by Stover Chiropractic Clinic*
- 141 **Cooler chair filled with grocery items, snacks, Mike's Spices, Chase Vodka, \$50.00 meat gift certificate** (will ship meat if necessary). *Donated by Graybeal's Food*
- 142 **Cooler chair filled with grocery items, snacks, Mike's Spices, Edelweiss wine, & \$50.00 meat gift certificate** (will ship meat if necessary). *Donated by Graybeal's Food*
- 143 **Toy wooden barn with wooden farm animals & 2 wooden fences.** *Donated by Marius Baumert*
- 144 **Shadow box framed red & turquoise beaded necklace with silver medallions.**
Donated by Joyce Wimmer, ASID/The Interior Design Firm
- 145 **Barn wood craft flower planter containing two 8" clay pots with flowering plants.**
Donated by Norval & Sharen Utemark
- 146 **Quarter Horse Wall Clock.** *Donated by Ortmeier's Seed & Feed*
- 147 **\$50.00 for meals.** Dine-in or carry-out. *Donated by Bud's Tap & Grill*
- 148 **6 coupons for 6 inch sandwiches.** *Donated by Subway*
- 149 **\$100.00 Meal Package.** Sandwiches of your choice, potato, salad, pop, & dessert.
Donated by Uptown Restaurant, Richard & Renae Wietfeld
- 150 **3 gallons Manor Hall Pittsburgh Interior Paint** *Donated by Broekemeier Construction Showcase*
- 151 **Four cubic yards of 3000 PSI read mixed concrete.** *Donated by Gerhold Concrete Co.*
- 152 **Framed photo of cowboy boots.** *Donated by Krista Nichols*
- 153 **Gift basket with a variety of Nebraska wines**, and novelty wine accessories including a wine bag, wine glasses, wine glass coasters, corkscrew and napkins. *Donated by Jan & Mary Schuetz*
- 154 **Quilt made by Vernice Luebbert** who loved to sew quilts. Vernice died of pancreatic cancer.
Donated by Mary Voelker
- 155 **18 holes of golf with cart** for 4 players. Box of Tilleist Pro VI golf balls.
Donated by Hi Mark Golf Course
- 156 **Two night stay in Old Waverly Cottage. Two rounds of golf for two people.**
Donated by Old Waverly Golf Club
- 157 **Wooden handcrafted Lazy Susan** with stenciling. *Donated by Lisa Manley/Blessings Unlimited*
- 158 **Three Nebraska wines with Nebraska chocolates.** *Donated by Lincoln Street Market*
- 159 **Dinner for four with Jeff Fortenberry** in Lincoln. *Donated by Jeff Fortenberry*
- 160 **Danko gas grill and tubes of hamburger.** *Donated by Sapp Bros. Petro. & Tyson*
- 161 **Retro silver 4 sided metal Christmas tree** (Can be decorated for any season).
Donated by Brite Ideas Decorating
- 162 **2 - 8 Sessions Punch card for Mary Kay Fenske water workouts. 1 set of Mary Kay water buoys and 1 carry all bag.** *Donated by Mary Kay Fenske*
- 163 **Basket of Hair & Body Care Products.** *Donated by House of Hair, Beside the Point, Guys & Gals, Creative Hairdooz, & Second Glance*
- 164 **July 4th Picnic Package.** Icing tub, oversized beverage jar, serving pieces, skewers, steak thermometers, wine cooler, cloth napkins & towels, & decorative candle holder.
Donated by Jerry & Anita Wiechman
- 165 **"Pinwheels for Sarah" pattern quilt**, 84" x 106" queen size comforter sewn in reproduction 30's fabrics by employees of Franciscan Care Services, West Point, NE. This quilt was made in honor of Mary Brunsing who passed away from cancer. Carol Johnson donated the quilting.
Donated by Franciscan Care Services, Marlene Rolf, Mary Timmerman, Rhonda Ehrisman, Phyllis Heimann, and Mary Clare Stalp
- 166 **1-Johnson 8' Constant flow cattle tank** \$775.00 value.
1-Cushing 6' round cattle tank \$675.00 value. *Donated by Cushing Construction Co.*

Silent Auction

9:00 a.m. - 4:30 p.m.

General Store Tent

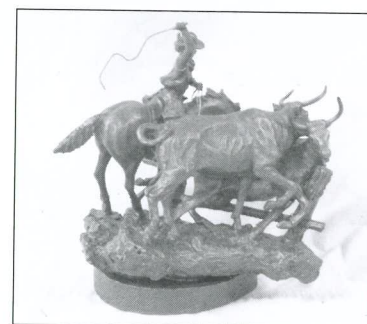
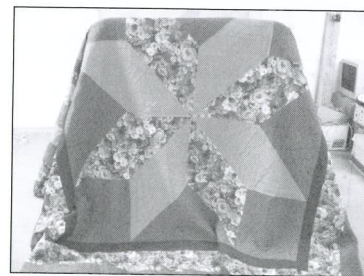


- 167 2-Husker bowling bags. *Donated by Main Street Bowl*
- 168 1-\$50.00 gift card. 1-large single topping pizza gift card. 1 dozen donuts gift card. *Donated by Casey's General Store*
- 169 Shih Tzu puppy purebred with papers. *Donated by Dan & Mary Reeson*
- 170 Goose sculpture from Alaska. *Donated by Roger & Barb Wortman*
- 171 1-Mammogram and reading of one mammogram performed at St. Francis Memorial Hospital. *Donated by St. Francis Memorial Hospital and Dr. Robert Faulk*
- 172 Basket with Cancer Teddy Bear, candle, candy, popcorn & gift certificate. *Donated by Bubbles of Joy*
- 173 3-way woodbase lamp. *Donated by Bracht's Furniture*
- 174 Patio Table. *Donated by Valeria Schlecht*
- 175 Genuine Sapphire & Diamond Ring, 14KT white gold. *Donated by Yarger Diamond Center*
- 176 200 custom full color wedding invitations with white envelopes. *Donated by Quality Printing & Office Supplies*
- 177 Memory Bear. *Donated by Maggie's Memory Bears*
- 178 2 nights at The Raphael Hotel in Kansas City MO including 2 tickets to a Royals baseball game. *Donated by The Raphael Hotel*
- 179 "Dream a Little Dream" Day at the spa package. One hour Swedish massage or European facial. Classic manicure & classic pedicure. #23697 *Donated by Sirens at the Loft*
- 180 Ladies dress cowgirl boots, size 7½. *Donated by Team Lola and Lola's Littles Relay for Life teams/Robert & Nadine Hagedorn*
- 181 Hand made crocheted Christening Gown decorated with pink ribbons (but can put blue ribbons in easily). Can be used for a boy or girl. It took 31.5 hours to make. *Donated by Harvey & Shirley Kreikemeier*
- 182 Rosewood Box Wine Set (corkscrew & bottle stopper). Red camp chair with 2 cup holders. Picnic Cooler with cutting board, knife, corkscrew & 2 bottles of wine. *Donated by Rush's Liquor Store*
- 183 Pebble Beach" men's tan Ultra suede jacket, XXL/TL. *Donated by Roger Wortman*
- 184 Cattlemen's Ball 2011 pre-made scrapbook of the weekend events. 20 premade scrapbook pages — will need to add your own pictures. Will come with instructions or sizes of pictures on mats. *Donated by Scrappin' Point*
- 185 "Lonestar" Quilt, queen size. Dorothy died of cancer in 2009. One of Dorothy's loves was quilting. She pieced this quilt and the Humphrey Quilt Guild did the quilting. *Donated by Dorothy & Clarence Heimann family*
- 186 4 - \$25.00 gift certificates for Pizza Hut *Donated by Pizza Hut/Bill & Lana Wolf*
- 187 Basket containing Sugar Shack soy candle, Sugar Shack Vanilla Freesia candle, Sugar Shack hand & body lotion, Walk Star comfort wrap, Walk Star handcrafted cards, Homemade salsa, Jammin pretzel dip, Cancer dishcloth Angel, jar opener, & curling iron wrap. *Donated by Walk Stars Relay for Life Team*
- 188 Box of wide selection of "Old Style Sausage" dried beef, ham, bacon, summer sausage, and speciaties, fry sausage, jerky, Polish weiners, smokies, beef sticks, Italian sausage, smoked pork chops & Bratwurst. *Donated by Prenzlows*
- 189 Backyard Bandits Throw Quilt, 45"x60". Wildlife Deer Wallhanging, 32"x36" and 4 matching pillows. *Donated by Clarice Kaup*
- 190 \$100.00 towards a stay at Embassy Suites and \$100.00 for a meal at Vivace's Restaurant in Omaha. *Donated by Loren & Harriet Lorenz and Mike & Mary Pospichal*
- 191 Wine cooler. *Donated by Ki Slaymaker and Connie & Roland and B & PJ Silver*
- 192 1 wooden child's bench. 2 in 1 Bag Toss game. *Donated by Toy Corrals by Larry Wittler*
- 193 \$250.00 towards a stay at Embassy Suites and a Henry Doorly Zoo Family Pass. *Donated by Mike & Barb Kirwan*
- 194 nookcolor (reader's tablet). *Donated by Kindschuh Brothers, Inc.*
- 195 Basket of hair care & skin care products. Pedicure certificate & golf tees. *Donated by The Studio, Main Attractions, Lasting Impressions, and Kurl Haven*
- 196 Premier Designs Jewelry Necklace & Earrings, Pewter platter. *Donated by Barb & Merlin Steffensmeier*
- 197 Framed Needlepoint "Northern Lights Wolf" Picture. *Donated by Donna Reppert*
- 198 16x20 double matted photo of a quarter horse. *Donated by Annette Van Buren*

Silent Auction

9:00 a.m. - 4:30 p.m.

General Store Tent



- 199 2 bottles of Homemade Tresnovy Cherry Dessert Wine and 2 jars raspberry jelly.
Donated by Gary L. Faltys
- 200 Bronze Sculpture "God Bless America".
Donated by Fort Western
- 201 Bronze Sculpture "Just Getting Started".
Donated by Fort Western
- 202 Bronze Sculpture "When Open Range Meets Plowed Ground".
Donated by Fort Western
- 203 Bronze Sculpture "When Beef Was Wild".
Donated by Fort Western
- 204 Meat Carving Set, two 10 lb. tubes of hamburger.
Donated by Aloys Transfer
- 205 2 Zero Gravity chairs.
Donated by West Point Saddle Club
- 206 2 tickets for NE vs. Tennessee football game & 2 tickets for NE vs. Ohio State football game.
Donated by Steve Paus
- 207 Grand Keepsake (12x12) or Classic Album (11x14). Five hours personal consultation to create scrapbook.
Donated by Jaco Creations, Staci Jensen
- 208 Unframed photo of Western Nebraska cow-calf branding.
Donated by Ken Reimers
- 209 New Belgium Brewery Bicycle — one of the original bikes, New Belgium "Fat Tire" Neon sign, "Fat Tire" glasses & sweatshirts. Two \$25.00 gift certificates to the "Original" Goldberg's Bar & Grill.
Donated by The "Original" Goldberg's Bar & Grill
- 210 2 wine glasses from the Lolita Collection titled "Pink Ribbon" fighting breast cancer with 2 bottles of wine.
Donated by Carol Mahlberg
- 211 Set of handmade spurs.
Donated by Roger & Hope Gaster
- 212 4 football tickets to the NE vs. Iowa football game Nov. 25th, passes to shoot the DerVeiner Schlinger on the sideline, autographed football.
Donated by Wimmer's Meat Products, Inc.
- 213 Playdate Dresses — These dresses are uniquely designed and hand sewn. These luxury dresses will make play day magical for any 5-7 year old girl.
Donated by Ellen Gross-Rhode
- 214 Cedar wood & old wagon wheel bench.
Donated by John & Anita Starns
- 215 One flowering lilac tree.
Donated by Perennial Place Landscape Design
- 401 Acrylic Painting.
Donated by Marilyn Tenney
- 402 Oil Painting.
Donated by Pamela Hynek
- 403 Wood carving-Black Capped Chickadee.
Donated by Bill Hunke
- 404 Hand made pottery.
Donated by Bonnie Goodrich
- 405 Watercolor Landscape.
Donated by KiTroy Roberts
- 406 Watercolor.
Donated by Martha Rhoades
- 407 Photo — Windmill at Sunset.
Donated by Ina Glabius
- 408 Airbrushed rural mail box.
Donated by Dana Miserez
- 409 Print — Wildlife.
Donated by Jack Vitito
- 410 Photo — "Tophats".
Donated by Jorn Olson
- 411 Watercolor — "Basset Hound".
Donated by Je Neane Dodson
- 412 Print — "Rustic Rural Nebraska".
Rodney Supencheck
- 413 Canvas reproductions — "Cardinals".
Donated by Deb Gengler-Copple
- 414 Feather painting — wildlife.
Donated by Judith Crouch
- 415 Print — "Precious Cargo", (Limited Edition).
Donated by Chana Orton
- 416 Artists Proof — "Masters of the Plains".
Donated by C.J. Brown
- 417 Jewelry — Turquoise & Silver necklace.
Donated by Susan Brown
- 418 Watercolor — "Sleeping Cow".
Donated by Carmen Pieper
- 419 Wall plaque.
Donated by Richard Wagner
- 420 Sculpture — Iron Butterfly.
Donated by Paul Miller
- 421 Acrylic Painting — "Girl from Guatemala".
Donated by Gwen Lindberg
- 422 Oil Painting — Landscape.
Donated by Don Maack
- 423 Watercolor — Floral.
Donated by Cindy Gordman
- 424 Watercolor — Iris.
Donated by Donna Jean Nelson
- 425 Print — Abstract.
Donated by Judy Thomas
- 501-525? Windmills to be sold at Silent Auction.

General Store

Our 2011 General Store will showcase Nebraska vendors. Come and see what our local artisans have crafted — you might decide to take something home!

Premier Designs Jewelry

— Barb Steffensmeier, Dodge

Beads in a Box — Kyla Martin, Kearney

Julene Warren, Bead Chicks — Blair

Mary Engelmeyer Purses — West Point

Creative Notions — Connie Nebuda, West Point

The Wik's End Candle Company

— Denna and Marc Soden, Wisner

Nebraska, Inc. Gift Shop

— Connie Mahaney, Lincoln

The Boot Rack — Norm Reynoldson, Albion

IOP Designs — Linda Oerwich, Pilger

The Rustic Ridge — Tammy Moeller, Norfolk

Scentsy — Zandra Stoltenberg, Norfolk

Yargers Jewelry — West Point

R&L Saddlery — Roger Langenberg, Hoskins

Ranch of BS — Bobby Smith, Ainsworth

Ranch Rebel — Heather Kramer, Hyannis

Holen One Farms

— Mike Holen and Renee Holen, Loomis

The Fort — Lincoln

IHC Farm Toys — West Point

**Cattlemen's Ball Memorabilia and Clothing
Institute of Agriculture and Natural Resources,
Animal Science Dept., and Extension**

Heartland Market — Jackie Linville, Broken Bow

Christian Noble Furs, Ltd.

— Heather Ray, Omaha

Nebraska Beef Council

Nebraska Cattlemen

Jewelry by Sonell

— Sonja Trenary and Ellen White, Arthur

9:00 a.m. - 5:00 p.m.

General Store Tent

Co-Chairpersons

Bonnie Ahrens

Kari Ritter



9:00 a.m. - 5:00 p.m.

Concessions Tent

Co-Chairpersons

Bruce & Sue Wolff

Dave & Sandy Knobbe

Concessions

Menu (Tokens only. Sorry, no cash)

Grilled Burgers 2 Tokens

Hot Dogs..... 2 Tokens

Nacho Chips 'N Cheese..... 2 Tokens

Popcorn 1 Token

Candy..... 1 Token

Cookies (2) 1 Token

Pop - 12 oz. Cans 1 Token

Pepsi, Diet Pepsi, Mt. Dew, Diet Dew,

Orange, Root Beer, Lemonade, Sierra Mist

Bottled Water 1 Token

Coffee 1 Token

Milk 1 Token

Thank you to the following Donors:

Arvid's Food Town

Bill's Food Mart

West Point Subway

Nelson's Food Pride

Bomgaars Supply

Rotella's Italian Bakery

Bar K Cattle, LLC

Costco

Roberts Dairy

Aloys Transfer Inc.

Bluejay Booster Club

Ulrich Cattle, Inc.

Fremont Wal-Mart Supercenter

Wimmer's Meat Products

Colfax-Dodge County Corn Growers

Golden Harvest — Mark Harstick

2nd Street Market

Art Show

Connie & Roland Bentjen — Albion, NE

C.J. Brown — Lindenwood, IL

Susan Brown — Bellevue, NE

Deb Gengler-Copple — Hubbard, NE

Judith Crouch — Omaha, NE

JeNeane Dodson — Lincoln, NE

Ina Glaubius — Wisner, NE

Bonnie Goodrich — Oakland, NE

Bill Hunke — West Point, NE

Pamela Hynek — Fremont, NE

Gwen Lindberg — West Point, NE

Loren Lorenz — Meadow Grove, NE

Don Maack — West Point, NE

Paul Miller — Lincoln, NE

Dana Miserez — West Point, NE

Jorn Olsen — Hastings, NE

Chana Orton — Mills, NE

Mike & Mary Pospichal — Atkinson, NE

Carmen Pieper — Howells, NE

Martha Rhoades — Des Moines, IA

Kim Roberts — Lyons, NE

Ki Slaymaker — Atkinson, NE

Rodney Supencheck — Columbus, NE

Marilyn Tenney — Lyons, NE

Jack Vitito — South Sioux City, NE

Richard Wagner — Omaha, NE

Larry Wittler — Norfolk, NE

Brush Strokes Art Club — West Point, NE

10:00 a.m. - 5:00 p.m.

Art/Style Show Tent

Co-Chairpersons

Dana Miserez

Alice Heimann

Thank you to the following Entities:

Franciscan Care Services — West Point, NE

Nebraska Loess Hills, Resource Conservation & Development Council — Oakland, NE

West Point Community Arts Council — West Point, NE

West Point Brush Strokes Art Club — West Point, NE

Saturday

11:00 a.m.

Main Tent

Co-Chairpersons

Bill & Connie Kreikemeier

Rick & Cindy Sebade

Jay & Kelly Rainforth

Trail Boss Brunch

Menu

Fresh Fruit Medley | Beef Tenderloin, seasoned and fire grilled, with red wine mushroom gravy |
Green Beans Almandine, with butter and seasoning | Roasted Red Potatoes with rosemary |
Fresh Baked Rolls with Butter | Dessert: Cheesecake drizzled with chocolate sauce and fresh raspberry |
Beverages: Iced Water, Iced Tea, Coffee

Featuring Nebraska Wines: Carriage House Red - Silver Hills Winery | Serenade - Miletta Vista Winery



Proud Supporter of the Cattlemen's Ball
Proud provider of the Ford and Lincoln raffle vehicles



...Serving Nebraska Since 1938

Good Housekeeping Magazine Award winner • Time Magazine Dealer of the Year
13-time winner of Ford's President's Award for Customer Satisfaction

2445 North Broad Street • Fremont, Nebraska 68025
402-721-1471 • 800-422-2050 • diersford.com

All Bars *(Tokens only. Sorry, no cash)*

Pop - 16 oz. Glass 1 Token
Red Bull 3 Tokens

Mixed Drinks

Super Call 3 Tokens
Premium 4 Tokens
Make it a Bomb 1 Token

Water 1 Token
Beer 2 Tokens

Wine

By the Glass 3 Tokens

1:00 p.m.

Bar Tent

Co-Chairpersons

Fritz Feyerherm
Chad Feyerherm
Bruce & Donna Schlecht

Wine Tasting *(Tokens only. Sorry, no cash)*

Get your pair of 2011 Cattlemen's Ball Collector wine glasses when you attend!

Pair of Glasses and 10 Sample Tickets 13 Tokens



Hosted by:

Mac's Creek Vineyards - Lexington, NE • James Arthur Vineyards - Raymond, NE
Cuthills Vineyards - Pierce, NE • Silver Hills Vineyards - Tekamah, NE • Miletta Vista Winery - St. Paul, NE

1:00 - 5:00 p.m.

Art/Style Show Tent

Co-Chairpersons

Doug & Connie Moritz
Dan & Linda Wortman

THE NEBRASKA WAY

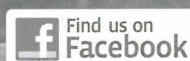
FARMING IS PART SCIENCE
AND PART LETTING NATURE
DO ITS THING.



ROY DINSDALE
FOUNDER, PINNACLE BANK

What does it take to be a success in agriculture? The latest technology. Working from dawn until dusk. And a little patience to get you through the seasons. My family learned those lessons over 120 years of running feedlots and farms. Whether you need the latest equipment, your annual loan or just a bank you can trust, you'll find a partner you can rely on at any of our branches.

Visit pinnbank.com



Pinnacle Bank

THE WAY BANKING SHOULD BE

Style Show

Who needs Fashion Week in New York?! The Cattlemen's Ball of Nebraska Runway is where sophisticated style will meet cowboy culture. This exciting show will have fashions for everyone! All vendors and designers hail from Nebraska. Special guests, celebrities, and cancer survivors will create some fresh excitement on the stage. Many of our models for the show are cancer survivors, bringing special meaning to this unique event. From casual to formal, this is a show you do not want to miss. Many of the selections from the show will be for sale in the style show tent the day of the event.

Clothing and Accessories

Barbara Jean's - Columbus
Christian Nobel Furs - Regency, Omaha
The Fort Western Outfitters - Lincoln
Randel Jewelry - West Point
Schmitt's Clothing - West Point
Style Plus - West Point
Swans Apparel - Wayne
Yarger Diamond Center - West Point

Princess Dresses made by Ellen Gross-Rhode

University of Nebraska - Lincoln Design Student Runway Projects

under the direction of Dr. Barbara Trout

Celebrity Models

Becky Grimm, Miss Nebraska Rodeo
Karalyn Hoefer, Mrs. Nebraska
Hannah Feller, Countess of Aksarben
JD Alexander,

National Cattlemen's President
Lydia Brasch, Senator
Ron Briggs, Administrator,
St. Francis Memorial Hospital
Marlene Johnson, Mayor
Dr. Renae Meyer, CO
St. Francis Memorial Hospital

Host Family Daughter-In-Law:

Patti Knobbe

Host Family Granddaughters:

Drew, Jenny and Maddie Knobbe
Hanna, Kate and Allie Knobbe
Elizabeth and Amanda Loschen

Emcee

Jessica Cihacek
KCAU Channel 9 TV, Sioux City, IA

Hair

Creative Hairdooz, Teresa Neesen
Lasting Impressions, Deb Harstick
Shear Inspirations, Sarah Rolf

Makeup

MARY KAY®

Connie Wimmer Director and
Unit Consultants

Music

KTIC 107.9 the Bull



Models Lunch

Wimmer Food Products, Inc.



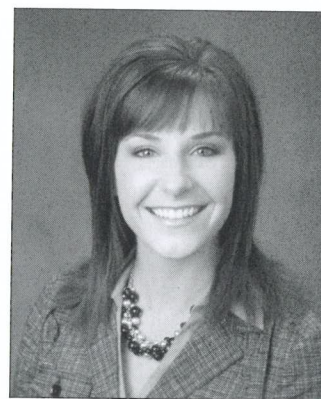
West Point Dairy Women

1:30 p.m.

Art/Style Show Tent

Co-Chairpersons

Diane Knobbe
Bonnie Meyer



Jessica Cihacek

Entertainment ~ Angie Rosener

Music has always been a part of Angie Rosener's life. Raised on a farm outside of Ute, IA, Angie grew up in a musical family—taking piano lessons from her Mom and singing in a bluegrass band with her sister. She went on to major in music education at Wayne State College in Wayne, NE and is currently in her 10th year of teaching K-8th grade vocal and instrumental music at Schleswig Community School in Schleswig, IA. She and her husband John are the proud parents of three daughters: Ashley (5), Sara (3), and Jenna (1) years old.



Angie Rosener

Farm, Feedlot, and Ranch Auction

- Lot 1 **Two \$1,000 gift certificates towards Pioneer Products**
Ruskamp Seed and Pioneer Hybrid - Beemer
- Lot 2 **One load of #2 Corn**
JR & Pam Breitreutz - Wisner
- Lot 3 **One Syrup Pump – installed**
Stan Ortmeier Construction - Beemer
- Lot 4 **(2) 22' Fence-all Panels (Standard)** *Erv Eisenmenger & West Point Implement & Design*
- Lot 5 **30 days use of a John Deere payloader**
Murphy Tractor - Sioux City
- Lot 6 **Four loads of Golden Synergy Feed ADM (100T)**
CC Ag, LLC - Wisner
- Lot 7 **Yearling Bull Calf (dob:1-09-10) 1/2 blood Simmental, out of angus cross cow (main anjou) Sire: FELT NEXT BIG THING 54T, 81# birth wt, 710# weaning wt, 1300# yearling wt**
Gentrup Showcattle - Gerald Gentrup
- Lot 8 **\$2000 worth of horizontal boring in Northeast, NE**
Brent Wisnieski/dba S&W Underground & Marcel Sudbeck
- Lot 9 **20' Silage Box (no hoist)**
Smeal Manufacturing Company - Snyder
- Lot 10 **Three goose neck hitches with installation**
Blue Ox - Pender
- Lot 11 **30 days use of 740 Hyundai wheel-loader**
Rueters - Council Bluffs
- Lot 12 **One Semi Load (28T) modified wet distillers grain within 75 miles of Norfolk**
Louis Dreyfus
- Lot 13 **Boz-Blo Bunk Cleaner**
Settje Services and Boz-Weld - Wisner
- Lot 14 **(2) 44' Fence-all Panels (Standard)** *Erv Eisenmenger & West Point Implement & Design*
- Lot 15 **Brute 360 heavy duty hydraulic squeeze chute**
Dodge Manufacturing Co. - Brute Cattle Equipment
- Lot 17 **30 days Use of Payloader**
NMC (Nebraska Machinery Company)
- Lot 18 **30 days Use of Skidloader**
NMC (Nebraska Machinery Company)
- Lot 19 **Registered Maine-Anjou Heifer: "Dug's CB Princess", Sire: "Copyright", Dam: "Double bred Meyer 734 Angus Cross", Birthdate: February 4th, 2010, Selling open, halter broke & ready to breed**
Doug Brand, Brand's Maines - Seward & Naber Farms - Utica
- Lot 20 **Tire mat for head gates, loading chutes and other feedlot use** *Randy Dunn - Pender*
- Lot 21 **1 Months use of WA250 Komatsu wheel loader** *Roadbuilders Machinery & Supply Co.*
- Lot 22 **Cattlemen's Ball of Nebraska special edition Country Welding box scraper w/tilt axles option**
Bill Cohee & Chuck Liermann-Country Welding - Wisner

3:00 p.m.

Grand Stand Area

Co-Chairpersons

Jeff & Lori Scherer

Tom & Helen Feller

Auctioneers

Jim Schaben

Jon Schaben

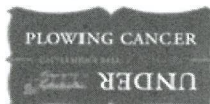
Reimers Auction



Country Welding & Repair

- * Aluminum * Welding Supplies * On the Farm Repair * Machine Shop
* PTO Repair * Feed Wagon Parts and Repair

East Highway 275, Wisner, NE Phone (402) 529-3501



Evenings Phone

402-528-3430 or 402-528-7246



Centerpiece Sponsors

- Mike & Patty Knobbe - West Point, NE
In memory of Sister Laura Patterson
- Lois Lubker - Lyons, NE *In memory of Rod Lubker*
- Donna Loschen - York, NE *In memory of Mary Ann Gutshall*
- Connie & Doug Moritz - West Point, NE
In honor of Kelly Perchel
- Mike & Bev Wieler - West Point, NE
In honor of Kari Sue Ritter
- Mr. & Mrs. Lendon Thompson - Elsie, NE
In memory of Lylal McCaig
- Gary & Connie Kaup - West Point, NE
In memory of Helen Jurgenson
- Northeast Nebraska Humane Society - Norfolk, NE
In memory of Mrs. Hope Grimm
- Charles "Jake" Weber - Wisner, NE *In memory of Shirley Weber*
- Charles "Jake" Weber - Wisner, NE *In memory of Carol Flynn*
- Richard, Sue, Kaylyn, Allison, Trista Waller
In memory of T.J. Waller
- Lowell & Mardell Weitzenkamp - Fremont, NE
In honor of Mary Weitzenkamp Harper
- O'hana Studio - West Point, NE
Past, Present and Promise Petal Sponsor
- Mark & Pam Spurgin - Ogallala, NE
In memory of Joan Spurgin and Jack Roberts
- Daun Adams - Waterloo, NE *In memory of Bill & Alice Reeson*
- Karen Kreikemeier - Snyder, NE *In memory of Leona Hagedorn*
- Don Wietfeld Family - West Point, NE
In memory of Pauline Wietfeld
- Dick & Ann Miles - McCool Junction, NE
In honor of Dick Miles
and in memory of Bette Bedford and Eroll Miles
- John & Laurie Widdowson - Lodgepole, NE
In memory of Mullen John Widdowson
- Ardie Smith - West Point, NE *In memory of Bob Smith*
- Mary & Bob Engelmeyer - West Point, NE
In memory of LeRoy Miserez
- Tony & Dotty Batenhorst - West Point, NE
In honor of Tonya Hans
- Dan & Jane Stratmann - West Point, NE
In memory of Margaret Ortmeier
- Megan Leonard - Omaha, NE *In memory of Leah Leonard*
- Megan Leonard - Omaha, NE *In memory of Mike Gans*
- Bob & Sandy Stieren - West Point, NE
In memory of Delores Pagels and Francis Stieren
- Tom & Shelly Stratman - West Point, NE
In memory of Ed, Jerry & Jeff Stratman
- Angie Klitz - West Point, NE *In honor of Rhonda Peterson*
- Kiera Hastings - Doniphan, NE *In memory of Vivian Hastings,*
Marie F. Kuchner, Bernice E. Sullivan
In honor of Kiera Sullivan, Karen Sullivan
- Pat & Stephanie Knobbe - West Point, NE
In memory of Steve Smith
- LeRoy & Marilyn Parr and Family - Hooper, NE
In memory of Clarence H. Parr
- Jane Niewohner - Elgin, NE
In memory of Angie (Rolf) Liekhus
- Jane Niewohner - Elgin, NE *In memory of Dale Liekhus*
- Erv & Elaine Eisenmenger - West Point, NE
Past, Present and Promise Petal Sponsor
- Cheryl & Al Meister - West Point, NE
In memory of William Meister
- Cheryl & Al Meister - West Point, NE
In memory of Virginia Meister
- Harry & Doris Knobbe - West Point, NE
In honor of family members of Harry & Doris Knobbe
- Harry & Doris Knobbe - West Point, NE
In memory of family members of Harry & Doris Knobbe
- Bob & Nadine Hagedorn - West Point, NE
In honor of Kelly Hagedorn
- Bob & Nadine Hagedorn - West Point, NE
In honor of Lola Lea Persson
- Al & Joann Svajgr - Cozad, NE
In memory of Judy Svajgr and Jerry Braun
- Mark & Denise Wieman - Howells, NE
In memory of Ivan Herbolsheimer
- Kathy Schmaderer - West Point, NE
In memory of Viola Knobbe
- Glen & Sue Knobbe - Imperial, NE
In memory of Emma Lower
- Linda L. Perry - Norman, OK *In memory of Helen Jurgenson*
- Doug & Joy Stratman - West Point, NE
In memory of Ed, Jerry & Jeff Stratman
- Family of Joyce Kreikemeier - West Point, NE
In memory of our Mother
- Theresa Perry - West Point, NE *In memory of Dean Perry*
- Mary K. Means *In memory of Gary Means*
- Delores M. Wimmer - West Point, NE
In memory of Harold Wimmer and Stephen Wimmer
- Connie & John Bliemeister - West Point, NE
In memory of Delores Pagels
- Cindy, Britney, Tyler, Amanda, Kali Stratman - West Point, NE
In memory of Jeff Stratman
- Connie Kreikemeier - Snyder, NE
In memory of Dick Wiemann and Vera Wiemann
- Floyd Erickson - Plano, TX *In memory of Carol Erickson*
- Connie & Doug, Marilyn & LeRoy and Lynelle & Lloyd - West Point, NE
In memory of James Ritzdorf
- Connie & Doug, Marilyn & LeRoy and Lynelle & Lloyd - West Point, NE
In memory of Leonard Ritzdorf
- Connie & Doug, Marilyn & LeRoy and Lynelle & Lloyd - West Point, NE
In memory of Virgil Buerman
- Cheryl & Dave Knievel - West Point, NE
In memory of Wilhelmina Evert
- William Zobel Inc. - West Point, NE *In memory of Erma Zobel*
- Ambrose & Nora Hugo - West Point, NE
In honor of Ambrose & Nora Hugo
- Diane Peitzmeier - Norfolk, NE
In memory of Helen Peitzmeier, Dean Wessel, Urban Wessel

Evening Meal

Menu

Spring Baby Greens Salad with Raspberry Vinaigrette & Crumpled Gorgonzola Cheese
8 oz. Smoked Strip Loin, Choice grade, with Horseradish Sauce and Au Jus
Roasted Carrots
Dinner Rolls with Butter
Choice of Iced Water, Iced Tea or Coffee
Garlic Mashed Potatoes
Decadent Chocolate Cake

IMPORTED FROM DETROIT
STRAIGHT TO FREMONT

NEW 2011 CHRYSLER 200



GENE STEFFY

CHRYSLER • JEEP • DODGE • RAM

YOU CAN COUNT ON US!

- NEW CAR SALES
- QUALITY PRE-OWNED
- 5-STAR SERVICE
- COMMERCIAL SALES
- COMMERCIAL SERVICE

2545 East 23rd, Fremont
800-642-7033
genesteffy.com



DODGE

CHRYSLER

Jeep

Chrysler, Jeep, Dodge and Ram are registered trademarks of Chrysler Group LLC.

5:30 p.m.

Main Tent

Co-Chairpersons

Larry Kampschneider
Dan Steffen
Lou Reimers

Evening Meal
proudly catered by:



Raffle Co-Chairpersons

Vaughn & Teresa Beed
Harlyn & Terri VanderGriend

RAFFLE DRAWING

Sat., June 4th • 7:00 pm

Win your choice of a
**Chevrolet, Dodge
or Ford Pickup***

*or a vehicle of similar value

Donated by:

Norfolk GM Auto Center, Norfolk

**Gene Steffy's
Chrysler Jeep Dodge, Fremont**

Diers Ford, Fremont

Also Sponsored by:
**West Point Chevrolet,
West Point**

—Winner does not have to be present to win—

To Benefit the UNMC/Eppley Cancer Center
and area communities

Winning ticket holder must notify the Raffle Ticket Committee no later than June 17, 2011. Contact Vaughn Beed at 402.380.8231. There is no cash buyout. Winner is responsible for taxes and licensing, plus arranging delivery of vehicle. A U.S. Government 1099 form will be provided.

Cattlemen's Ball of Nebraska, Inc.
State ID# 35-007793405

Saturday Live Auction

Live Auction

6:30 p.m.

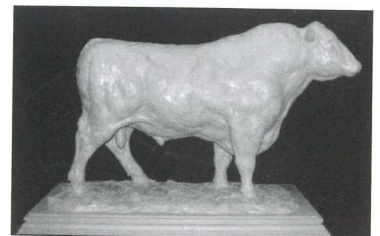
Main Tent

Co-Chairpersons

Jeff & Lori Sherer

Tom & Helen Feller

- 1 **"BEEF...It's What's for Dinner!!"** — Dinner for 8 people with Governor Dave Heineman and First Lady Sally Ganem at the Governor's residence
Governor Dave Heineman
- 2 **"Cattle Country Adventure"** — Experience the western hospitality of Valentine, Nebraska and it's diverse region of quiet lakes, grassy sand hills, secluded waterfalls, big ranches, real cowboys and one of the ten best canoeing rivers in the US. Includes 1 room for 2 nights at Niobrara Lodge, half day canoe trip for 4 including shuttle from Little Outlaw Canoe & Kayak and a \$100 gift certificate to Jordan's Fine Dining
Valentine Chamber of Commerce, Niobrara Lodge, Little Outlaw Canoe & Kayak and Jordan's Fine Dining
- 3 **"Colors of a Cowboy" bronze sculpture** by Herb Mignery
Herb & Sherry Mignery
- 4 **Vacation for two to ARUBA**
LG Seeds, David Camp, RBD and Jay Kreikemeier
- 5 **Big Green Egg with custom red cedar table**
Dirk & Jan Peterson - Norfolk, Smok'n Buddies - Norfolk, & Don Stolz - Norfolk
- 6 **Universal Children's Playhouse**, fun-filled to last a lifetime, floors built of 2x4 construction and 3.5 batt filled insulation. The roof is built of 2x6 const. and has 3.5 batt insulation and 2" airflow above them. Playhouse comes with 2 battery powered lights and chandelier
Paradise Playhomes Greg Rasmussen - Wisner
Underwritten Bosselman Travel Plaza & Great Plains Communications
- 7 **"A Night in the Big O"** — A night on the town for 2 with lodging at Embassy Suites in La Vista, Dinner at Flemings Fine Dining, transportation to and from dinner by Old Market Limo and flowers by Voila Flowers & Gifts
Greater Omaha Chamber/David G. Brown, Pres & CEO
- 8 **Two tickets in President Milliken's skybox** at a home game of your choice during the **2011 Husker football season**, including parking pass and two invitations to a pre-game tailgate party hosted by President Milliken
James B. Milliken, President, University of Nebraska
- 9 **Weekend sand hills deer hunt on the historic and majestic Abbott Ranch**
Abbott Land & Cattle Co.
- 10 **Golf package for 4 at The Prairie Club near Valentine**, two rounds of golf and one night's lodging in shared double rooms, good on Sunday - Wednesday
Underwritten by Bodwell Construction - Pilger, Jim & Rita Bodwell
- 11 **"Husker Legacy" bronze sculpture** by Fred Hoppe of Columbus, Nebraska
Underwritten by Fred Hoppe
- 12 **"The Orphan" bronze sculpture** by Fred Hoppe of Columbus, Nebraska
Underwritten by Cattlemen's Ball of Nebraska
- 13 **Model TR22 T SpreadAll manure spreader** with 8" lower distributor bar
Erv Eisenmenger & West Point Implement & Design, Inc.
- 14 **ROTO-MIX Feed Wagon**, can be traded for other model
Bill Pullen and Bill's Volume Sales
- 15 **Model HSXHD-22T, High speed, extra heavy duty, trailer mounted commercial manure spreader.** High Speed, Extra Heavy Duty, Trailer Mounted. Specifications: 22 ft. 3 Beater with Kick Out, Heavy Duty Slop Gate, Plastic Floor and Side Liners, Cab protector Headboard
MMI International and Iron Wagon Sales
- 16 **Circle Y's 100 years of John Wayne Anniversary Saddle** including saddle rack, rawhide lariat, John Wayne cardboard cutout and DVD.
Fort Outfitters - Lincoln
- 17 **"On Eagles Wings" — handmade quilt** in memory of Mary Brunsing made from Mary's fabric scraps
Mary Brunsing Quilt Group
- 18 **"Mr. Smith Goes to Washington"** — Enjoy three days and two memorable nights in our Nation's Capital. Package includes a private tour of the Library of Congress. Enjoy a round of golf for (3 players) at magnificent Congressional Country Club, host of the 2011 US Open Golf Tournament. Accommodations for 4 (2 rooms, 2 nights) provided by the 4-star Hotel Sofitel, just two blocks from the White House across Lafayette Square, a beautiful nighttime stroll. Package also includes a \$1200 travel voucher for flights on your preferred airline. You'll do DC like you've never done it before! In addition, Senator Mike Johanns will welcome the group and arrange a photo and tour of the Capital.
Congressman Lee Terry, The Durham Museum, Brad & Amy Knuth, Great Plains Communications, and Smith — Hayes Financial Services
- 19 **40' Chicago Air Motor Windmill** with a reconditioned head. This windmill is located at the corner of Hwy 32 & Road 15 or in the NE corner of the Ball site. Harry Knobbe and Erv Eisenmenger will deliver the windmill to the purchaser.
Erv Eisenmenger
- 20 **"Herd Sire" — bronze sculpture** by Scott Scherer of Rapid City, South Dakota
Underwritten Wilson Trailer Company - Sioux City, Iowa



Michael Walker

Michael Walker is Omaha's own 'Vintage Vocalist'. Close your eyes and you might believe you've entered a time machine back to the heyday of Sinatra, Tony Bennet, or Nat King Cole.

Sara Evans

If people are surprised to hear that Evans is back, it's because it didn't seem as though she'd ever gone away. She continued to tour and maintain close contact with her active fan base. She became an author, signing a three-book deal with Thomas Nelson Publishers, which has already published two of her novels — *The Sweet By and By* and *Softly and Tenderly*. She released a greatest hits collection that included four new tunes, and she's continually remained a favorite at country radio thanks to such hits as "Born to Fly," "Suds in the Bucket," "I Keep Looking," "Perfect," "No Place That Far" and "A Real Fine Place to Start."

Away from the spotlight, much has happened to Evans since her last studio record. She weathered a high profile divorce, yet focused on her three children, took time to heal and found love again with football-star-turned-sportscaster Jay Barker. They married, and Evans moved from Nashville to Birmingham, AL, devoting the last few years to happily focusing on home and their blended family of seven children. "I cannot believe it's been six years," she says of her self-imposed hiatus. "In so many ways, I feel like I'm just beginning. I really and truly do. I feel like I'm just starting my life, my career, and there's nothing that I can't do. I'm definitely more confident now than I've ever been in my life."

That confidence informs the album's lead single, "A Little Bit Stronger," a portrait of a survivor that carries an empowering message. The song has quickly become one of the most successful singles in Evans' career, approaching the half-million digital sales mark even before the release of her album. "A Little Bit Stronger" is definitely something that I can relate to, and everyone else can, too," Evans says of the song, penned by Hillary Lindsey, Luke Laird and Hillary Scott. "Time really does heal everything. You come out on the other side, and you always are stronger from it."

Stronger is just the latest jewel in an already stellar career. The New Franklin, MO, native has come a long way from singing with her family's band as a child. She has garnered numerous accolades including the Academy of Country Music's Top Female Vocalist honor in 2006 and the Country Music Association's Video of the Year prize for "Born to Fly." She's been named one of *PEOPLE* magazine's "50 Most Beautiful People." Her previous studio albums have been strong sellers. Her sophomore set, *No Place That Far*, has been certified Gold; 2001's *Born to Fly* is double-Platinum and 2003's *Restless* and 2005's *Real Fine Place* are both Platinum.

Dance to Cactus Hill

Cactus Hill was voted as the #1 Country Group in the Midwest by Lincoln radio station 96 KZKX.

The Hill has played aside Nashville notables such as Lonestar, Brad Paisley, Rascal Flatts, Montgomery Gentry, Gary Allan, Phil Vassar, Joe Nichols, Chris Ledoux, Mark Wills, Darryl Worley and Blake Shelton...just to name a few.

6:00 p.m. - Friday

Nielsen Center

8:00 p.m. - Saturday

Main Tent

Co-Chairpersons

Lori & David Loschen



Sara Evans

10:00 p.m. - Saturday

Bar Tent

Co-Chairpersons

Jason Smith — JD Race



**KAUP SEED
& FERTILIZER INC.**

Complete Agronomy Specialists

5 Certified Crop Advisors

- Fertilizer ▪ Seed ▪ Herbicides
- Profit Zone GPS Farming
- Nutrient Management Planning

1101 S. Beemer St.,
West Point, NE 68788

402-372-5588

Trail Boss

Diamond Trail Boss - \$25,000

Cargill Corn Milling – Sweet Bran - Blair
 Cornhusker International Trucks
 Omaha
 Norfolk
 North Platte
 Lincoln
 Sioux City
 (Saturday Evening Co-Sponsor / Entertainment)
 F&M Bank – West Point
 Harry & Doris Knobbe & Family - West Point
 Valmont Industries - Valley & West Point

Platinum Trail Boss - \$10,000 – \$24,000

Cedar Hill Cattle Co. – Bill & Joe Sindelar - Howells
 Central Railroad Co. (Rio Grande Pacific Corp.) –
 Fort Worth TX
 Citizens State Bank - Wisner & West Point
 D & S Tire Inc. - West Point
 First Community Bank - Beemer, Bancroft and
 Homer
 Grain States Soya Inc. - West Point
 Greater Omaha Packing Co. Foundation - Omaha
 Kaup Seed & Fertilizer - West Point
 Nebraska Beef - Omaha
 Nucor Corporation - Norfolk
 Pinnacle Bank - Lincoln
 Sapp Bros. - West Point
 Timmerman Feeding Corporation - Springfield
 Tyson Fresh Meats - Dakota Dunes SD
 Werner Enterprises Inc. - Omaha

Golden Trail Boss - \$5,000 - \$10,000

Herb Albers Feedlot Inc.
 Herb & Kathy Albers - Wisner
 Auston Crop Insurance and Farm Management –
 Milford
 Bank of the West - Omaha
 Bar T Cattle Co. - Walthill
 Bills Volume Sales - Central City
 Breikreutz Ag Inc.
 J.R. & Pam, Doug & Linda - Wisner
 CharterWest National Bank - West Point
 City of West Point
 Diers Ford - Fremont
 Gene Steffy Dodge Jeep - Fremont
 JBS / Swift – Greeley CO
 KBRX – O'Neill
 Kreikemeier Farms
 Bill & Keith Kreikemeier - Snyder
 Chuck Leonard Cattle Co. - Springfield
 Midwest Bank - Pierce
 Norfolk Iron & Metal - Norfolk
 Performance Plus Liquids - Palmer
 Scribner Grain & Lumber Co. - Scribner
 Sebade Feed Yard & Trucking
 Brent & Rick Sebade - Emerson
 Seed Enterprises Inc. - West Point
 Union Pacific Railroad - Omaha
 University of Nebraska Foundation - Lincoln
 Wells Fargo Bank - West Point
 West Point Community Foundation - West Point
 West Point Custom Feeders - West Point
 Wilson Trailer Co. - Sioux City IA
 Wimmer's Meat Products Inc. - West Point
 Wisner West Inc. - Wisner

Sapphire - \$3,000 - \$5,000

Affiliated Foods Midwest - Norfolk
 Bodwell Construction - Pilger
 Farm Credit Services - Norfolk
 Norfolk GM Auto Center - Norfolk
 Jeff & Lori Scherer - Beemer

Silver Trail Boss - \$2,000 - \$3,000

Duane & Phyllis Acklie - Lincoln
 Agri Labs - Omaha
 J.D. & Deb Alexander - Wisner
 Aloys Transfer Inc. - Bruce & Sue Wolff - West Point
 Auten, Pruss & Beckmann - Norfolk
 Beckenhauer Construction Inc. - Norfolk
 Cary & Barb Becker - Omaha
 Bellar Feedlots Inc. - West Point
 BKD, LLP - Lincoln
 Cuming County Feeders
 Darr Feedlot Inc. - Cozad
 Farmers State Bank - Dodge
 Franciscan Care Services - West Point
 Alvin Glasshoff - Gretna
 Hensel Farms Inc. - West Point
 Holland Feedlot Inc. - Wisner
 INSURO Insurance - Rick Wimer - West Point
 Ed & Lynette Kaup - West Point
 Gary & Connie Kaup - West Point
 Chris & Melissa Knobbe - West Point
 Ron & Nancy Kvals - Wisner
 Lindsay Corporation - Lindsay
 Rod Lutt Trucking Inc. - Wayne
 Allen & Cheryl Meister - West Point
 Monsanto Co. - St Louis MO
 Morrison Enterprises - Hastings
 MS Construction - West Point
 Nebraska Farm Bureau - Lincoln
 Joe & Ann Prinz Feedlot - West Point
 Ritter Feedyards LLC - Beemer
 Kenny & April Rocker - Omaha
 John Roth and Son Inc. - Omaha
 T-L Irrigation - Hastings
 Ulrich Cattle Inc. - West Point

Bronze Trail Boss - \$500 - \$2,000

Brand Fluid Power Inc. - Omaha
 Cash-Wa Distributing Co. - Kearney
 Dinklage Feed Yard Inc. - Sidney
 M.H. Feldman - Omaha
 Hi-Gain Feedlot - Cozad
 J & L Livestock Co. LLC - Pebble Beach, CA
 Meiergerd Feed Yards - West Point
 Randy Owens Custom Chopping - Carroll
 Ruskamp Feed Yards – Gary & Mary,
 Doug & Kristie - Dodge
 Silverstone Group - Omaha
 West Point Chevrolet - West Point
 Wisner Lions Club - Wisner
 West Point Dairy Products, LLC - West Point

Trail Boss Ticket Buyers

A.C. Feedyards Inc.
 Affiliated Foods Midwest
 AgriLabs / Ardell & Carol Friesen
 AgriLabs / Cary & Barb Becker
 Al & JoAnn Svajgr
 Alan D & Kristie M Borgelt

Albion Livestock Market LLC
 Alison Reigle
 Allen & Cheryl Meister
 Allan McClure
 Alltech / Justin Jelsma
 Alvin Glasshoff
 Anderson & Sons Inc.
 Andrew Meister
 Andrew Peitzmeier
 Andy & Trisha Liakos
 Ann Marie Bosshamer
 Ardath Smeal
 Austin Crop Insurance & Farm Management
 Auten Pruss & Beckmann
 Bank of the West
 Bar T Cattle Co.
 Barbara Martinson
 Beckenhauer Construction Inc.
 Bellar Feedlot Inc.
 Bernie Manley
 Betty Lind
 Bill & Jan Rochford
 Bill Wenke
 Bills Volume Sales
 BKD LLP
 Bob & Nancy Beckman
 Bob Engelmeyer Feedlot Inc.
 Bob & Mary Engelmeyer
 Bob Maxwell
 Bodwell Construction
 Bozweld-Dan Bossow / Settje Ag Engineering
 BPI Technology
 Brain & Lou Reimers
 Breikreutz Ag Inc.
 Jr. & Pam Doug & Linda Breikreutz
 Brian & Karalyn Hoefer
 Brush Creek Ranch / Lon W Keim MD
 Bryan & Nancy Knobbe
 Burns Feedlot LLC / Leon & Joel Bruns
 Cargill Inc.
 Carl Mahlberg
 Catherine Hervert
 Cattlemen's Express / Gail & Joleen Anderson
 CC Ag LLC
 Cedar Hill Cattle Inc. / Bill & Joe Sindelar
 Central Plains Milling
 Charles Dummer
 Charles Markley
 Charlie Molvig & Coni Dowd-Molvig
 CharterWest National Bank
 Chris & Dorothy Mejstrick
 Chris & Kim Brockmann
 Chris & Melissa Knobbe
 Chuck Hassebrook / Randy Ferlic
 Chuck Leonard Cattle Co.
 Cindy Buxton / Hillcrest Photography
 Circle E Land & Cattle LLC
 Craig, Jeffrey & Brian Ebberson
 Citizens State Bank/ Wisner & West Point
 City of West Point
 Clarence Wieberg
 Clem & Mildred Knobbe
 Corinne Kidder
 Cornhusker International Trucks Inc.
 Craig & Wendy Wooldrik
 CTC Farms
 Cuming County Feeders
 Dan Steffen
 Daniel Kreikemeier
 Daniel Wortman
 Darlene & Jim Strehle

Trail Boss

Darr Feedlot, Inc.
 Darroll Loschen
 Dave Baumert
 Dave Ortmeier Feedyards / Dave & Aggie Ortmeier
 David McCracken
 Deb Hansen
 Dennis & Janis Connealy
 Dennis & Kathy Utter
 Diamond 6 Feeders
 Diana Evens
 Diane Briggs
 Dick & Leona Graybeal
 Dick Beck/ Three Trees Ranch
 Dickinson Farms Inc.
 Diers Ford
 Dinkel Implement Co.
 Dirk Petersen
 Don Meiergerd
 Don Peterson & Associates / Fremont Office
 Don Wietfeld & Sons
 Don Witte
 Donald & Marilyn Deitemeyer
 Dori Olson
 Doug & Joy Stratman
 Doug Brand
 Dr. Brain & Julie Hass
 Dr. Ken Cowan
 Dr. Robert H Sueper
 Duane & Phyllis Acklie
 Duane Lemke
 Duane Muller
 Duhsman Feedyards
 Eagle Ridge Feedyards
 Edwin Kaup
 Eileen & Marvin Gentrup
 Elaine Dinslage
 Elanco-Tim Ulrich
 Elkhorn Valley Cattlemen Assoc.
 Engelhardt TV & Comm. Inc.
 Ervin Wooldrik
 F&M Bank
 Farm Credit Services / West Point NE
 Farmers State Bank
 Feyerherm Cattle Co.
 First Community Bank
 Floyd Erickson
 Folken Feedyards / Chuck Folken
 Frank & Shirley Sibert
 Fred Meyer
 Gail & Joleen Anderson
 Gary & Connie Reimers
 Gary & Lowene Hasemann
 Gary Godbersen
 Gary Jurgenson
 Gary Kaup
 Gene Steffy Dodge Jeep
 Gerald Stengel
 Grain States Soya Inc.
 Greater Omaha Packing Co. Foundation
 Greg & Sharon Linder
 Harry Beck
 Harry Knobbe Feedyards
 Harvey Hunke
 Hensel Farms Inc.
 Herb Albers Feedlots Inc./Herb & Kathy Albers
 Holland Feedlot Inc.
 Illa Stalp
 INSPRO / Rick Wimer
 Intervet Schering Plough
 Ivan & Doris Rush
 J&S Feedlot

Jack Ferrin
 James Fehring
 Jan Batenhorst
 Jane Gloor
 Jay Rainforth
 JBS/Swift
 JD & Deb Alexander
 JD Griffith
 Jean & Gary Schulzkump
 Jean & Patrick Meiergerd
 Jeanette Marx
 Jeff & Lori Scherer
 Jeff Jackson
 Jerome Kaup
 Jim & Stacy Linder
 Jimmy & Becky Craig
 Joe Carara
 Joe Prinz Feedlot
 John & Laurie Widdowson
 John Borgelt
 John Bromm
 John Fredrickson
 John Knobbe
 John Roth & Son Inc.
 Jon & Marian Davenport
 Jordan Feller
 Judy Feller
 K&R Equipment
 Kae Pavlik
 Kaup Seed & Fertilizer
 Kaup's Financial Advisors
 Keith & Jodi Kreikemeier
 Keith Swarts
 Keith Thomsen
 Kelly & Virginia Holthus
 Kenneth & Mary Ellen Kreikemeier
 Kent Weborg
 Kevin Coen
 Kreikemeier Farms
 Kurt & Jerene Kruse
 Larry & Nancy Shavlik
 Larry C & Diana Kreikemeier
 Larry Kampschneider
 Larry Shepard (Don Peterson & Assoc.)
 & Linda Shepard (The Real West)
 Leah & Travis Hays
 Lee D. Seeman
 Lextron Animal Health
 Lincoln Street Market
 Linda Flyr
 Linda Wiese
 Lips Printing Service
 Louis Luebbert
 Lowell Weitzenkamp
 Loyd Wegner
 Lutz & Company Accountants & Consultants
 Lyle Tienken
 Marlynn & Virgil Hunke
 Marjorie Alexander
 Mark Koch
 Marshall Land Brokers & Auctioneers
 Mary A. Horton
 Mary Jo Lueckenhoff
 Mary Long / Dimmler Enterprises
 Mary Meister
 Matt Ulrich / Dodge Mfg.
 Mattson, Ricketts Law Firm / Steve Mossman
 Max Armstrong & Orion Samuelson
 Meiergerd Feedyards
 Meyer Agri-Services
 Michelle & Dr. Tom Cohee

Michelle Wordekemper
 Midwest Bank N.A.
 Midwest Laboratories Inc.
 Mike Johanns
 Mike Kelly Farm / Mike & Debra Kelly
 Mike Tomes
 Miles Cattle Co. / Dick & Ann Miles
 Milford & Lois Heller
 MMI International Iron Wagon Sales
 Morrison Enterprises
 MS Construction
 Nadine Hagedorn
 Nancy & Larry Shavlik
 Nancy Mathews
 Nebraska Beef
 Nebraska Farm Bureau
 Nebraska Land & Cattle Agency Inc.
 Niewohner Cattle Partnership
 Nina Clow
 Noble Land & Cattle Inc.
 Norris & Lori A Marshall
 Northeast Travel
 Ott Livestock LLC / Gene, Steven, Adam Ott
 Owen Knobbe
 Pat Ellis
 Paul & Mary Claire Stalp
 Paul Meyer
 Paul Timmerman
 Performance Plus Liquids
 Pete & Suzan Kruce
 Pinnacle Bank
 Platte River Radio
 Platte Valley Veterinary Hospital / Dr. Matt Sullivan
 Prime Stop
 Pruss Excavation Co.
 Randy & Lori Oertwich
 Randy & LuAnn Ortmeier
 Randy Owens Custom Chopping
 Ray & Sharon Bennett
 Ray Welsh
 Reigle Farms
 RFD TV
 Richard & Marilyn Knobbe
 Richard & Sue Waller
 Richard Brouillette
 Ridgeline Farms Inc.
 Ritter Feedyards LLC
 Robert & Beverly Spieck
 Robert & Karen Plagge
 Robert Moodie
 Robert Moseman
 Rod Lutt Trucking Inc.
 Ron & Nancy Kvols
 Ron Brinkman
 Ronald Karlin
 Roth FeedLot Inc. / Greta Roth
 Rural Radio Network
 Russell & Theresa Fullner
 Russell Engelmeyer Cattle Co Inc.
 S&B Cattle Co.
 S&W Welding
 Saltzman Inc.
 Sapp Bros
 Sara Hough
 Sargent Irrigation Inc.
 Scott Clausen
 Scott Doering
 Scott Knobbe
 Scott Muller
 Scribner Bank
 Scribner Grain & Lumber Company

Trail Boss

Sebade Feedyard & Trucking /Rick & Brent Sebade
Seed Enterprises
Sharon Brandes
Shovel Dot Ranch
Smith Feedlot
Snyder Malone Coffman Inc.
Spurgin Inc.
Stan Ortmeier Co.
Steffensmeier Insurance Agency
Steve Meister
Steve Weiler
Sullivan & Sullivan Feeding Inc. / Mark Sullivan
Tara Shavlik
Terri Uden
The Pinnacle Agency
The Solutions Group Inc.
Thomas Sullivan
Tim Hunke Farms

Tim Schroeder
Timmerman Feeding Corporation
Tom & Shelly Stratman
Tom Engelmeyer Cattle Co.
Tom Feller
Tom Hastings
Tom's Rexall Drug
Tyson Fresh Meats
Ulrich Cattle Co.
Underwood Farms Inc. / Paul Underwood
Union Pacific Railroad
University of Nebraska Foundation
US Bank
Valeria Schlecht
Valmont Industries Inc
Vaughn & Teresa Beed
Vern Ortmeier
Vollmer Feedyards LLC

Wagonhammer Cattle Co. / James & Susan Wolf
Walco International Inc.
Walter & JoAnn Mejschik
Ward Laboratories Inc.
Weber Feedyards LLC (Joel & Bob Weber)
Weborg Feeding Co. LLC
Wells Fargo
West Point Chamber of Commerce
West Point Custom Feeders
West Point Livestock Auction Inc.
West Point News
Willard Harstick
Wimmer's Meat Products
Wisner Rendering
Wisner West Inc.
Wm. L. Cohee

In-Kind Donations

DIAMOND — (\$25,000 & Above)

Bill's Volume Sales - Central City
Intervet Schering Plough
Revalor Cattle Implants - O'Neill
MMI International and Iron Wagon Sales - Holdrege
RFD TV - Omaha
Rural Radio Network - West Point, Lexington,
Scottsbluff
West Point Implement & Design Inc. - West Point

PLATINUM — (\$15,000 - \$24,000)

Platte River Radio - Kearney

GOLDEN — (\$10,000 - \$14,000)

CC Ag, LLC / Dave Deitloff - Wisner
Country Welding & Repair - Wisner
Dodge Mfg. - Dodge
Lips Printing Service - Kearney
Herb & Sherry Mignery - Loveland CO
West Point News - West Point

SILVER — (\$5,000 - \$10,000)

Abbott Ranch - Gordon
Case IH - West Point
Christian Noble Furs, Ltd. - Omaha
Fort Outfitters - Lincoln
Fred Hoppe - Columbus
K & R Equipment Inc. - West Point
LG Seeds / Jay Kreikemeier - West Point
Merial Inc. - Chuck Baum - Denton
Murphy Tractor - Sioux City IA
Nebraska Machinery Co. - Omaha
O'hana Studio - West Point
Rueters - Council Bluffs IA
Settje Services & Bozweld Ag - Wisner
Smeal Manufacturing Co. - Snyder

BRONZE — (\$2,500 - \$5,000)

B & B Video Productions - West Point
Donald & Marilyn Deitemeyer - Doniphan
The Durham Museum - Omaha
Gentrup Showcattle / Gerald Gentrup - Beemer
Governor Dave Heineman
& First Lady Sally Ganem - Lincoln

Great Plains Communications - Blair
Terry Hughes Tree Service - Springfield
Senator Mike Johanns - Washington D.C., Lincoln
Kaup Electric - West Point
Brad & Amy Knuth - Omaha
James B. Milliken, President UNL - Lincoln
Nebraska Machinery / CAT - Norfolk
Sila's Garbage Service - West Point
Stan Ortmeier & Co. - Beemer
Paradise Playhomes / Greg Rasmussen - Wisner
Bob Plagge - West Point
River City Recycling (Scott, Joan & Del Hughbanks) - Omaha
Roadbuilders Machinery & Supply Co. - Omaha
Jeff & Lori Scherer - Beemer
Smith Hayes Financial Services - Omaha, Lincoln
Congressman Lee Terry - Omaha
Tradewell (Norm, Arlene, Mike & Kathy Tassler) - Gretna & Ashland
US 92 & 94 Rock - Norfolk
West Point Design - West Point
West Point Implement & Design Inc. - West Point
Don Wiefeld & Sons Inc. - West Point



Proud Sponsors of the 2011 Cattlemen's Ball

201 Main Street • PO Box 100
Beemer, NE 68716
Ph 402-528-3223

109 John Street • PO Box 369
Homer, NE 68030
Ph 402-698-2381

221 Main Street • PO Box 99
Bancroft, NE 68004
Ph 402-648-3341

MEMBER FDIC

www.firstbeemer.com

